

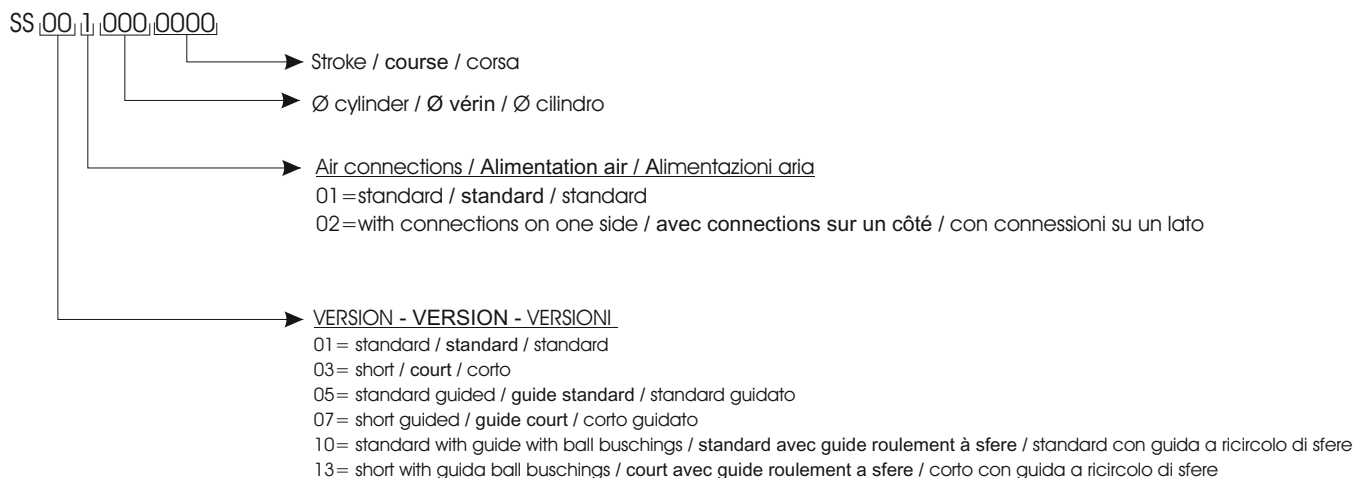


Air Work's rodless cylinders are born from the requirement to reduce dimensions while granting the same stroke dimension. They are available in several versions and the bores vary from 25 to 63mm. Main feature of this cylinder is the exceptional toughness of the guide while the sealing system guarantees a long life of the cylinder also in presence of high temperature and speed.

Le vérin sans tige AIRWORK est utilisé pour des besoins de grandes courses et de faibles dimensions. Il existe dans différentes versions et les diamètres vont du diamètre 25 au diamètre 63mm. Ses caractéristiques principales résident dans la robustesse de son piston par rapport à la charge déplacée et dans son déplacement rapide même en présence de température élevée.

Il cilindro senza stelo nasce dall'esigenza di ridurre gli ingombri a parità di corsa. È fornito in diverse versioni e gli alesaggi variano da 25 a 63mm. I pregi principali di questo cilindro sono l'eccezionale robustezza del pistone/carrello e il sistema di tenuta garantisce una lunga vita del cilindro anche in presenza di temperature e velocità elevate.

ORDERING CODE / CODIFICATION / CHIAVE DI CODIFICA



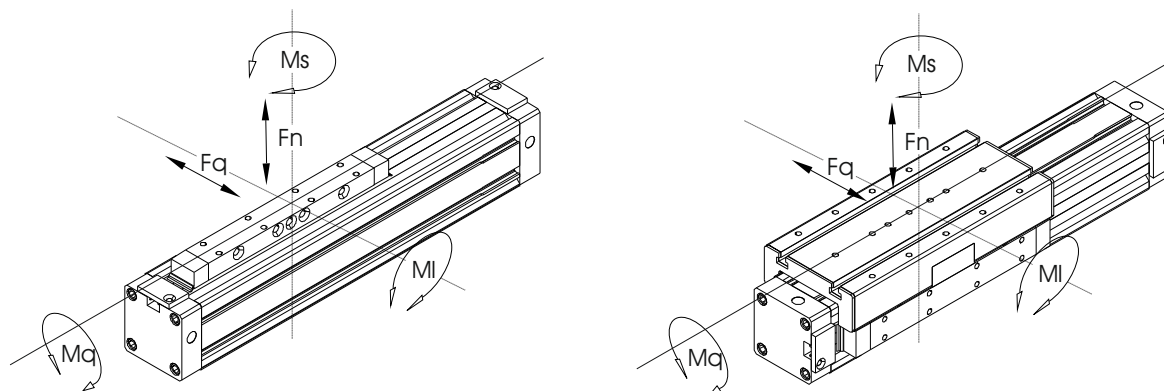
TECHNICAL DATA / DONNÉES TECHNIQUES / DATI TECNICI

Fluid / Fluide / Fluido	Lubricated or non lubricated air / Air avec ou sans lubrification / Aria con o senza lubrificazione				
Operating temperature range / Température d'utilisation / Temperatura di esercizio	-10C° / +70C°				
Max operating pressure / Pression max d'utilisation / Pressione massima di esercizio	1 - 8 bar				
Maximum speed / Vitesse limite / Velocità massima	2.0 m/sec				
Maximum stroke / Course limite / Corsa massima	6000mm				
Cushioning length mm / Amortissement / Corsa ammortizzo /	Ø25:24mm	Ø32:28mm	Ø40:36mm	Ø50:45mm	Ø63:59mm
mass at 0mm / Poids a 0mm / Peso a 0 mm	Ø25:0,88kg	Ø32:1,40kg	Ø40:2,41kg	Ø50:5,30kg	Ø63:8,10kg
Poids + 100mm / additional mass 100mm / Peso aggiuntivo 100 mm	Ø25:0,30kg	Ø32:0,39kg	Ø40:0,52kg	Ø50:0,96kg	Ø63:1,32kg

COMPONENTS / COMPOSANTS / COMPONENTI

Caps / Nez et fonds / Testate	Anodized aluminium / Aluminium anodise / Alluminio anodizzato
Profile / Profile / Profilo	Anodized aluminium / Aluminium anodise / Alluminio anodizzato
Piston / Piston / Pistone	Acetal / Resine acetale / Resina acetica
Piston seals / Joints piston / Guarnizioni pistone	Polyurethane / PU / Poliuretano
Sealing strip / Bande interne / Bandella di tenuta	Polyurethane / PU / Poliuretano
Cover strip / Bande externe / Bandella di copertura	Stainless steel / Acier inox / Acciaio inossidabile
Screws of fixing / Vis de fixations / Viti di fissaggio	Stainless steel / Acier inox / Acciaio inossidabile

MAXIMUM FORCE AND TORQUE / MAXIMUM FORCE ET TORQUE / FORZA E TORSIONE MASSIMA



TYPE	Ø	operating force	Fn max	Fq max	Ml max	Mq max	Ms max
SS01125	25	255 N	270 N	-	13 Nm	2.5 Nm	11 Nm
SS03125	25	255 N	270 N	-	8 Nm	2.0 Nm	7 Nm
SS05125	25	250 N	580 N	580 N	23 Nm	10.0 Nm	23 Nm
SS07125	25	250 N	340 N	340 N	9 Nm	5.0 Nm	9 Nm
SS10125	25	250 N	850 N	1300 N	65 Nm	35 Nm	105 Nm
SS13125	25	250 N	850 N	1300 N	29 Nm	35 Nm	64 Nm
SS01132	32	420 N	300 N	-	30 Nm	3.0 Nm	24 Nm
SS03132	32	420 N	300 N	-	15 Nm	3.0 Nm	12 Nm
SS05132	32	410 N	850 N	850 N	33 Nm	15.0 Nm	33 Nm
SS07132	32	410 N	460 N	460 N	14 Nm	6.5 Nm	14 Nm
SS10132	32	410 N	900 N	1500 N	79 Nm	40.0 Nm	125 Nm
SS13132	32	410 N	900 N	1500 N	36 Nm	40.0 Nm	76 Nm
SS01140	40	655 N	650 N	-	60 Nm	4.0 Nm	54 Nm
SS03140	40	655 N	650 N	-	30 Nm	4.0 Nm	27 Nm
SS05140	40	640 N	1120 N	1120 N	60 Nm	25.0 Nm	60 Nm
SS07140	40	640 N	600 N	600 N	25 Nm	11.0 Nm	25 Nm
SS10140	40	640 N	1200 N	2000 N	190 Nm	67.0 Nm	118 Nm
SS13140	40	640 N	1200 N	2000 N	85 Nm	67.0 Nm	72 Nm
SS01150	50	1000 N	800 N	-	80 Nm	17.0 Nm	74 Nm
SS03150	50	1000 N	800 N	-	38 Nm	17.0 Nm	32 Nm
SS05150	50	1000 N	1550 N	1500 N	200 Nm	70.0 Nm	200 Nm
SS07150	50	1000 N	820 N	800 N	60 Nm	40.0 Nm	60 Nm
SS10150	50	1000 N	4100 N	2000 N	157 Nm	45.0 Nm	170 Nm
SS13150	50	1000 N	1800 N	2000 N	67 Nm	45.0 Nm	106 Nm
SS01163	63	1600 N	1400 N	-	110 Nm	17.0 Nm	100 Nm
SS03163	63	1600 N	1400 N	-	50 Nm	17.0 Nm	48 Nm
SS05163	63	1600 N	2000 N	2000 N	300 Nm	52.0 Nm	208 Nm
SS07163	63	1600 N	1100 N	1100 N	105 Nm	56.0 Nm	105 Nm
SS10163	63	1600 N	5000 N	2000 N	196 Nm	52.0 Nm	208 Nm
SS13163	63	1600 N	2500 N	2000 N	99 Nm	52.0 Nm	134 Nm

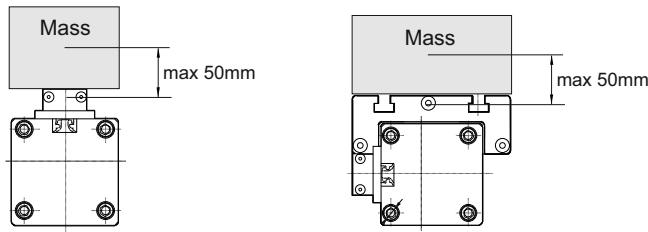
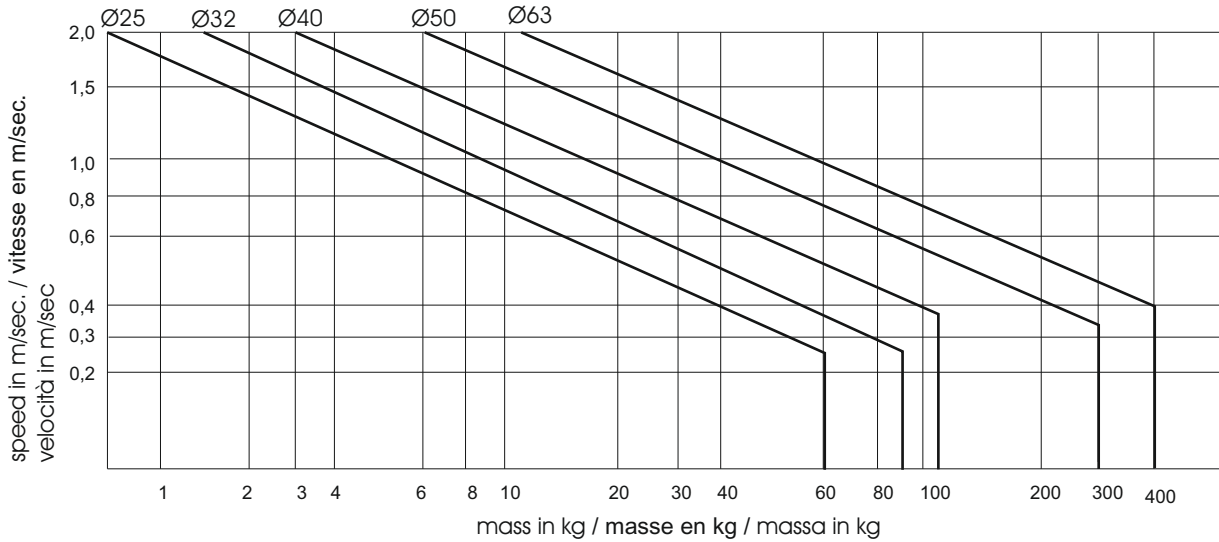
Actuators / Actionneurs / Attuatori  
RODLESS CYLINDERS  
VERINS SANS TIGE / CILINDRI SENZA STELO

CUSHIONING DIAGRAM / DIAGRAMME D'AMORTISSEMENT / DIAGRAMMA DI AMMORTIZZO

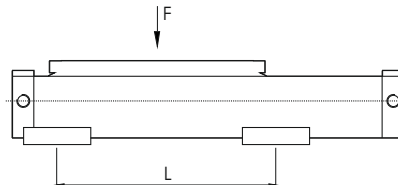
If the application is out of the diagram range, an external shock absorber is required. The mounting position of shock absorbers must be close to the center of the mass. The data applies to a horizontal mounting position.

Si la charge à amortir est plus importante il est nécessaire d'utiliser un amortisseur de choc. Cet amortisseur doit être positionné horizontalement vers le centre de la masse.

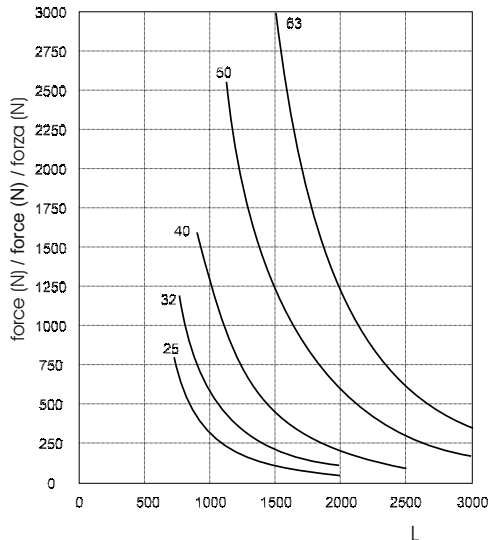
Se l'applicazione è fuori dal diagramma, viene richiesto un ammortizzatore esterno. La posizione di montaggio degli ammortizzatori deve essere vicino al centro della massa. I dati si riferiscono ad una posizione di montaggio orizzontale.



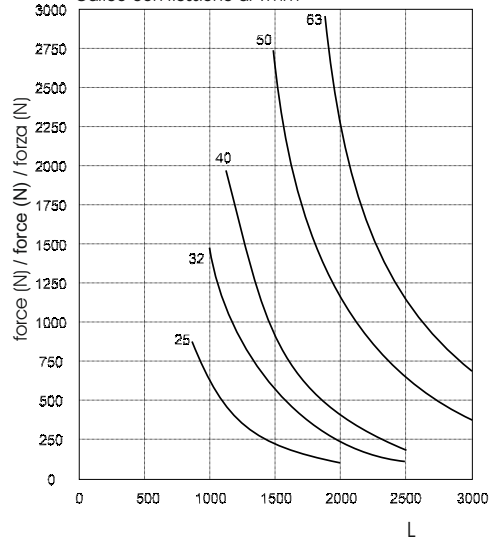
DEFLECTION WITH LOAD / CHARGE AVEC FLEXION / CARICO CON FLESSIONE



Deflection of 0,5mm  
Charge avec flexion de 0,5mm  
Carico con flessione di 0,5mm

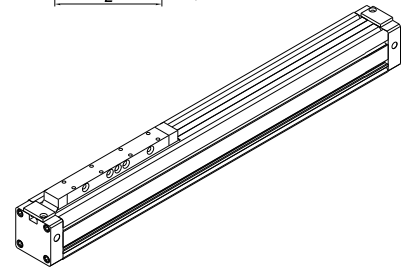
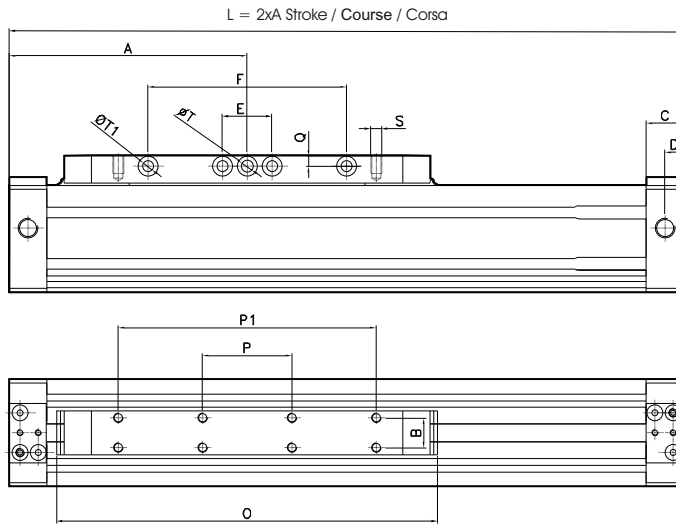
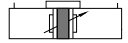


Deflection of 1mm  
Charge avec flexion de 1mm  
Carico con flessione di 1mm



Standard / Standard / Standard

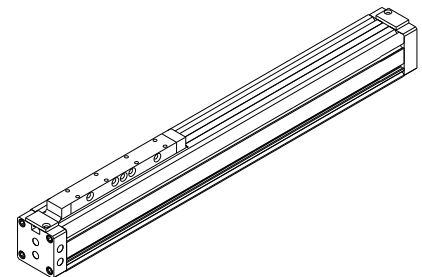
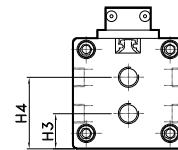
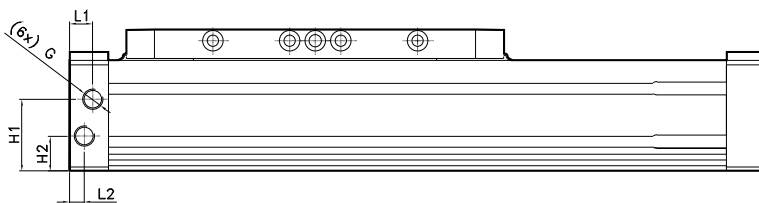
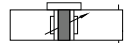
CODE: SS011.Ø.mm



Ø	A	B	C	D	E	F	G	H	O	P	P1	Q	R	S	T	T1	U	V	Z	W
25	100	15	19	9.5	25	70	G1/8"	25	149.5	50	90	5	22	M5x7	6	4.5	36	M4x11	45	60
32	120	15	19	9.5	25	100	G1/8"	32	184.5	45	130	5.5	22	M5x7	6	5.5	41	M5x11	54	69
40	150	15	23	11.5	25	130	G1/4"	38	222.5	90	160	7	22	M5x9	7	6.5	49	M6x12	64	82
50	175	34	30	17	35	180	G3/8"	59	262	60	150	9	46	M8x16	10	8.5	65	M8x17	90	115
63	200	34	30	17	50	180	G3/8"	68.5	300	80	240	9.5	46	M8x16	10	8.5	78	M8x17	106	131

Standard with connections on one side  
Standard avec alimentations sur un côté  
Standard con connessioni su un lato

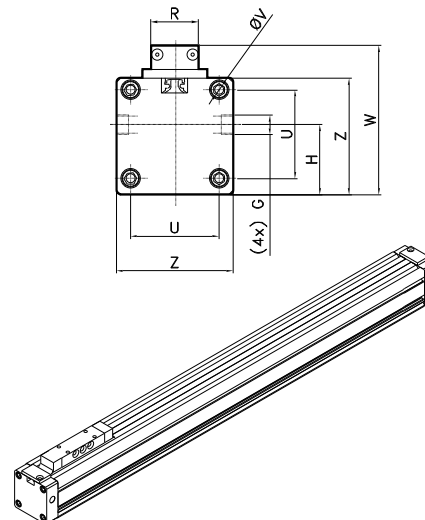
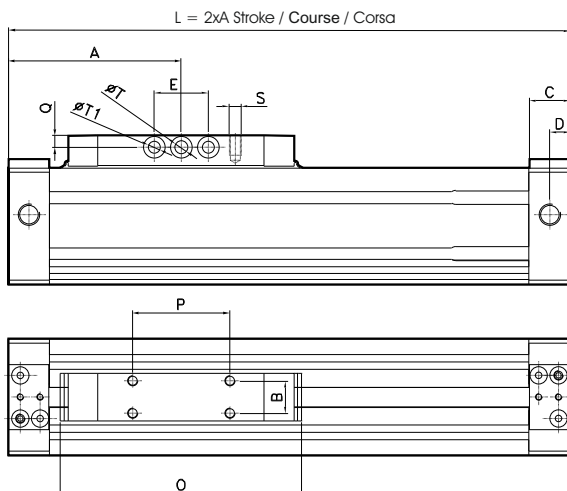
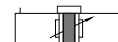
CODE: SS012.Ø.mm



Ø	H1	H2	H3	H4	L1	L2	G
25	28.5	13.5	13.5	29.5	11	8	G1/8"
32	34.5	17.5	17.5	34.5	9.5	9.5	G1/8"
40	42.5	20.5	15.5	38	11.5	11.5	G1/4"
50	59	29	29.5	59	17	17	G3/8"
63	68.5	34	34	68.5	17	17	G3/8"

Short / Court / Corto

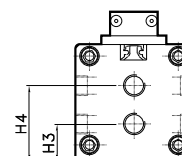
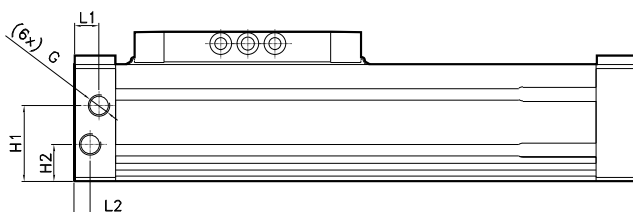
CODE: SS031.Ø.mm



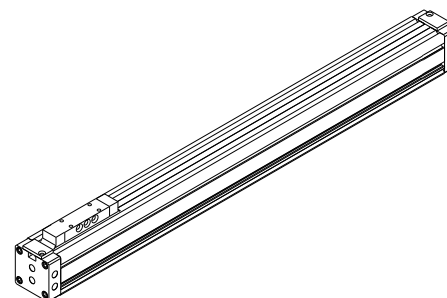
Ø	A	B	C	D	E	G	H	O	P	Q	R	S	T	T1	U	V	Z	W
25	67.5	15	19	9.5	25	G1/8"	25	84.5	35	5	22	M5x7	6	4.5	36	M4x11	45	60
32	77.5	15	19	9.5	25	G1/8"	32.5	99.5	45	5.5	22	M5x7	6	5.5	41	M5x11	54	69
40	95	15	23	11.5	25	G1/4"	38.5	112.5	50	7	22	M5x9	7	6.5	49	M6x12	64	82
50	105	34	30	17	35	G3/8"	59	122	64	9	46	M8x16	10	8.5	65	M8x17	90	115
63	125	34	30	17	50	G3/8"	68.5	150	80	9.5	46	M8x16	10	8.5	78	M8x17	106	131

Short with connections on one side  
Court avec alimentations sur un côté  
Corto con connessioni su un lato

CODE: SS032.Ø.mm

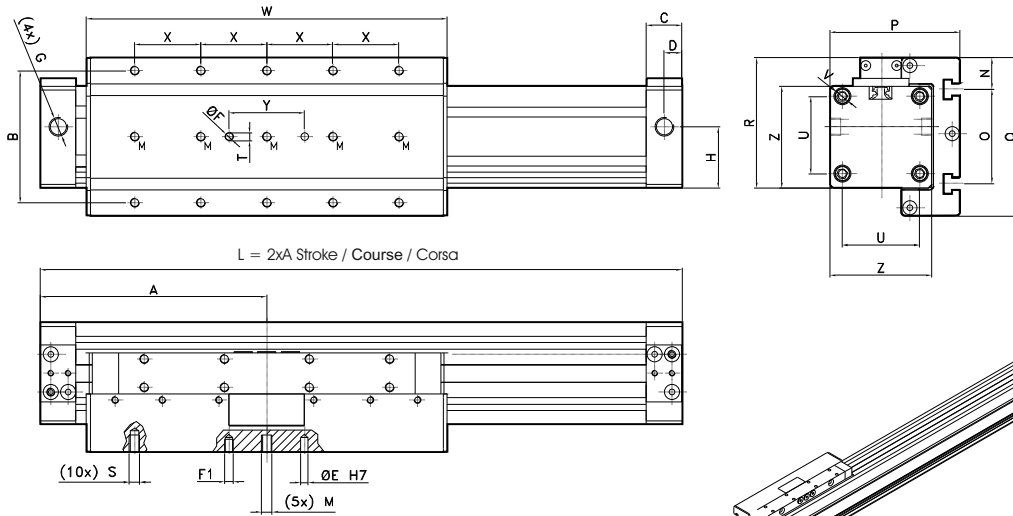
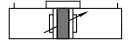


Ø	H1	H2	H3	H4	L1	L2	G
25	28.5	13.5	13.5	29.5	11	8	G1/8"
32	34.5	17.5	17.5	34.5	9.5	9.5	G1/8"
40	42.5	20.5	15.5	38	11.5	11.5	G1/4"
50	59	29	29.5	59	17	17	G3/8"
63	68.5	34	34	68.5	17	17	G3/8"



Standard guided  
Guide standard  
Standard guidato

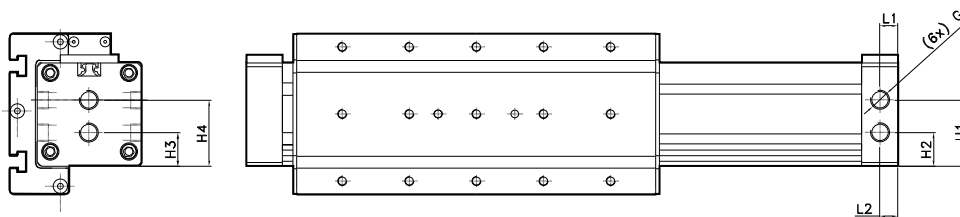
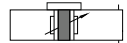
CODE: SS051.Ø.mm



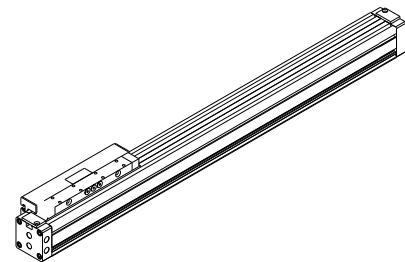
Ø	A	B	C	D	E	F	F1	G	H	M	N	O	P	Q	R	S	T	U	V	Z	X	Y	W
25	100	30	19	9.5	4x5.5	4x5.5	4.5x4.5	G1/8"	25	/	12.5	50	59	75	60	M5x8	4	36	M4x11	45	30	40	159
32	120	70	19	9.5	4x8	4x8	4.5x7	G1/8"	32	M5x9	17	50	69	84	69	M5x11	4	41	M5x11	54	35	40	191
40	150	55	23	11.5	6x8	6x8	6.5x7	G1/4"	38	/	10	80	79	100	82	M6x12	6	49	M6x12	64	55	40	246
50	175	42	30	17	6x3	/	6.5x3	G3/8"	59	/	23	94	112.5	133	115	M8x16	6	65	M8x17	90	50	40	270
63	200	60	30	17	6x6.5	/	6.5x6.5	G3/8"	68.5	/	24	110	134.5	150	132	M8x16	6	78	M8x17	106	60	40	320

Standard guided with connections on one side  
Standard avec alimentations sur un côté  
Standard guidato con connessioni su un lato

CODE: SS052.Ø.mm

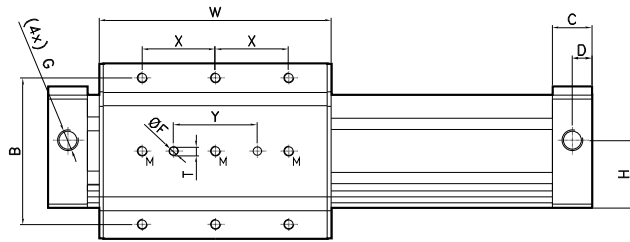
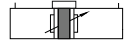


Ø	H1	H2	H3	H4	L1	L2	G
25	28.5	13.5	13.5	29.5	11	8	G1/8"
32	34.5	17.5	17.5	34.5	9.5	9.5	G1/8"
40	42.5	20.5	15.5	38	11.5	11.5	G1/4"
50	59	29	29.5	59	17	17	G3/8"
63	68.5	34	34	68.5	17	17	G3/8"

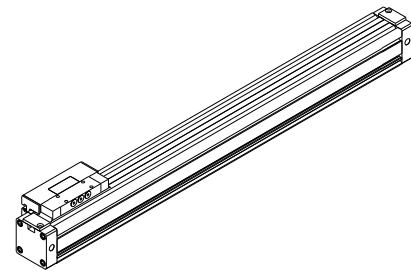
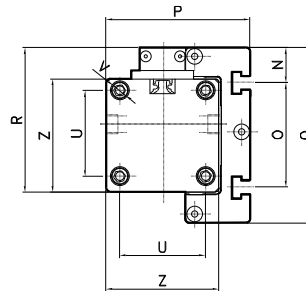
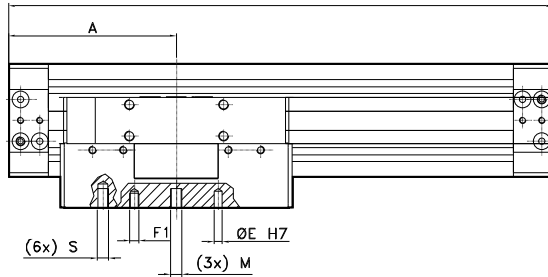


Short guided  
Guidage court  
Corto guidato

CODE: SS071.Ø.mm



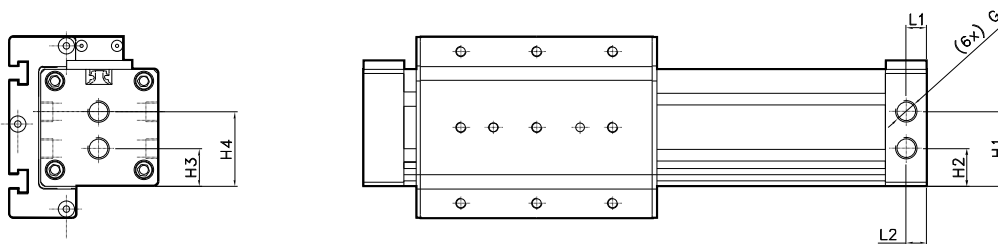
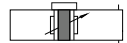
L = 2xA Stroke / Course / Corsa



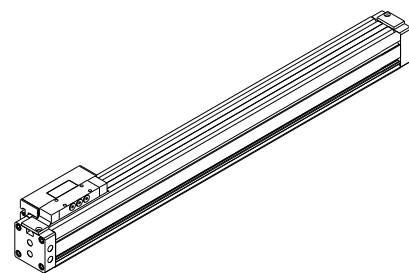
Ø	A	B	C	D	E	F	F1	G	H	M	N	O	P	Q	R	S	T	U	V	Z	X	Y	W
25	67.5	30	19	9.5	4x5.5	4x5.5	4.5x4.5	G1/8"	25	/	12.5	50	59	75	60	M5x8	4	36	M4x11	45	30	40	94
32	77.5	70	19	9.5	4x8	4x8	4.5x7	G1/8"	32.5	M5x9	17	50	69	84	69	M5x11	4	41	M5x11	54	35	40	106
40	95	55	23	11.5	6x8	6x8	6.5x7	G1/4"	38.5	/	10	80	79	100	82	M6x12	6	49	M6x12	64	55	40	136
50	105	42	30	17	6x3	/	6.5x3	G3/8"	59	/	23	94	112.5	133	115	M8x16	6	65	M8x17	90	50	40	148
63	125	60	30	17	6x6.5	/	6.5x6.5	G3/8"	68.5	/	24	110	134.5	150	132	M8x16	6	78	M8x17	106	60	40	180

Short guided with connections on one side  
Court avec alimentations sur un côté  
Corto guidato con connessioni su un lato

CODE: SS072.Ø.mm

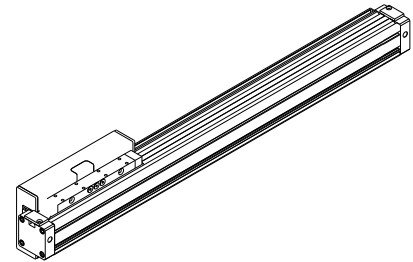
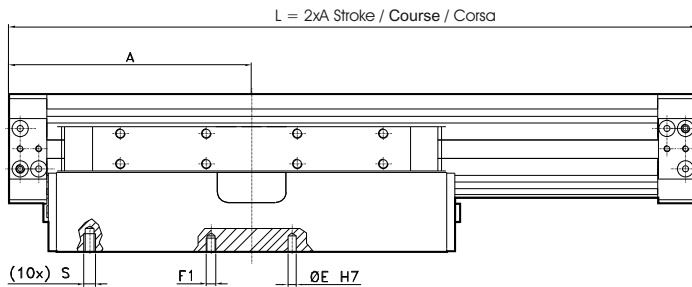
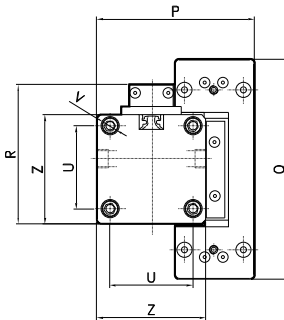
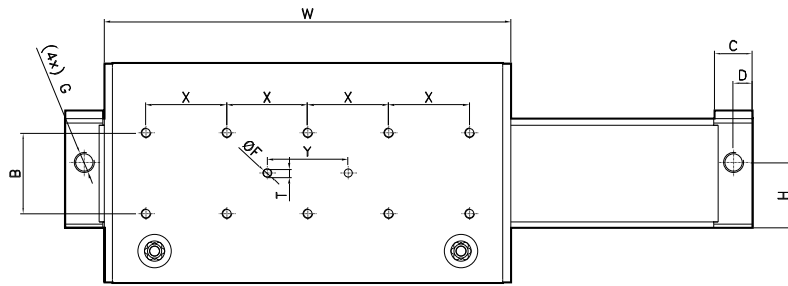
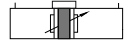


Ø	H1	H2	H3	H4	L1	L2	G
25	28.5	13.5	13.5	29.5	11	8	G1/8"
32	34.5	17.5	17.5	34.5	9.5	9.5	G1/8"
40	42.5	20.5	15.5	38	11.5	11.5	G1/4"
50	59	29	29.5	59	17	17	G3/8"
63	68.5	34	34	68.5	17	17	G3/8"



Standard with guida ball bushings  
Standard avec roulement à sphere  
Standard con guida a riciccolo di sfere

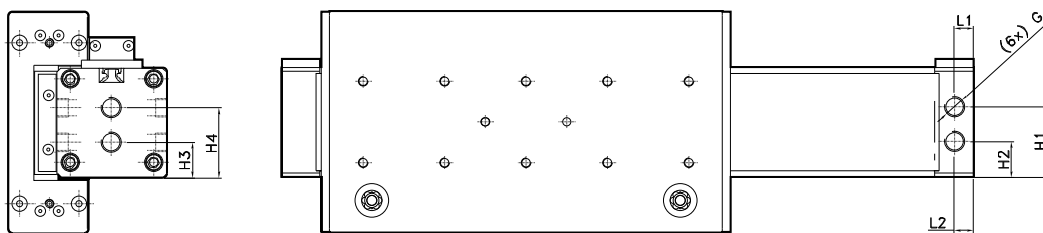
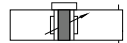
CODE: SS101.Ø.mm



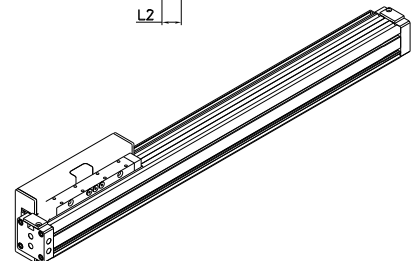
Ø	A	B	C	D	E	F	F1	G	H	P	Q	R	S	T	U	V	Z	X	Y	W
25	100	40	19	9.5	4x8	4x8	4.5x7	G1/8"	25	68	97	60	M5x7.5	4	36	M4x11	45	40	40	160
32	120	40	19	9.5	4x8	4x8	4.5x7	G1/8"	32.5	78	109	69	M6x9	4	41	M5x11	54	40	40	201
40	150	55	23	11.5	6x8	6x8	6.5x7	G1/4"	38	90.5	145	82	M6x12	6	49	M6x12	64	55	40	252
50	175	55	30	17	6x3.5	6x3.5	6.5x3	G3/8"	59	120	164	115	M8x15	6	65	M8x17	90	55	40	270
63	200	70	30	17	6x7	6x7	6.5x6.5	G3/8"	68.5	137	180	132	M8x17	6	78	M8x17	106	70	40	320

Standard with guida ball bushings with connections on one side  
Standard roulement a sphere avec alimentations sur un côté  
Standard con guida a riciccolo di sfere con connessioni su un lato

CODE: SS102.Ø.mm



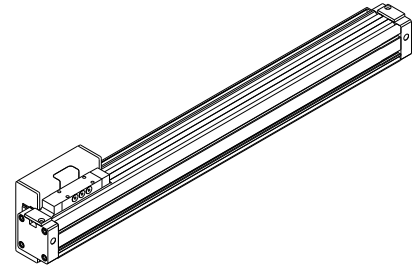
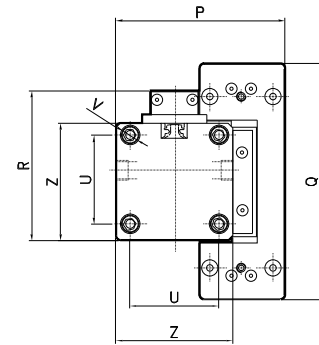
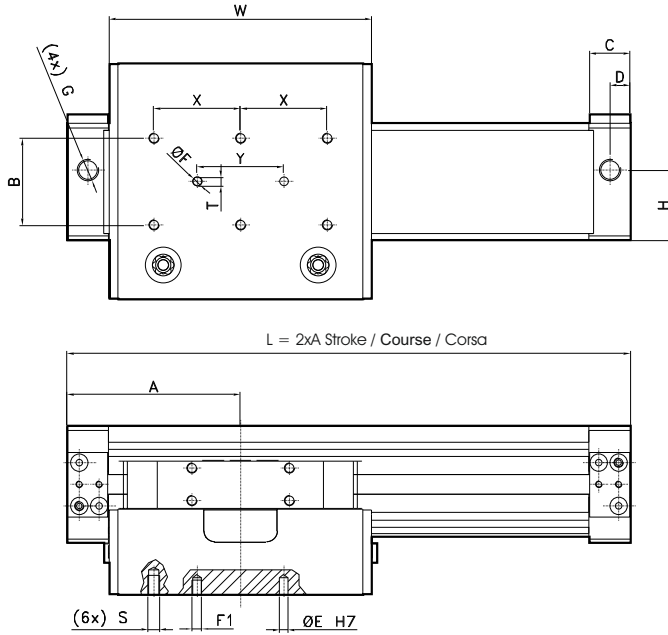
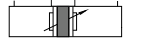
Ø	H1	H2	H3	H4	L1	L2	G
25	28.5	13.5	13.5	29.5	11	8	G1/8"
32	34.5	17.5	17.5	34.5	9.5	9.5	G1/8"
40	42.5	20.5	15.5	38	11.5	11.5	G1/4"
50	59	29	29.5	59	17	17	G3/8"
63	68.5	34	34	68.5	17	17	G3/8"





Short with guida ball bushings  
Court avec roulement à sphere  
Corto con guida a ricircolo di sfere

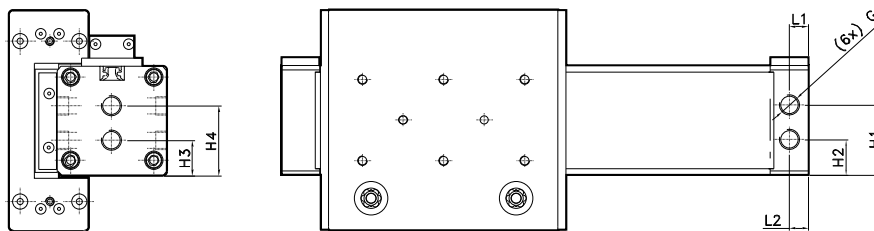
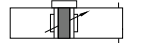
CODE: SS131.Ø.mm



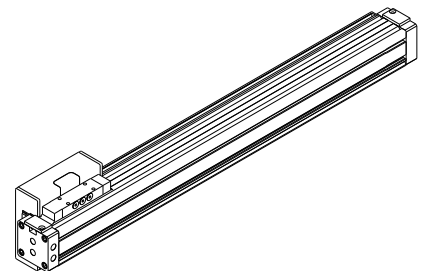
Ø	A	B	C	D	E	F	F1	G	H	P	Q	R	S	T	U	V	Z	X	Y	W
25	67.5	40	19	9.5	4x8	4x8	4.5x7	G1/8"	25	68	97	60	M5x7.5	4	36	M4x11	45	20	40	95
32	77.5	40	19	9.5	4x8	4x8	4.5x7	G1/8"	32.5	78	109	69	M6x9	4	41	M5x11	54	40	40	115
40	95	55	23	11.5	6x8	6x8	6.5x7	G1/4"	38	90.5	145	82	M6x12	6	49	M6x12	64	55	40	143.5
50	105	55	30	17	6x3.5	6x3.5	6.5x3	G3/8"	59	120	164	115	M8x15	6	65	M8x17	90	27.5	40	148
63	125	70	30	17	6x7	6x7	6.5x6.5	G3/8"	68.5	137	180	132	M8x17	6	78	M8x17	106	70	40	188

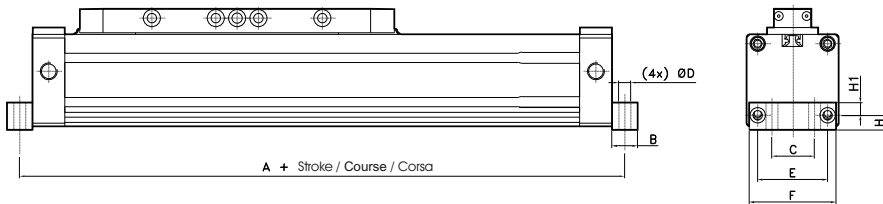
Short with guida ball bushings with connections on one side  
Court roulement a sphere avec alimentations sur un côté  
Corto con guida a ricircolo di sfere con connessioni su un lato

CODE: SS132.Ø.mm



Ø	H1	H2	H3	H4	L1	L2	G
25	28.5	13.5	13.5	29.5	11	8	G1/8"
32	34.5	17.5	17.5	34.5	9.5	9.5	G1/8"
40	42.5	20.5	15.5	38	11.5	11.5	G1/4"
50	59	29	29.5	59	17	17	G3/8"
63	68.5	34	34	68.5	17	17	G3/8"

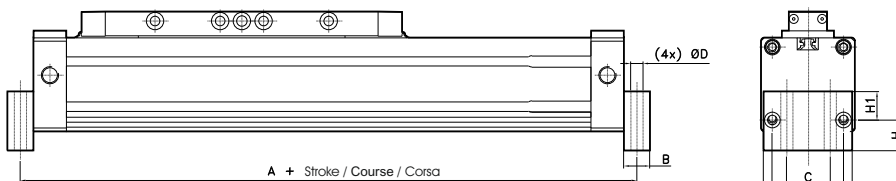




Ø	A	B	C	D	E	F	H	H1
25	210	10	22	5.5	36	45	5.5	4.5
32	255	15	25	7	41	51	8.5	7.5
40	315	15	25	9	49	64	8.5	7.5
50	365	15	40	8.5	65	89	13.5	12.5
63	415	15	50	8.5	78	105	15	14

LOW PEDESTAL  
EQUERRE BASSE  
PIEDINO BASSO

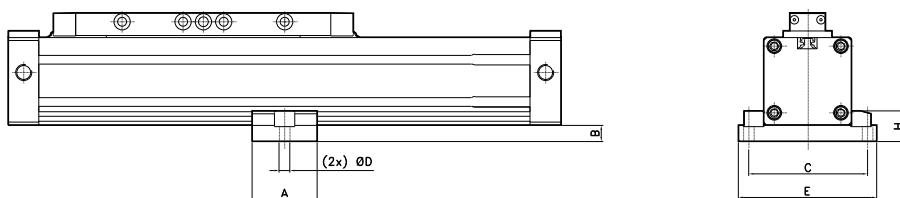
CODE	Ø
AR428025	25
AR428032	32
AR428040	40
AR428050	50
AR428063	63



Ø	A	B	C	D	E	F	H	H1
25	215	15	22	5.5	36	45	12.5	5.5
32	255	15	25	7	41	51	17.5	16.5
40	315	15	25	9	49	64	17.5	8.5
50	365	15	40	8.5	65	89	27.5	12.5
63	415	15	50	8.5	78	105	29	11

HIGH PEDESTAL  
EQUERRE LARGE  
PIEDINO ALTO

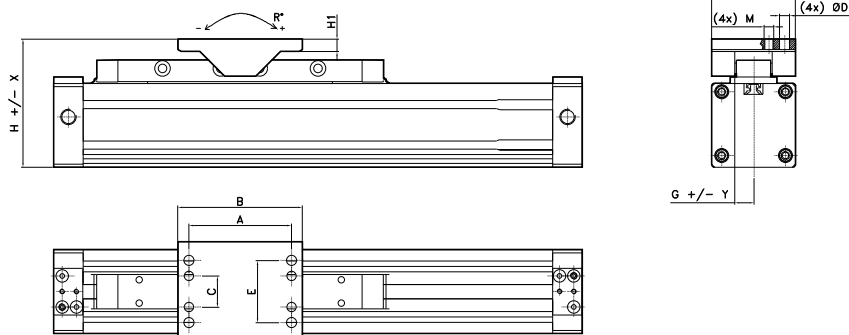
CODE	Ø
AR428125	25
AR428132	32
AR428140	40
AR428150	50
AR428163	63



Ø	A	B	C	D	E	H
25	35	8	60	5.5	70	18.5
32	40	10	73	6.5	85	18.5
40	40	10	90.5	9	105	18.5
50	70	15	120	11	138	30
63	70	15	136	11	154	36

INTERMEDIATE SUPPORT  
SUPPORT INTERMEDIAIRE  
SUPPORTO INTERMEDIO

CODE	Ø
AR428225	25
AR428232	32
AR428240	40
AR428250	50
AR428263	63



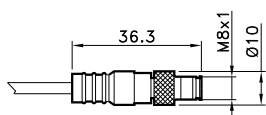
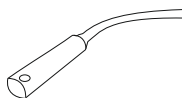
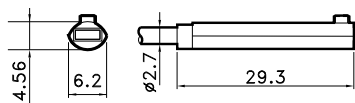
Ø	A	B	C	D	E	F	G	Y	H	X	H1	M	R
25	66	80	20	6.5	40	54	12	0.8	74	1	8	M6	8
32	66	80	20	6.5	40	54	12	0.8	82	0.5	8	M6	6
40	66	80	20	6.5	40	54	12	0.8	94.5	0.5	8	M6	6
50	102	122	23	9	51	80	24	0.8	130.5	0.5	11	M8	5
63	102	122	23	9	51	80	24	0.8	146	0.5	11	M8	4.5

SWINGING BRIDGE  
CHAPE OSCILLANTE LARGE  
CERNIERA OSCILLANTE LARGA LARGE

CODE	Ø
AR428325	25
AR428332	32
AR428340	40
AR428350	50
AR428363	63

Actuators / Actionneurs / Attuatori

RODLESS CYLINDERS  
VERINS SANS TIGE / CILINDRI SENZA STELO

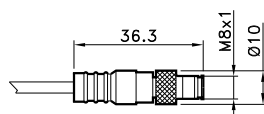
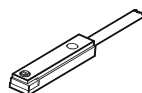
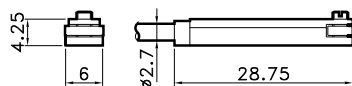


4= black / noire / nero  
1= brown / brun / marrone  
3= blue / bleu / azzurro

OVAL SWITCHES / CAPTEUR OVAL / SENSORE OVALE

CODE	
AR4019010	REED (MT.2,5)
AR4019020	HALL (MT.2,5)
AR4019110	REED + M8 (CM 30)
AR4019120	HALL + M8 (CM 30)

For technical data see page 1.57  
Pour les données techniques, voir page 1.57  
Per i dati tecnici vedere pag. 1.57



4= black / noire / nero  
1= brown / brun / marrone  
3= blue / bleu / azzurro

T SWITCH / CAPTEUR A T / SENSORE A T

CODE	
AR4023010	REED (MT.2,5)
AR4023020	HALL (MT.2,5)
AR4023110	REED + M8 (CM 30)
AR4023120	HALL + M8 (CM 30)

For technical data see page 1.58  
Pour les données techniques, voir page 1.58  
Per i dati tecnici vedere pag. 1.58