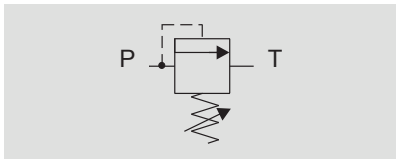
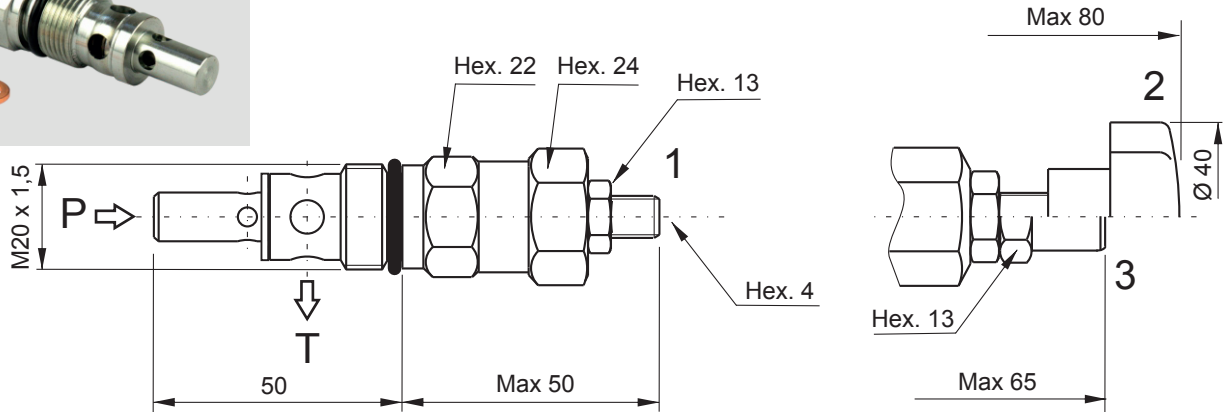


VMDC35 - DIRECT ACTING MAIN RELIEF VALVE



Main features

Max pressure	450 bar
Max flow	35 l/min
Weight	0,16 kg

Recommended tightening torque: 50 Nm
 Recommended filtration settings: 25 ÷ 50 µ
 Oil temperature: -30 ÷ + 80 °C

PPC assembly code field

D/* ?**

where *** stands for max setting pressure [bar]. Ex. D/280

where ? stands for option other than the standard one.

Mounting cavities

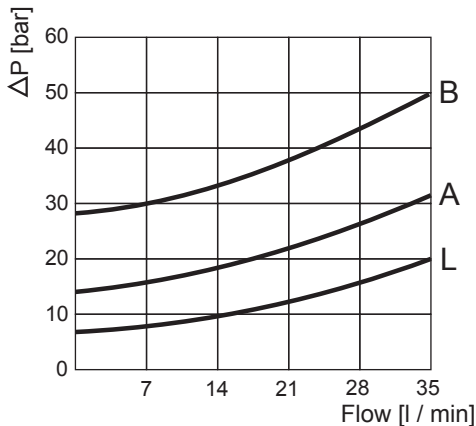
0	1		
2	3	4	
5	6	7	8

Note: cavities 3, 4 and 6 are present on central manifold type UB only.

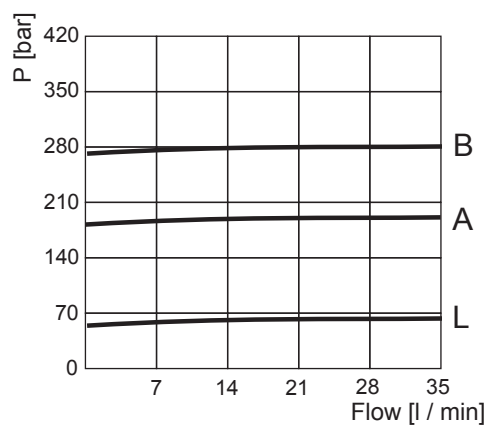
Spare part code

- VMDC** — Direct acting main relief valve
- 35** — Nominal size: 35 = 35 l/min
- B** — Working range: L = 10 ÷ 60 bar, A = 20 ÷ 180 bar, B = 35 ÷ 280 bar, C = 60 ÷ 350 bar
- 1** — Option: 1 = screw (std), 2 = handwheel, 3 = with cap, 4 = plastic seal

Minimum setting pressure



Pressure vs flow



Note: Values measured on valve alone (no cavity) with an oil viscosity of 46 cSt at 50 °C. Pressure drop may change depending on fluid viscosity and temperature