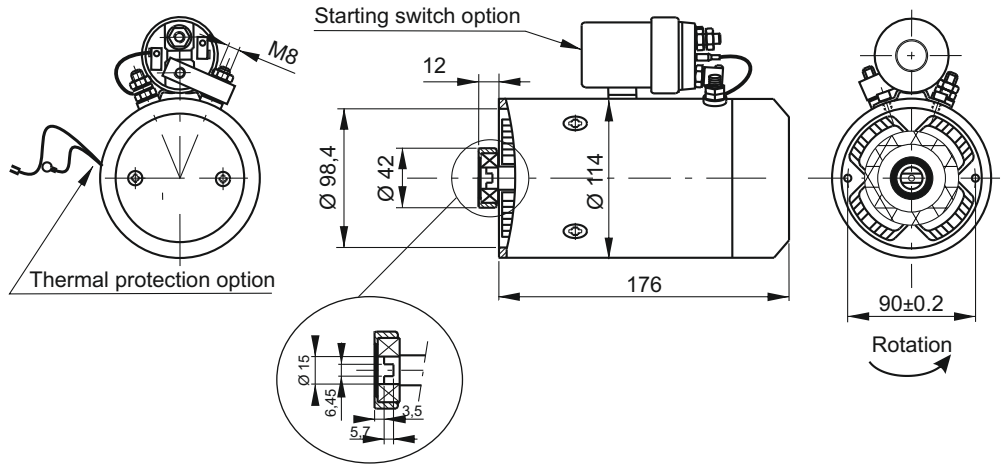


## INTEGRAL DC MOTORS Ø 114



Compound wound  
 Protection degree: IP54  
 Insulation class: F  
 Weight: 7,05 kg



Code

Description	PPC assembly code	Spare part code	Nominal duty cycle	Nominal speed	Nominal current
1600W 12V DC motor	<b>1,6 12DC</b>	<b>M46C1S016</b>	S2: 2min S3: 7,5% ED	2600 rpm	230 A
2200W 24V DC motor	<b>2,2 24DC</b>	<b>M46C2S022</b>	S2: 1,2min S3: 4,5% ED	2600 rpm	140 A
1600W 12V DC motor with thermal protection	<b>1,6 12DC/T</b>	<b>M46C1ST16</b>	S2: 2min S3: 7,5% ED	2600 rpm	230 A
2100W 12V DC motor with thermal protection	<b>2,1 12DC/T</b>	<b>M46C1ST21</b>	S2: 1,2min S3: 7,5% ED	2300 rpm	330 A
2200W 24V DC motor with thermal protection	<b>2,2 24DC/T</b>	<b>M46C2ST22</b>	S2: 1,2min S3: 4,5% ED	2600 rpm	140 A

### Options

Description	PPC assembly code	Spare part code
Starting switch 150A 12 or 24V DC + mounting kit	<b>S150 12DC 112</b> <b>S150 24DC 112</b>	<b>M47SC0001 + M47SK1121 (12V DC)</b> <b>M47SC0002 + M47SK1121(24V DC)</b>
Remote wired control with two buttons and 3m cable (see U040.40.03)	<b>P0201</b> <b>P0202</b>	<b>P0201 (single acting)</b> <b>P0202 (double acting)</b>
DC motors plastic cover	<b>F16000001</b>	<b>F16000001</b>

Notes: the starting switch mounting kit is provided when specifying the /S150 in PPC assembly code. When ordering spare starting switches, it must be ordered separately (code: M47SK1121).

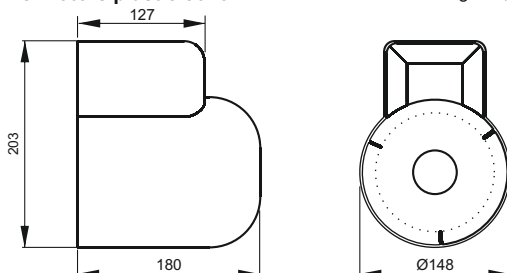
### Coupling

Description	PPC assembly code / Spare part code
Shaft coupling for Ø114 - Ø125 DC motors and gr.1 pump	<b>E36200001</b>
Shaft coupling for Ø114 motors and gr.0 pump	<b>E36200005</b>

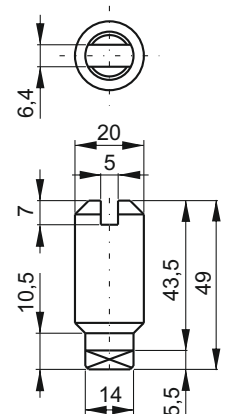
Note: the coupling is already included when specifying the motor in PPC assembly code. The coupling spare code is to be indicated only when ordering PPC with no motor, but with coupling.

### DC motors plastic cover

Weight: 0,27 kg



### Coupling E36200001



Weight: 0,094 kg