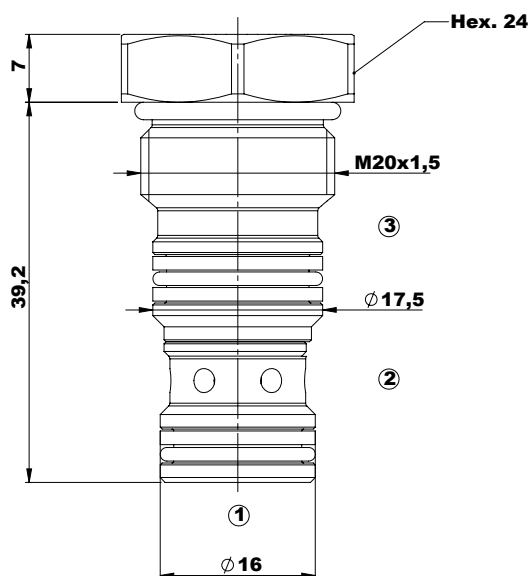
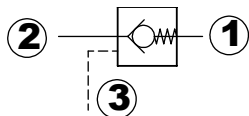


Check Valves

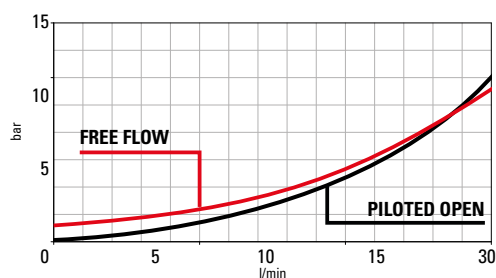
P.O.Check i08



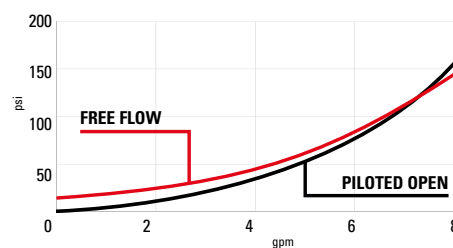
Technical Details

cavity	IH A6610
capacity	30 lpm (8 gpm)
max operating pressure	350 bar (5000 psi)
pilot ratio	3:1
maximum valve leakage at reseal	5 drops/min
valve hex size (mm)	24
valve installation torque	45-50 Nm (33-37 lbf ft)
valve weight	0,08 kg (XX lbs)
external component surface treatment	zinc plating
seal kit (nbr)	S00CVI8SN700000
seal kit (viton)	S00CVI8SV700000
temperature range	-30 to 100°C (-22 to 212°F) with BunaN seals;
fluids	Mineral based or synthetics oil with lubricating properties at viscosities of 5 to 800 mm ² /s (cSt)
filtration	Nominal value max. 10 µm (NAS 8) ISO 4406 19/17/14

• This valve is not provided with positive seals on pilot section



Performance curves



C | 6 | 2 | 0 | 0 | 2 | 3 | 3 | 0 | 0 | 6 | 6 | 0 | 0 | A

The information contained in this page is valid at the time of going to print. Valvole Italia reserves the right to modify its products without notice and does not accept liabilities for damages incurred as a consequence of these changes. To make sure you are seeing the latest product information, please visit www.valvoleitalia.it

