

RK SAFETY CLAMPS



RK SAFETY CLAMPS EN 14420-3 / DIN 2817: ALUMINIUM

ND	For hose mm	OD hose min-max mm	Dimensions		Nuts and bolts		Weight/pc Kg	Reference
			Height mm	Width mm	Quantity	Thread metric		
15	13 x 5	22 - 24	50	51	4	M6	0.12	RK013
20	19 x 6	30 - 33	50	63	4	M6	0.12	RK019
25	25 x 6	36 - 39	50	69	4	M6	0.14	RK025
25	25 x 8	40 - 43	50	73	4	M6	0.14	RK025008*
32	32 x 6	43 - 46	50	75	4	M6	0.15	RK032
32	32 x 8	47 - 50	50	79	4	M6	0.15	RK032008*
40	38 x 6.5	50 - 52	50	83	4	M6	0.15	RK038
40	38 x 8	53 - 56	50	84	4	M6	0.18	RK038008*
40	38 x 10	57 - 60	50	88	4	M7	0.18	RK038010*
40	40 x 7	53 - 56	50	86	4	M6	0.18	RK040
40	40 x 10	58 - 61	50	92	4	M6	0.19	RK040010*
50	50 x 8	64 - 67	56	102	4	M8	0.29	RK050
50	50 x 10	69 - 71	56	102	4	M8	0.33	RK050010*
65	65 x 7	78 - 82	74	120	4	M8	0.43	RK063
65	63 x 10	84 - 87	74	124	4	M8	0.45	RK063010*
80	75 x 8	89 - 93	76	132	4	M8	0.49	RK075
80	75 x 10	94 - 97	76	132	4	M8	0.52	RK075010*
80	75 x 12	98 - 101	77	138	4	M8	0.52	RK075012*
80	80 x 8	94 - 97	77	138	4	M8	0.49	RK080
80	80 x 10	99 - 102	77	138	4	M8	0.51	RK080010*
100	100 x 8	114 - 119	120	166	4	M10	1.09	RK100
100	100 x 10	118 - 122	120	167	4	M10	1.15	RK100010*
100	100 x 12	122 - 126	120	174	4	M10	1.24	RK100012*
100	100 x 14	126 - 130	120	180	4	M10	1.34	RK100014*
125	125 x 10	143 - 148	145	210	6	M10	1.88	RK125
150	150 x 10	168 - 174	180	227	6	M12	3.78	RK150
150	150 x 13	174 - 180	182	233	6	M12	3.40	RK150013*
200	200 x 12	222 - 229	243	288	8	M12	6.52	RK200
200	200 x 16	230 - 239	243	294	8	M12	6.75	RK200016*



Production method: forging

Set of RK safety clamps = one pair of clamps, nuts and bolts included

Bolts: DIN 912 / EN ISO 4762, zinc plated 8.8

Nuts: DIN 934 / EN ISO 4032, zinc plated 8

* not complying with EN 14420-3

RK SAFETY CLAMPS EN 14420-3 / DIN 2817: BRASS

ND	Hose mm	OD hose min-max mm	Dimensions		Nuts and bolts		Weight/pc Kg	Reference
			Height mm	Width mm	Quantity	Thread metric		
15	13 x 5	22 - 24	50	51	4	M6	0.29	RKM013
20	19 x 6	30 - 33	50	63	4	M6	0.34	RKM019
25	25 x 6	36 - 39	50	69	4	M6	0.39	RKM025
32	32 x 6	43 - 46	50	76	4	M6	0.40	RKM032
40	38 x 6.5	50 - 53	50	83	4	M6	0.50	RKM038
40	38 x 8	53 - 56	50	85	4	M6	0.50	RKM038008*
50	50 x 8	63 - 67	56	102	4	M8	0.90	RKM050
50	50 x 10	69 - 71	56	102	4	M8	0.90	RKM050010*
65	63 x 8	78 - 82	74	120	4	M8	1.21	RKM063
65	63 x 10	84 - 87	74	120	4	M8	1.31	RKM063010*
80	75 x 8	89 - 93	76	132	4	M8	1.39	RKM075
80	75 x 10	94 - 97	76	132	4	M8	1.52	RKM075010*
100	100 x 8	114 - 119	120	166	4	M10	1.09	RKM100



Production method: forging

Set of RK safety clamps = one pair of clamps, nuts and bolts included

Bolts: DIN 912 / EN ISO 4762, zinc plated 8.8

Nuts: DIN 934 / EN ISO 4032, zinc plated 8

* not complying with EN 14420-3



RK SAFETY CLAMPS



RK SAFETY CLAMPS EN 14420-3 / DIN 2817: STAINLESS STEEL

ND	Hose mm	OD hose min-max mm	Dimensions		Nuts and bolts		Weight/pc Kg	Reference
			Height mm	Width mm	Quantity	Thread metric		
15	13 x 5	22 - 24	50	51	4	M6	0.25	RKR013
20	19 x 6	30 - 33	50	63	4	M6	0.30	RKR019
25	25 x 6	36 - 39	50	69	4	M6	0.33	RKR025
32	32 x 6	43 - 46	50	76	4	M6	0.37	RKR032
40	38 x 6.5	50 - 53	50	83	4	M6	0.41	RKR038
50	50 x 8	63 - 67	56	102	4	M8	0.69	RKR050
50	50 x 10	69 - 71	56	102	4	M8	0.81	RKR050010*
65	63 x 8	78 - 82	74	120	4	M8	1.06	RKR063
80	75 x 8	89 - 93	76	132	4	M8	1.20	RKR075
100	100 x 8	114 - 119	120	166	4	M10	2.90	RKR100



Production method: investment casting

Set of RK safety clamps = one pair of clamps, nuts and bolts included

Bolts: DIN 912 / EN ISO 4762, stainless steel A.2

Nuts: DIN 934 / EN ISO 4032, stainless steel A.2

* not complying with EN 14420-3

RK SAFETY CLAMPS



D.1.

BOLTS EN ISO 4762

Size	Material	Box quantity	Weight/pc Kg	Reference
M6x20	Zinc plated 8.8	500	3.22	BVID06X20
M8x25	Zinc plated 8.8	200	2.94	BVID08X25
M10x40	Zinc plated 8.8	100	3.20	BVID10X40
M12x60	Zinc plated 8.8	100	6.30	BVID12x60
M6x20	Stainless steel A.2	500	3.16	BRID06X20
M8x25	Stainless steel A.2	200	3.00	BRID08X25
M10x40	Stainless steel A.2	100	3.20	BRID10X40



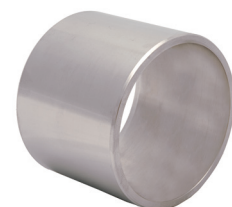
NUTS EN ISO 4032

Size	Material	Box quantity	Weight/pc Kg	Reference
M6	Zinc plated 8	250	0.55	MVD06
M8	Zinc plated 8	250	1.20	MVD08
M10	Zinc plated 8	250	1.75	MVD10
M12	Zinc plated 8	100	1.60	MVD12
M6	Stainless steel A.2	250	0.50	MRD06
M8	Stainless steel A.2	250	1.10	MRD08
M10	Stainless steel A.2	250	1.60	MRD10



IDENTIFICATION RING

ND	Material	Ø ID mm	Weight/pc Kg	Reference
15	Stainless steel	34.0	0.03	IR013
20	Stainless steel	38.0	0.06	IR019
25	Stainless steel	43.0	0.07	IR025
32	Stainless steel	48.3	0.08	IR032
40	Stainless steel	60.3	0.12	IR038
50	Stainless steel	70.0	0.11	IR050
80	Stainless steel	101.6	0.28	IR075
100	Stainless steel	129.0	0.44	IR100



Polished stainless steel AISI 304 - 1.4301

Identification rings are slid across the hose containing engraved technical information like working pressure, hose identification, certification number, ...

