

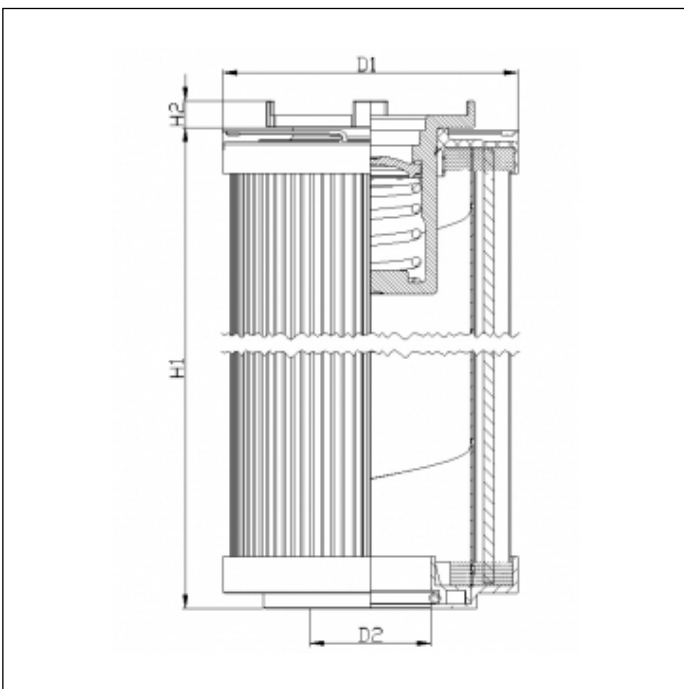
## R164G10B

printed on: 30-10-2023



### TECHNICAL INFO

Media type	INORGANIC FIBERGLASS
Efficiency	10 $\mu\text{m}_{(c)}$ $\beta_x \geq 200$
Efficiency 1	12 $\mu\text{m}_{(c)}$ $\beta_x \geq 1000$
Flow direction	OUT-IN
Collapse $\Delta p$	10 bar
Bypass setting	1.7 bar
Seals	NBR
Temperature range	-30°C +100°C



### OVERALL DIMENSIONS

D1	130,0 mm
D2	64,5 mm
H1	250,0 mm
H2	9,0 mm

Technical information may change without notice. Image and drawing are representative only