

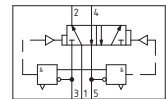
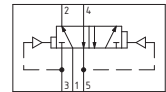
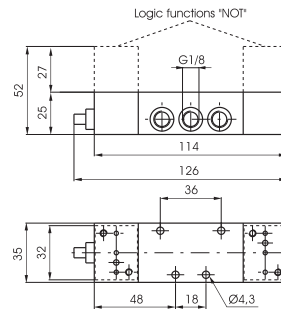
Oscillator valve G 1/8"

Coding: 900.52.6

Operational characteristics	
Fluid	Filtered and lubricated air
Max. working pressure (bar)	8
Min. working pressure (bar)	2
Temperature °C	-5 ... +70
Flow rate at 6 bar with $\Delta p=1$ (NI/min)	540
Orifice size (mm)	6
Working ports size	G1/8"

FUNCTION
5 = without logic functions NOT
5C = with logic functions NOT

Weight 600 g

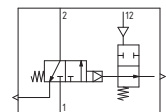
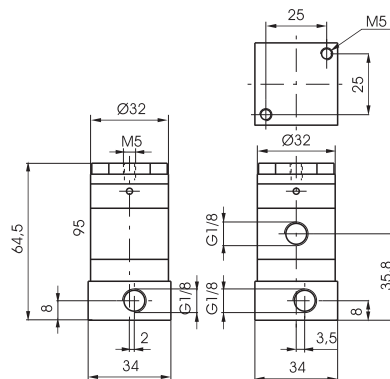


Signal amplifier G 1/8"

Coding: 900.32.6

Operational characteristics	
Fluid	Filtered and lubricated air
Max. working pressure (bar)	10
Min. working pressure (bar)	0.05
Temperature °C	-5 ... +70
Flow rate at 6 bar with $\Delta p=1$ (NI/min)	130
Orifice size (mm)	3
Working ports size	G1/8"

Weight 170 g



Progressive start-up valve G 1/4"

Coding: 900.14.7

Operational characteristics	
Fluid	Filtered and lubricated air
Working pressure (bar)	2,5 ... 10
Temperature °C	-5 ... +70
Flow rate from 1 to 2 (NI/min)	760
Flow rate from 2 to 1 (NI/min)	900
Orifice size (mm)	6

Weight 100 g

Flow rate needle fully open from port 1 to 2 (NI/min.) = 200

