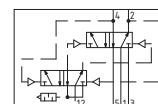
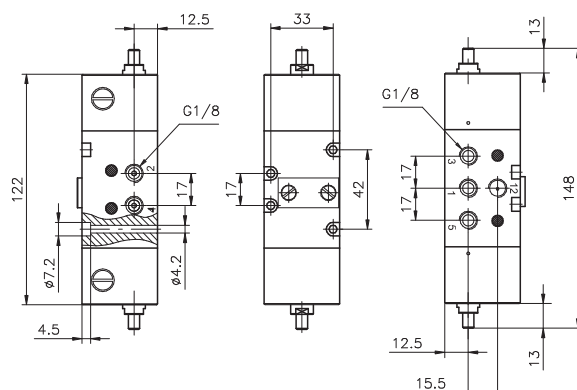


### Flip-flop valve G 1/8"-Pneumatic command

**Coding: 900.52.1.3**

Weight 550 g

Operational characteristics	
Fluid	Filtered and lubricated air
Max. working pressure (bar)	10
Temperature °C	-5 ... +70
Flow rate at 6 bar with $\Delta p=1$ (l/min)	540
Orifice size (mm)	6
Working ports size	G1/8"



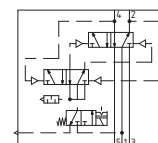
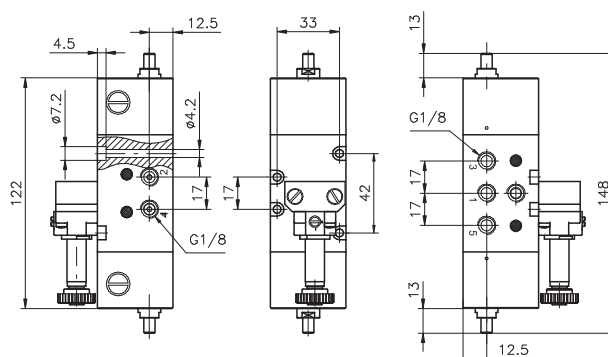
Attention : Pressure of signal "12" must be the same or higher than device inlet pressure. The maximum distance between the pilot valve and the device must not exceed 1Mtr. (see pneumatic scheme). Should be necessary to work at a greater distance it is advisable to use a pneumatic spring shut-off valve positioned at the recommended distance.

### Flip-flop valve-Electric command with M2 mechanic

Coding: 900.52.1.4

Weight 660 g

Operational characteristics	
Fluid	Filtered and lubricated air
Max. working pressure (bar)	10
Temperature °C	-5 ... +70
Flow rate at 6 bar with $\Delta p=1$ (Nl/min)	540
Orifice size (mm)	6
Working ports size	G1/8"



### Flip-flop valve-Electric command with M3P CNOMO

**Coding: 900.52.1.5**

Weight 600 g

Operational characteristics	
Fluid	Filtered and lubricated air
Max. working pressure (bar)	10
Temperature °C	-5 ... +70
Flow rate at 6 bar with $\Delta p=1$ (l/min)	540
Orifice size (mm)	6
Working ports size	G1/8"

