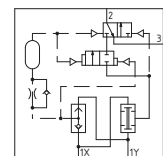
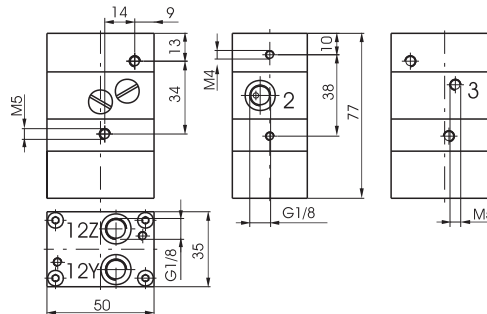


Two hands safety valve ISO 13851: TYPE IIIA

Coding: 900.18.9

Weight 340 g

Operational characteristics	
Fluid	Filtered and lubricated air
Working pressure (bar)	3 ... 8
Temperature °C	-5 ... +70
Flow rate at 6 bar with $\Delta p=1$ (l/min)	40
Orifice size (mm)	2.5
Working ports size	G1/8"
Pilot ports size	G1/8"

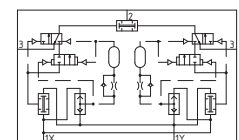
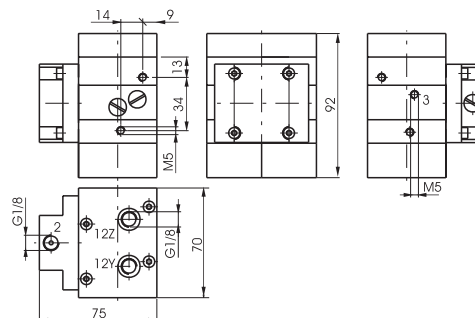


Two hands safety valve ISO 13851: TYPE IIIB

Coding: 900.18.10

Weight 980 g

Operational characteristics	
Fluid	Filtered and lubricated air
Working pressure (bar)	3 ... 8
Temperature °C	-5 ... +70
Flow rate at 6 bar with $\Delta p=1$ (l/min)	40
Orifice size (mm)	2.5
Working ports size	G1/8"
Pilot ports size	G1/8"



Power valve adaptor (Series 2400)

Coding: 900.18.11

Weight 75 g

