

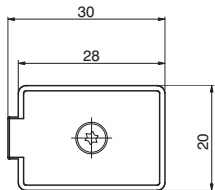


► Closing plate

Coding: 888M.22.PC



Weight 3 g
Closing plate supplied complete with 1 Seal and fixing screw with O ring
Maximum fixing torque for fittings: 0,35Nm

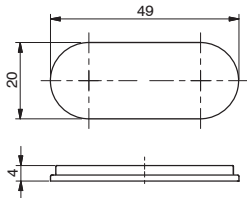


► Multi-pin base plug

Coding: 888M.T



Weight 2,6 g
Complete with: Nr. 1 Plug, Nr. 2 Fixing screws

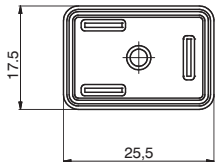


► Seals

Coding: 888M.22.G



Weight 0,52 g



► In line cable complete with connector, IP40

Coding: 2400.C.L.00



	CONNECTOR
C	25 = 25 poles
	37 = 37 poles
	CABLE LENGTH
L	03 = 3 meters
	05 = 5 meters
	10 = 10 meters

► Cable complete with connector, 25 Poles, IP65

Coding: 2300.25.L.C



	CABLE LENGTH
L	03 = 3 meters
	05 = 5 meters
	10 = 10 meters
	CONNECTOR
C	10 = Stand alone
	90 = 90° Angle

► Cable complete with connector, 37 Poles, IP65

Coding: 2400.37.L.C



	CABLE LENGTH
L	03 = 3 meters
	05 = 5 meters
	10 = 10 meters
	CONNECTOR
C	10 = Stand alone
	90 = 90° Angle