

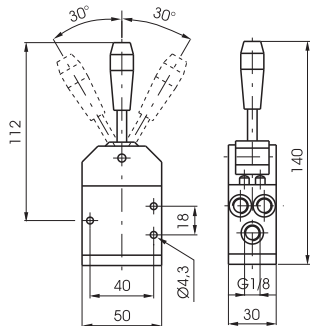
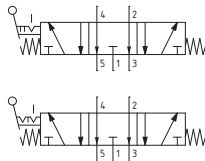


Lever central Metal

Coding: 228.53.32.99. **F/C**

Operational characteristics	
Fluid	Filtered air. No lubrication needed, if applied it shall be continuous
Max. working pressure (bar)	10
Temperature °C	-5 ... +70
Flow rate at 6 bar with $\Delta p=1$ (l/min)	410
Orifice size (mm)	6
Working ports size	G1/8"

FUNCTION	
F	2 = 2 stable positions
	3 = 3 stable positions
LEVER COLOR	
C	1 = Red
	2 = Black



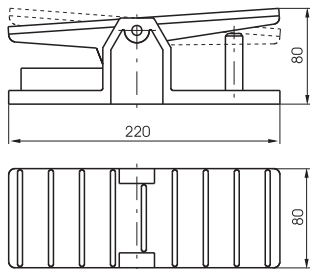
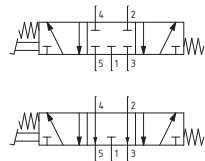
Weight 140 g

Pedal - Spring 3 positions

Coding: 228.53. **10.1**

Operational characteristics	
Fluid	Filtered air. No lubrication needed, if applied it shall be continuous
Max. working pressure (bar)	10
Temperature °C	-5 ... +70
Flow rate at 6 bar with $\Delta p=1$ (l/min)	410
Orifice size (mm)	6
Working ports size	G1/8"

FUNCTION	
F	31 = Closed centres
	32 = Open centres



Weight 810 g