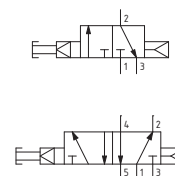


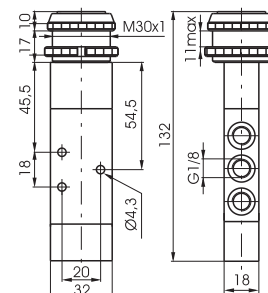
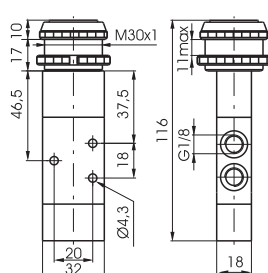


Coding: 228.T.6.13/C

	TYPE
T	32 = 3 ways, 2 positions
	52 = 5 ways, 2 positions
	BUTTON COLOR
C	1 = Red
	2 = Black
	3 = Green



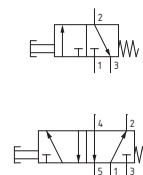
5/2 ways



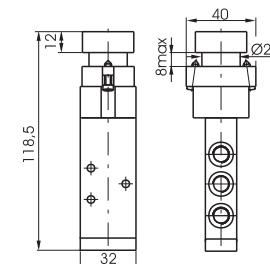
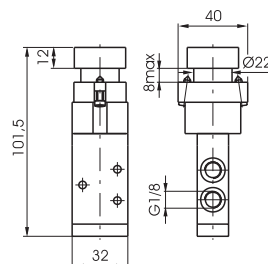
Weight 217 g
Operating force 18,5 N (at 6 bar)

Coding: 228.T.6.22/C

	TYPE
T	32 = 3 ways, 2 positions 52 = 5 ways, 2 positions
	BUTTON COLOR
C	1 = Red 2 = Black 3 = Green 4 = Yellow



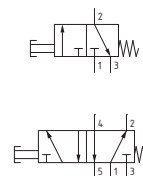
5/2 ways



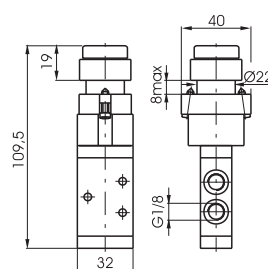
Weight 245 g
Operating force 33 N
228.5

Coding: 228.T.6.23/C

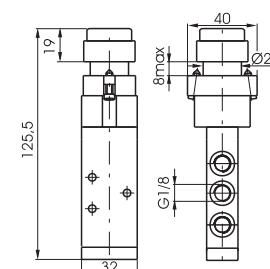
	TYPE
T	32 = 3 ways, 2 positions 52 = 5 ways, 2 positions
	BUTTON COLOR
	1 = Red
C	2 = Black 3 = Green 4 = Yellow



5/2 ways



A detailed view of a vertical industrial component, likely a valve or actuator. It features a cylindrical top section with a flange, a central body with two circular ports, and a base with three additional ports. A label is visible on the side of the main body.



Weight 250 g
Operating force 33 N
228.5