



Spool type valves and solenoid valves Series 200 - Pneumatic command valves - G1/8"

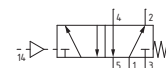
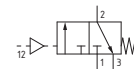
Pneumatic - Spring

Coding: 228.●.11.1

Operational characteristics

Fluid	Filtered air. No lubrication needed, if applied it shall be continuous
Max. working pressure (bar)	10
Temperature °C	-5 ... +70
Flow rate at 6 bar with $\Delta p=1$ (NI/min)	540
Orifice size (mm)	6
Working ports size	G1/8"
Pilot ports size	G1/8"

TYPE	
● 32 = 3 ways, 2 positions	
52 = 5 ways, 2 positions	

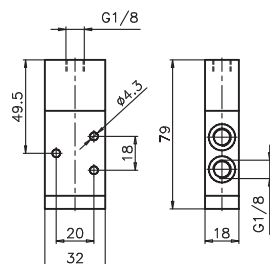


3/2 ways



Weight 110 g
Minimum pilot pressure 2,5 bar

228.32.11.1

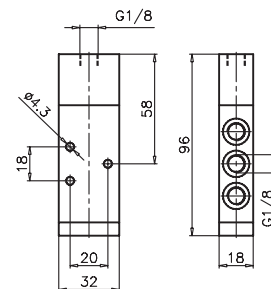


5/2 ways



Weight 130 g
Minimum pilot pressure 2,5 bar

228.52.11.1



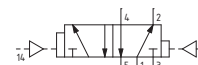
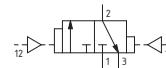
Pneumatic - Differential

Coding: 228.●.11.12

Operational characteristics

Fluid	Filtered air. No lubrication needed, if applied it shall be continuous
Max. working pressure (bar)	10
Temperature °C	-5 ... +70
Flow rate at 6 bar with $\Delta p=1$ (NI/min)	540
Orifice size (mm)	6
Working ports size	G1/8"
Pilot ports size	G1/8"

TYPE	
● 32 = 3 ways, 2 positions	
52 = 5 ways, 2 positions	

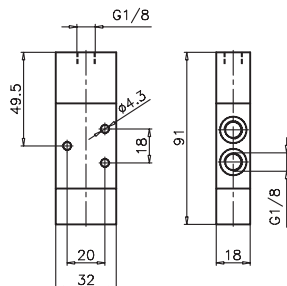


3/2 ways



Weight 140 g
Minimum pilot pressure 2,5 bar

228.32.11.12

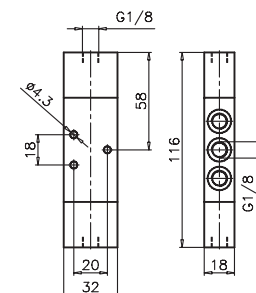


5/2 ways



Weight 160 g
Minimum pilot pressure 2,5 bar

228.52.11.12



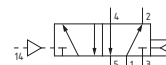
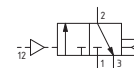
Pneumatic-Differential (Self feeding)

Coding: 228.●.11.12/1

Operational characteristics

Fluid	Filtered air. No lubrication needed, if applied it shall be continuous
Max. working pressure (bar)	10
Temperature °C	-5 ... +70
Flow rate at 6 bar with $\Delta p=1$ (NI/min)	540
Orifice size (mm)	6
Working ports size	G1/8"
Pilot ports size	G1/8"

TYPE	
● 32 = 3 ways, 2 positions	
52 = 5 ways, 2 positions	

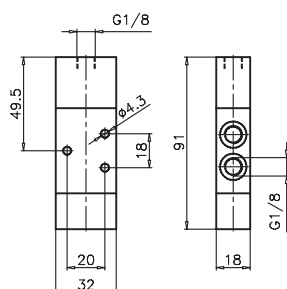


3/2 ways



Weight 130 g
Minimum pilot pressure 2,5 bar

228.32.11.12/1



5/2 ways



Weight 150 g
Minimum pilot pressure 2,5 bar

228.52.11.12/1

