

## Pneumatic - Pneumatic 5/3

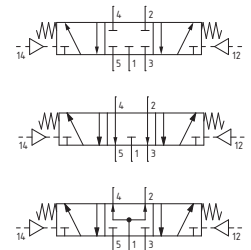
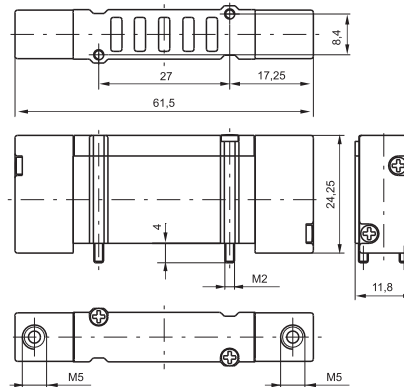
Coding: 2141.53. **F**.18

Operational characteristics	
Fluid	Filtered air. No lubrication needed, if applied it shall be continuous
Max. working pressure (bar)	7
Temperature °C	-5 ... +50
Flow rate at 6 bar with $\Delta p=1$ (NI/min)	180 (Pressured centres) 130 (Closed centres) 140 (Open centres)
Orifice size (mm)	2.5
Working ports size	M5

FUNCTION	
<b>F</b>	31 = Closed centres
	32 = Open centres
	33 = Pressured centres



Weight 28 g  
Minimum pilot pressure 2,5 bar



## Solenoid - Solenoid 5/3

Coding: 2141.53. **F**.35. **T**

Operational characteristics	
Fluid	Filtered air. No lubrication needed, if applied it shall be continuous
Max. working pressure (bar)	7
Temperature °C	-5 ... +50
Flow rate at 6 bar with $\Delta p=1$ (NI/min)	180 (Pressured centres) 130 (Closed centres) 140 (Open centres)
Orifice size (mm)	2.5
Working ports size	M5

FUNCTION	
<b>F</b>	31 = Closed centres
	32 = Open centres
	33 = Pressured centres
VOLTAGE	
<b>01</b>	= + 12 V DC 90° conn. with LED
<b>21</b>	= + 12 V DC line conn. with LED
<b>02</b>	= + 24 V DC 90° conn. with LED
<b>22</b>	= + 24 V DC line conn. with LED
<b>11</b>	= + 12 V DC 90° conn. with LED downward
<b>31</b>	= + 12 V DC line conn. with LED downward
<b>T</b>	<b>12</b> = + 24 V DC 90° conn. with LED downward
	<b>32</b> = + 24 V DC line conn. with LED downward
	<b>91</b> = + 12 V DC for integral electrical connections downward
	<b>92</b> = + 24 V DC for integral electrical connections downward



Weight 52 g  
Minimum pilot pressure 2,5 bar

