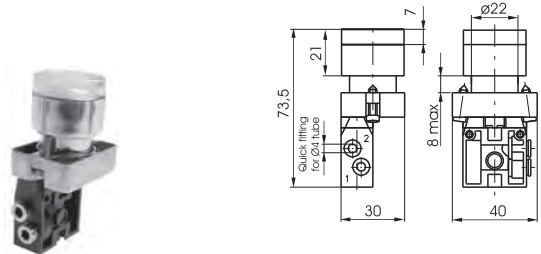


Push button 2 positions (step - step)

Coding: 104. **T**.6.31. **W**. **F**

Operational characteristics			
Fluid	Filtered air. No lubrication needed, if applied it shall be continuous	<b>T</b> TYPE	<b>F</b> FUNCTION (only for 2/2 and 3/2 ways)
Max. working pressure (bar)	10	<b>22</b> = 2 ways, 2 positions	<b>A</b> = Normally Open
Temperature °C	-5 ... +70	<b>32</b> = 3 ways, 2 positions	<b>C</b> = Normally Closed
Flow rate at 6 bar with $\Delta p=1$ (Nl/min)	90	<b>52</b> = 5 ways, 2 positions	
Orifice size (mm)	2.5	CONNECTION TYPE	
Working ports size	Ø4 tube	<b>L</b> = Lateral	
		<b>P</b> = Rear	

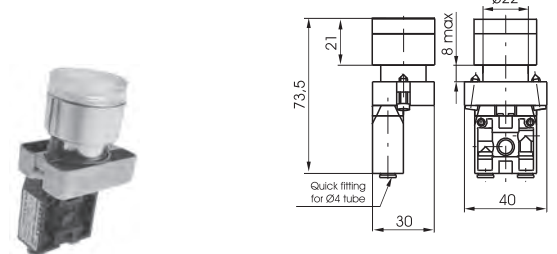
2/2 - 3/2 - Lateral connections



Weight 60 g  
Operating force 18 N

104. **T**.6.31. **L**. **F**

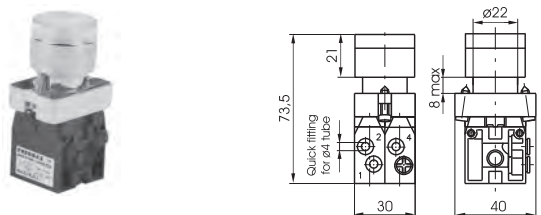
2/2 - 3/2 - Rear connections



Weight 60 g  
Operating force 18 N

104. **T**.6.31. **P**. **F**

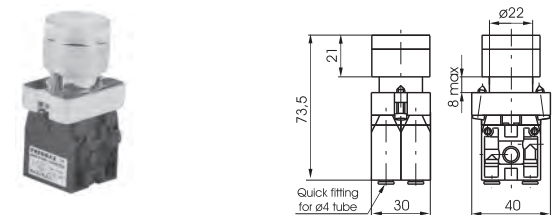
5/2 - Lateral connections



Weight 110 g  
Operating force 30 N

104.52.6.31. **L**

5/2 - Rear connections



Weight 110 g  
Operating force 30 N

104.52.6.31. **P**