



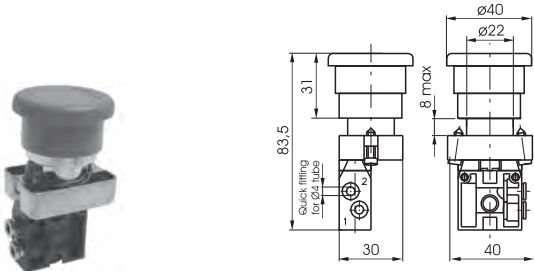
Palm button 2 position

Coding: 104.1.6.25.W.F

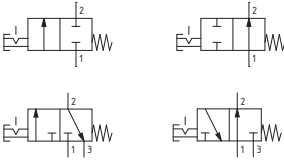
Operational characteristics	
Fluid	Filtered air. No lubrication needed, if applied it shall be continuous
Max. working pressure (bar)	10
Temperature °C	-5 ... +70
Flow rate at 6 bar with $\Delta p=1$ (Nl/min)	90
Orifice size (mm)	2.5
Working ports size	ø4 tube

T	TYPE	F	FUNCTION (only for 2/2 and 3/2 ways)
	22 = 2 ways, 2 positions		A = Normally Open
	32 = 3 ways, 2 positions		C = Normally Closed
	52 = 5 ways, 2 positions		
W	CONNECTION TYPE		
	L = Lateral		
	P = Rear		

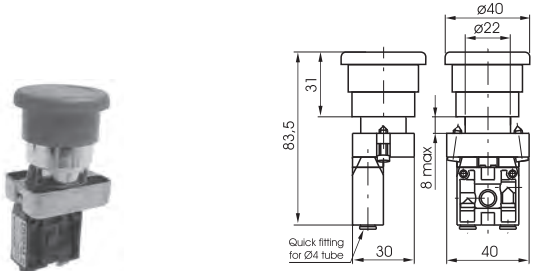
2/2 - 3/2 - Lateral connections



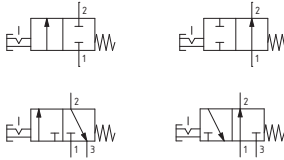
Weight 65 g
Operating force 19 N
Emergency - Rotate to unlock
104.1.6.25.L.F



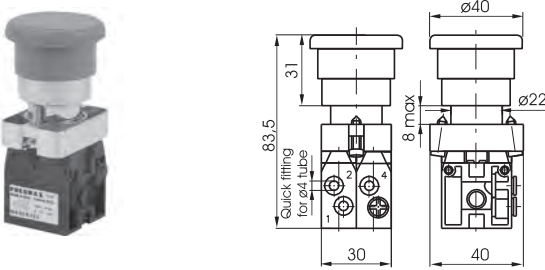
2/2 - 3/2 - Rear connections



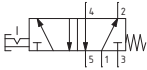
Weight 65 g
Operating force 19 N
Emergency - Rotate to unlock
104.1.6.25.P.F



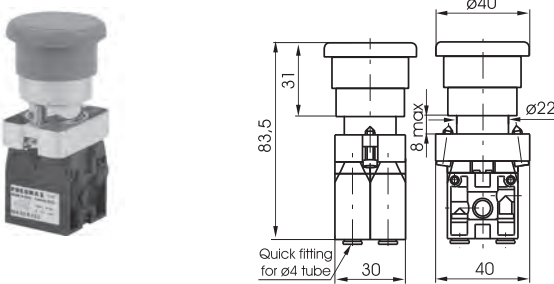
5/2 - Lateral connections



Weight 120 g
Operating force 32 N
Emergency - Rotate to unlock
104.52.6.25.L



5/2 - Rear connections



Weight 120 g
Operating force 32 N
Emergency - Rotate to unlock
104.52.6.25.P

