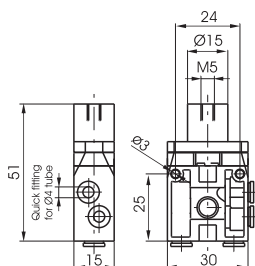
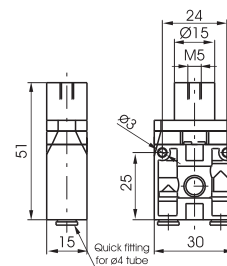
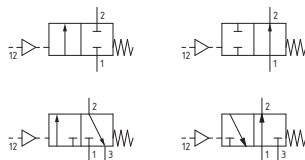


Operational characteristics			
Fluid	Filtered air. No lubrication needed, if applied it shall be continuous	T 22 = 2 ways, 2 positions 32 = 3 ways, 2 positions	F A = Normally Open C = Normally Closed
Max. working pressure (bar)	10		
Temperature °C	-5 ... +50	W L = Lateral P = Rear	
Flow rate at 6 bar with $\Delta p=1$ (l/min)	90		
Orifice size (mm)	2.5		
Working ports size	ø4 tube		
Pilot ports size	M5		



104. **T**.11.1.L.**F**



104. T.11.1.P.F

