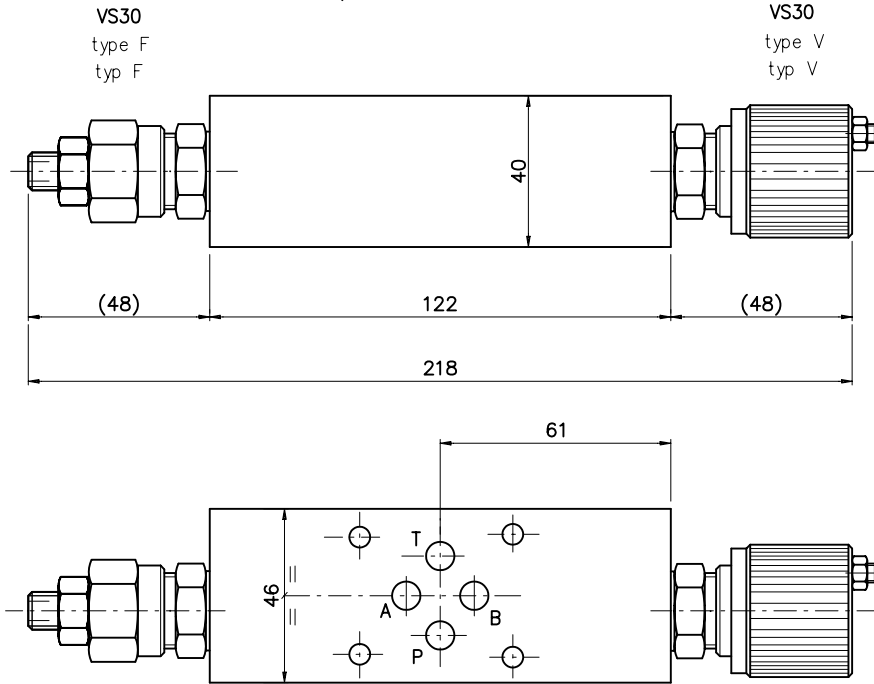


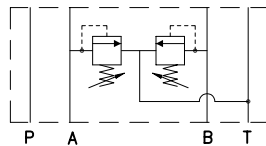
**PRESSURE RELIEF VALVE TYPE EVM103AB...**  
**DRUCKBEGRENZUNGSVENTIL TYP EVM103AB...**

Direct acting pressure relief valve (RV) for modular mounting  
 Druckbegrenzungsventil direktgesteuert (DBV) fuer Modularmontage  
 Weight / Gewicht = 1.6 Kg

TYPE/TYP EVM103AB...



setting/Einstellung AB



Ordering code  
 Bestell-Code

E	V	M	10	3	AB	*	*	*
---	---	---	----	---	----	---	---	---

EUROFLUID — E  
 Valve / Ventil = V — V  
 modular mounting / Modularmontage = M — M  
 version of discharge in T / version mit Ablauf in T = 10 — 10  
 CETOP 3 — 3  
 setting on /Einstellung = AB — AB  
 with RV / mit DBV = X — \*  
 prearranged for RV = Z — \*  
 fuer DBV vorgebohrt — \*

F = by key  
Schlussverstellung

V = Handwheel  
Aluhandrad

Setting type/ Einstellung Typ —> (points to the \* \* \* positions)  
 spring type/ Feder Typ —> (points to the \* \* \* positions)

N.	range/Bereich min-max ( bar )
0	5-50
1	30-100
2	50-210
3	100-350

**VALVES  
VENTILE**