

# Series Industrial in PAINTED STEEL

## Water - Hot water

### 100 bar

swivel  
seals  
hose

St. steel AISI 304  
Viton  
Black synthetic  
rubber

S. 560

S. 540

S. 530

S. 430

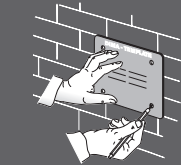
S. 350

S. 300

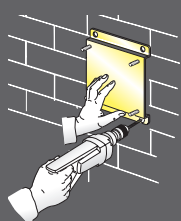


THE HOSE REELS ARE EQUIPPED WITH A UNIVERSAL HOSE STOP; THOSE WITH HOSE ARE PROVIDED WITH A 0,6 m INLET CONNECTION HOSE.

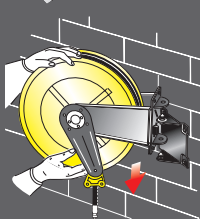
- The template supplied, facilitates drilling of the holes and therefore hose reel fixing.



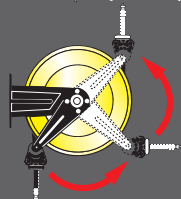
- The quick coupling support (see page 82) that facilitates installation in battery is available on request.



- The quick coupling adjustable support (see page 82) that enables 40° rotation to the right or left of the hose reel is available on request.

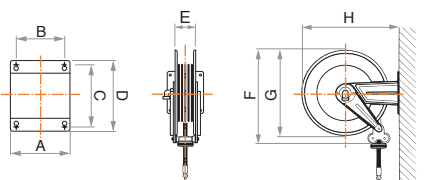


- The adjustable arms can be easily repositioned according to needs (see page 77).



#### OVERALL DIMENSIONS

Series	A	B	C	D	E	F	G	H
300	186	140	196	226	110	355	350	365
350	186	140	196	226	110	400	390	410
430	186	140	196	226	115	450	420	460
530	203	153	220	258	115	550	510	560
540	300	218	228	268	190	550	510	573
560	488	399	238	272	368	522	510	578



Article	Relative capacity	Delivery hose	∅ Hose	Inlet connection	Outlet connection
<b>Series 300</b>					
300/20	60 l/min	without hose	/	F 1/2"G	F 3/8"-1/2"G
300/21	40 l/min	12m (953/13)	3/8"	F 1/2"G	M 3/8"G
300/22	50 l/min	8m (963/7)	1/2"	F 1/2"G	M 1/2"G

N° 1 packing m<sup>3</sup> 0,045 from kg 8 to 13

<b>Series 350</b>					
350/20	60 l/min	without hose	/	F 1/2"G	F 3/8"-1/2"G
350/21	38 l/min	17m (953/18)	3/8"	F 1/2"G	M 3/8"G
350/22	40 l/min	12m (953/13)	3/8"	F 1/2"G	M 3/8"G
350/23	45 l/min	10m (963/9)	1/2"	F 1/2"G	M 1/2"G

N° 1 packing m<sup>3</sup> 0,068 from kg 10 to 17

<b>Series 430</b>					
430/20	75 l/min	without hose	/	F 1/2"G	F 1/2"G
430/21	65 l/min	10m (963/12)	1/2"	F 1/2"G	M 1/2"G
430/22	62 l/min	15m (963/14)	1/2"	F 1/2"G	M 1/2"G

N° 1 packing m<sup>3</sup> 0,086 from kg 14 to 24

<b>Series 530</b>					
530/20	75 l/min	without hose	/	F 1/2"G	F 1/2"G
530/21	60 l/min	20m (963/19)	1/2"	F 1/2"G	M 1/2"G
530/22	57 l/min	25m (963/24)	1/2"	F 1/2"G	M 1/2"G

N° 1 packing m<sup>3</sup> 0,120 from kg 19 to 42

<b>Series 540</b>					
540/20	150 l/min	without hose	/	F 1"G	F 1"G
540/21	140 l/min	15m (983/15)	1"	F 1"G	M 1"G
540/22	120 l/min	15m (973/14)	3/4"	F 1"G	M 3/4"G
540/23	118 l/min	20m (973/19)	3/4"	F 1"G	M 3/4"G
540/25	75 l/min	without hose	/	F 1/2"G	F 1/2"G
540/26	55 l/min	30m (963/29)	1/2"	F 1/2"G	M 1/2"G

N° 1 packing m<sup>3</sup> 0,175 from kg 24 to 50

<b>Series 560</b>					
560/20	150 l/min	without hose	/	F 1"G	F 1"G
560/21	110 l/min	30m (973/29)	3/4"	F 1"G	M 3/4"G
560/22	108 l/min	35m (973/34)	3/4"	F 1"G	M 3/4"G
560/23	105 l/min	40m (973/39)	3/4"	F 1"G	M 3/4"G
560/24	135 l/min	20m (983/19)	1"	F 1"G	M 1"G
560/25	130 l/min	30m (983/29)	1"	F 1"G	M 1"G
560/26	75 l/min	without hose	/	F 1/2"G	F 1/2"G
560/27	50 l/min	40m (963/39)	1/2"	F 1/2"G	M 1/2"G
560/28	47 l/min	50m (963/49)	1/2"	F 1/2"G	M 1/2"G
560/29	42 l/min	60m (963/59)	1/2"	F 1/2"G	M 1/2"G

N° 1 packing m<sup>3</sup> 0,310 from kg 30 to 80