

Series Industrial in STAINLESS STEEL

Water - Hot water

100 bar

swivel
seals
hose

St. steel AISI 304
Viton
Black synthetic
rubber



S. 560

S. 540

S. 530

S. 430

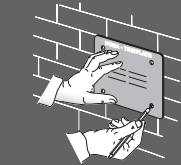
S. 350

S. 300

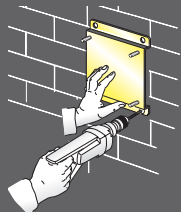


THE HOSE REELS ARE EQUIPPED WITH A UNIVERSAL HOSE STOP; THOSE WITH HOSE ARE PROVIDED WITH A 0,6 m INLET CONNECTION HOSE.

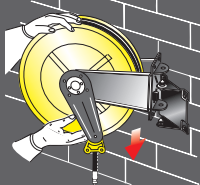
- The template supplied, facilitates drilling of the holes and therefore hose reel fixing.



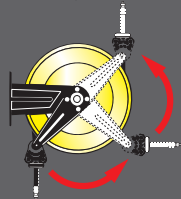
- The quick coupling support (see page 82) that facilitates installation in battery is available on request.



- The quick coupling adjustable support (see page 82) that enables 40° rotation to the right or left of the hose reel is available on request.

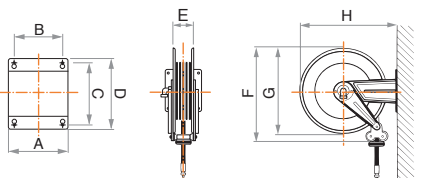


- The adjustable arms can be easily repositioned according to needs (see page 77).



OVERALL DIMENSIONS

Series	A	B	C	D	E	F	G	H
300	186	140	196	226	110	355	350	365
350	186	140	196	226	110	400	390	410
430	186	140	196	226	115	450	420	460
530	203	153	220	258	115	550	510	560
540	300	218	228	268	190	550	510	573
560	488	399	238	272	368	522	510	578



	Article	Relative capacity	Delivery hose	∅ Hose	Inlet connection	Outlet connection
Series 300	302/40	60 l/min	without hose	/	F 1/2"G	F 3/8"-1/2"G
	302/21	40 l/min	12m (953/13)	3/8"	F 1/2"G	M 3/8"G
	302/22	50 l/min	8m (963/7)	1/2"	F 1/2"G	M 1/2"G
		N° 1 packing m ³ 0,045		from kg 8 to 13		

Series 350	352/40	60 l/min	without hose	/	F 1/2"G	F 3/8"-1/2"G
	352/21	38 l/min	17m (953/18)	3/8"	F 1/2"G	M 3/8"G
	352/22	40 l/min	12m (953/13)	3/8"	F 1/2"G	M 3/8"G
	352/23	45 l/min	10m (963/9)	1/2"	F 1/2"G	M 1/2"G
		N° 1 packing m ³ 0,068		from kg 10 to 17		

Series 430	434/20	75 l/min	without hose	/	F 1/2"G	F 1/2"G
	432/21	65 l/min	10m (963/12)	1/2"	F 1/2"G	M 1/2"G
	432/22	62 l/min	15m (963/14)	1/2"	F 1/2"G	M 1/2"G
		N° 1 packing m ³ 0,086		from kg 14 to 24		

Series 530	534/20	75 l/min	without hose	/	F 1/2"G	F 1/2"G
	532/21	60 l/min	20m (963/19)	1/2"	F 1/2"G	M 1/2"G
	532/22	57 l/min	25m (963/24)	1/2"	F 1/2"G	M 1/2"G
		N° 1 packing m ³ 0,120		from kg 19 to 42		

Series 540	544/20	150 l/min	without hose	/	F 1"G	F 1"G
	542/21	140 l/min	15m (983/15)	1"	F 1"G	M 1"G
	542/22	120 l/min	15m (973/14)	3/4"	F 1"G	M 3/4"G
	542/23	118 l/min	20m (973/19)	3/4"	F 1"G	M 3/4"G
	544/25	75 l/min	without hose	/	F 1/2"G	F 1/2"G
	542/26	55 l/min	30m (963/29)	1/2"	F 1/2"G	M 1/2"G
		N° 1 packing m ³ 0,175		from kg 24 to 50		

Series 560	564/20	150 l/min	without hose	/	F 1"G	F 1"G
	562/21	110 l/min	30m (973/29)	3/4"	F 1"G	M 3/4"G
	562/22	108 l/min	35m (973/34)	3/4"	F 1"G	M 3/4"G
	562/23	105 l/min	40m (973/39)	3/4"	F 1"G	M 3/4"G
	562/24	135 l/min	20m (983/19)	1"	F 1"G	M 1"G
	562/25	130 l/min	30m (983/29)	1"	F 1"G	M 1"G
	564/26	75 l/min	without hose	/	F 1/2"G	F 1/2"G
	562/27	50 l/min	40m (963/39)	1/2"	F 1/2"G	M 1/2"G
	562/28	47 l/min	50m (963/49)	1/2"	F 1/2"G	M 1/2"G
562/29	42 l/min	60m (963/59)	1/2"	F 1/2"G	M 1/2"G	
		N° 1 packing m ³ 0,310		from kg 30 to 80		