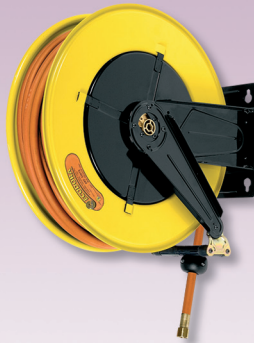
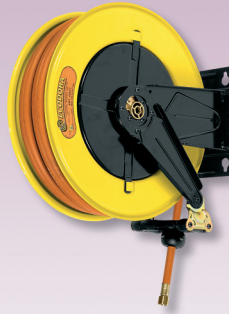
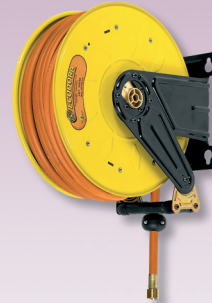
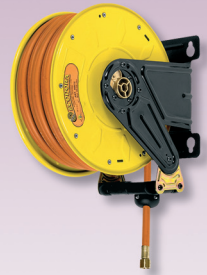


S. 540

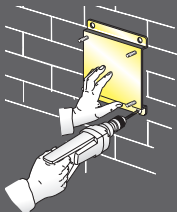
S. 530

S. 430

S. 350

S. 300


THE HOSE REELS ARE EQUIPPED WITH A UNIVERSAL HOSE STOP; THOSE WITH HOSE ARE PROVIDED WITH A 1,5 m INLET CONNECTION HOSE.

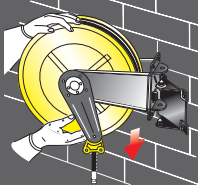
- The template supplied, facilitates drilling of the holes and therefore hose reel fixing.



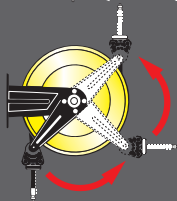
- The quick coupling support (see page 82) that facilitates installation in battery is available on request.



- The quick coupling adjustable support (see page 82) that enables 40° rotation to the right or left of the hose reel is available on request.



- The adjustable arms can be easily repositioned according to needs (see page 77).



	Article	Relative capacity	Delivery hose	∅ Hose	Inlet connection	Outlet connection
Series 300	300/80	800 l/min	without hose	/	M 3/8"G Left	M 3/8"G Left
	300/81	400 l/min	8m (949/8)	8x15	F 3/8"G Left	F 3/8"G Left
	300/82	720 l/min	10m (959/10)	10x17	F 3/8"G Left	F 3/8"G Left

N° 1 packing m³ 0,045 from kg 8 to 13

Series 350	350/80	800 l/min	without hose	/	M 3/8"G Left	M 3/8"G Left
	350/81	350 l/min	15m (949/15)	8x15	F 3/8"G Left	F 3/8"G Left
	350/82	700 l/min	15m (959/15)	10x17	F 3/8"G Left	F 3/8"G Left

N° 1 packing m³ 0,068 from kg 10 to 17

Series 430	430/80	800 l/min	without hose	/	M 3/8"G Left	M 3/8"G Left
	430/81	350 l/min	15m (949/15)	8x15	F 3/8"G Left	F 3/8"G Left
	430/82	320 l/min	20m (949/20)	8x15	F 3/8"G Left	F 3/8"G Left
	430/83	700 l/min	12m (959/12)	10x17	F 3/8"G Left	F 3/8"G Left
	430/84	680 l/min	18m (959/18)	10x17	F 3/8"G Left	F 3/8"G Left

N° 1 packing m³ 0,086 from kg 14 to 24

Series 530	530/80	800 l/min	without hose	/	M 3/8"G Left	M 3/8"G Left
	530/81	300 l/min	24m (949/24)	8x15	F 3/8"G Left	F 3/8"G Left
	530/82	270 l/min	28m (949/28)	8x15	F 3/8"G Left	F 3/8"G Left
	530/83	660 l/min	22m (959/22)	10x17	F 3/8"G Left	F 3/8"G Left
	530/84	630 l/min	27m (959/27)	10x17	F 3/8"G Left	F 3/8"G Left

N° 1 packing m³ 0,120 from kg 19 to 42

Series 540	540/80	800 l/min	without hose	/	M 3/8"G Left	M 3/8"G Left
	540/81	260 l/min	30m (949/30)	8x15	F 3/8"G Left	F 3/8"G Left
	540/82	620 l/min	30m (959/30)	10x17	F 3/8"G Left	F 3/8"G Left

N° 1 packing m³ 0,175 from kg 24 to 50

OVERALL DIMENSIONS

Series	A	B	C	D	E	F	G	H
300	186	140	196	226	110	355	350	365
350	186	140	196	226	110	400	390	410
430	186	140	196	226	115	450	420	460
530	203	153	220	258	115	550	510	560
540	300	218	228	268	190	550	510	573

