

Series Industrial in PAINTED STEEL

Air - Water

20 bar

swivel
seals
hose

Brass
Viton
Polyurethane
Black synthetic rubber

S. 560

S. 540

S. 530

S. 430

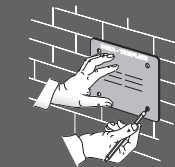
S. 350

S. 300 S. 270

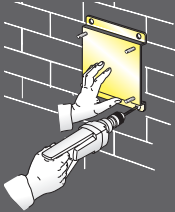


THE HOSE REELS ARE EQUIPPED WITH A UNIVERSAL HOSE STOP; THOSE WITH HOSE ARE PROVIDED WITH A 0,6 m INLET CONNECTION HOSE.

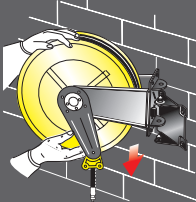
- The template supplied, facilitates drilling of the holes and therefore hose reel fixing.



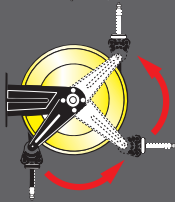
- The quick coupling support (see page 82) that facilitates installation in battery is available on request.



- The quick coupling adjustable support (see page 82) that enables 40° rotation to the right or left of the hose reel is available on request.

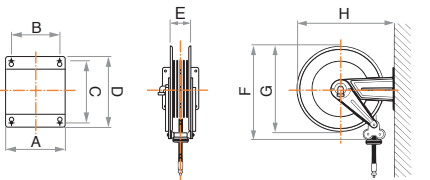


- The adjustable arms can be easily repositioned according to needs (see page 77).



OVERALL DIMENSIONS

Series	A	B	C	D	E	F	G	H
270	186	140	196	226	110	310	300	320
300	186	140	196	226	110	355	350	365
350	186	140	196	226	110	400	390	410
430	186	140	196	226	115	450	420	460
530	203	153	220	258	115	550	510	560
540	300	218	228	268	190	550	510	573
560	488	399	238	272	368	522	510	578



Article	Capacity /min Air-Water	Delivery hose	ø Hose	Inlet connection	Outlet connection
Series 270					
270/10	800 - 35	without hose	/	F 3/8"G	F 3/8"G
270/11	710 - 27	10m (952/10)	3/8"	F 3/8"G	M 3/8"G
270/12	690 - 30	13m (921/13)	PU 10x14,5	F 3/8"G	M 3/8"G
270/13	320 - 18	15m (911/15)	PU 8x12	F 3/8"G	M 1/4"G

N° 1 packing m³ 0,037 from kg 7 to 12

Series 300					
300/10	800 - 35	without hose	/	F 3/8"G	F 3/8"G
300/11	690 - 25	12m (952/12)	3/8"	F 3/8"G	M 3/8"G
300/12	670 - 28	15m (921/15)	PU 10x14,5	F 3/8"G	M 3/8"G
300/13	300 - 15	18m (911/18)	PU 8x12	F 3/8"G	M 1/4"G

N° 1 packing m³ 0,045 from kg 8 to 13

Series 350					
350/10	800 - 35	without hose	/	F 3/8"G	F 3/8"G
350/11	660 - 23	18m (952/18)	3/8"	F 3/8"G	M 3/8"G
350/12	650 - 25	20m (921/20)	PU 10x14,5	F 3/8"G	M 3/8"G
350/13	280 - 13	20m (911/20)	PU 8x12	F 3/8"G	M 1/4"G
350/14	690 - 25	12m (952/12)	3/8"	F 3/8"G	M 3/8"G

N° 1 packing m³ 0,068 from kg 10 to 17

Series 430					
430/10	800 - 50	without hose	/	F 1/2"G	F 1/2"G
430/11	760 - 47	15m (962/15)	1/2"	F 1/2"G	M 1/2"G
430/12	690 - 30	12m (952/13)	3/8"	F 1/2"G	M 3/8"G
430/13	660 - 25	18m (952/19)	3/8"	F 1/2"G	M 3/8"G
430/14	780 - 48	10m (962/10)	1/2"	F 1/2"G	M 1/2"G

N° 1 packing m³ 0,086 from kg 14 to 24

Series 530					
530/10	800 - 50	without hose	/	F 1/2"G	F 1/2"G
530/11	750 - 45	20m (962/20)	1/2"	F 1/2"G	M 1/2"G
530/12	740 - 43	25m (962/25)	1/2"	F 1/2"G	M 1/2"G

N° 1 packing m³ 0,120 from kg 19 to 42

Series 540					
540/10	3000 - 120	without hose	/	F 1"G	F 1"G
540/11	2800 - 100	15m (972/15)	3/4"	F 1"G	M 3/4"G
540/12	2750 - 95	20m (972/20)	3/4"	F 1"G	M 3/4"G
540/13	3000 - 110	15m (982/15)	1"	F 1"G	M 1"G
540/15	800 - 50	without hose	/	F 1/2"G	F 1/2"G
540/16	720 - 40	30m (962/30)	1/2"	F 1/2"G	M 1/2"G

N° 1 packing m³ 0,175 from kg 24 to 50

Series 560					
560/10	3000 - 120	without hose	/	F 1"G	F 1"G
560/11	2700 - 90	30m (972/30)	3/4"	F 1"G	M 3/4"G
560/12	2650 - 87	35m (972/35)	3/4"	F 1"G	M 3/4"G
560/13	2600 - 85	40m (972/40)	3/4"	F 1"G	M 3/4"G
560/14	2950 - 105	20m (982/20)	1"	F 1"G	M 1"G
560/15	2900 - 100	30m (982/30)	1"	F 1"G	M 1"G
560/16	800 - 50	without hose	/	F 1/2"G	F 1/2"G
560/17	700 - 37	40m (962/40)	1/2"	F 1/2"G	M 1/2"G
560/18	680 - 32	50m (962/50)	1/2"	F 1/2"G	M 1/2"G
560/19	660 - 30	60m (962/60)	1/2"	F 1/2"G	M 1/2"G

N° 1 packing m³ 0,310 from kg 30 to 80