



**ABS shock
proof drum**

**in painted
steel or in
AISI 304
stainless
steel**

Industrial hose reel suitable also for out-door workplaces with ABS shock proof drum, available in open or enclosed version with arms and bracket in painted steel or in AISI 304 stainless steel.

 **ECODORA**

CE Made in Italy



The hose reels are a handy solution for problems of space.

- With the hose reel, hose rewinding is quick and safe, for an orderly workplace.
- The hose reel safeguards against wear and possible **breakage** of the hoses themselves.
- Operators work in total security in a clean and tidy place.



● **No disorder**

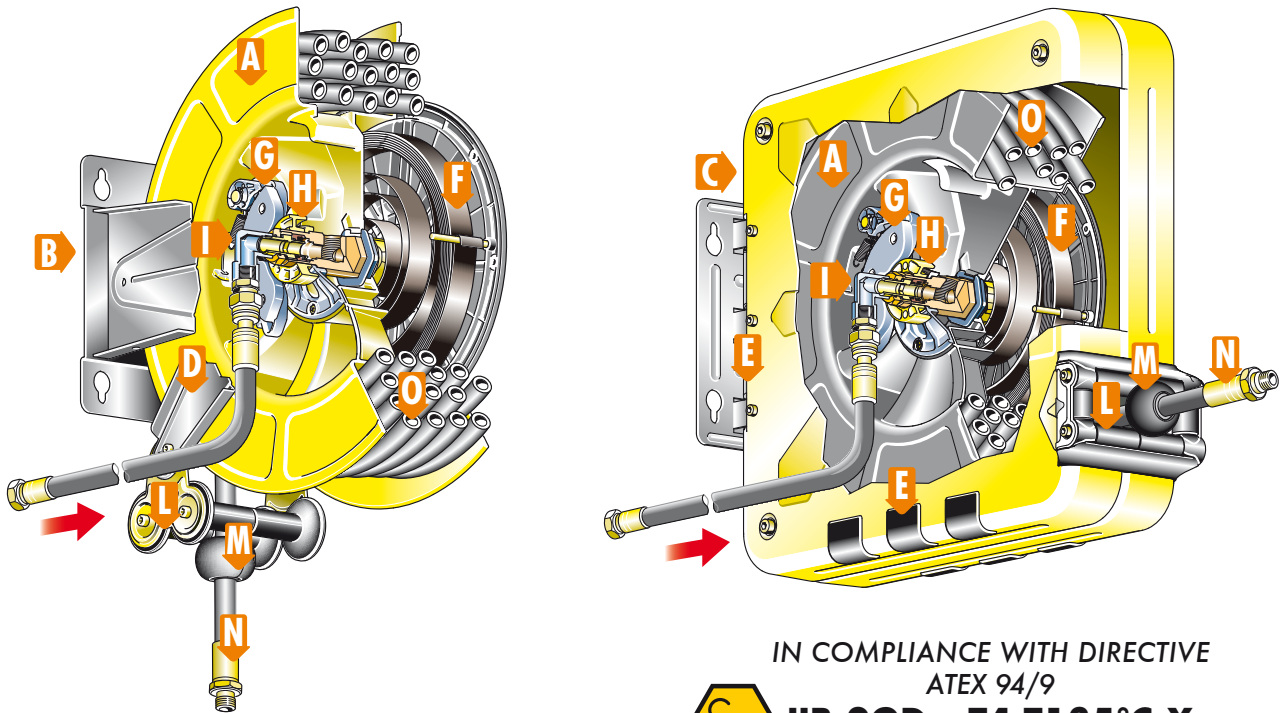
● **No break**

● **No accident**

Choosing a hose reel:

- when choosing a hose reel, it is important to consider the following aspects:




- 1 Type of fluid** to be delivered (water, air, oil, grease, other).
 - 2 Pressure** of fluid to be delivered linked to the feed pressure.
 - 3 Hose length** which is the distance between the hose reel and the places where the fluid is to be delivered.
 - 4 Hose diameter** on which the capacity of the hose itself depends.
- A Fixed or swivelling**, hose reel supplied as fixed. On request it can be supplied with fixed brackets facilitating the installation of several hose reels side by side, or with swivelling brackets enabling the 40° rotation to the right or left of the hose reel.
- B Stainless steel or painted**, this depends on the workplace (closed or open) and the type of hose reel use (protected or exposed to water sprays).
- C Open or enclosed**, the enclosed version is available only for the following fluids: air, oil, antifreeze and grease. The choice is up to the customer.



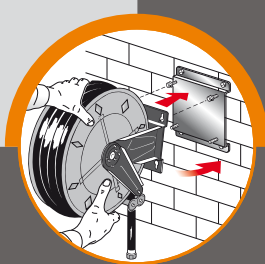
IN COMPLIANCE WITH DIRECTIVE
ATEX 94/9



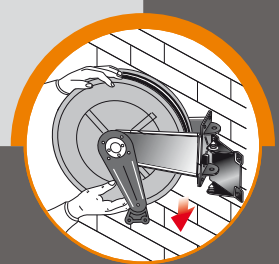
IIB 2GD c T4 T135°C X

- A** Hose reel drum: sturdy and practical in shock resistant ABS
- B** Arms and bracket in painted steel or in AISI 304 stainless steel
- C** Carter and bracket in painted steel
- D** Adjustable arm: to favour hose extraction according to hose reel installation
- E** Wall bracket attachments for alternative positioning
- F** Fully enclosed and protected constant-force automatic rewinding spring
- G** Automatic stopping system: allows the hose to be locked at the required length
- H** Drum support bushings in brass alloy, self-lubricating, effective and corrosion resistant
- I** Fluid passage swivel joint in brass / carbon steel / AISI 304 stainless steel with polyurethane / viton seals
- L** Self-lubricating hose guide rollers: wide multi-way opening
- M** Adjustable hose stop
- N** Galvanized carbon steel BSP connections for air, water, oil / antifreeze, grease
- O** Hose reel capacity:  Ø 17mm max. 21 m  Ø 19,5mm max. 16 m  Ø 22mm max. 14 m

ON REQUEST
Fixed brackets
for quick installation



ON REQUEST
Swivelling brackets
for quick installation



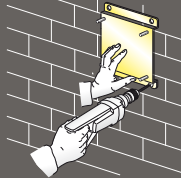
Durable: to prevent corrosion all components are treated or powder-coated finished. Easy to install in every place: wall, floor, ceiling, vehicle, etc.



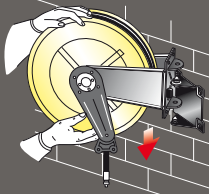
- The template supplied, facilitates drilling of the holes and therefore hose reel fixing.



- The quick coupling support that facilitates installation in battery is available on request.



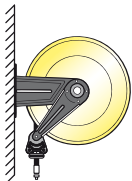
- The quick coupling adjustable support that enables 40° rotation to the right or left of the hose reel is available on request.



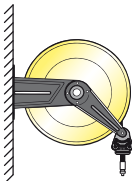
example of installation

The adjustable arms can be easily repositioned according to needs

● Standard installation



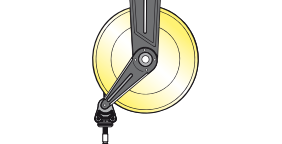
● Wall installation



● Bench installation



● Ceiling installation



20 bar Air-Water

Galvanized BSP joints

BRASS SWIVEL JOINT - "VITON" SEALS

Article	Delivery hose	Ø Hose	Inlet connection	Outlet connection
4430/10	/	/	F 1/2"G	F 1/2"G
4430/11	15m (962/15)	1/2"	F 1/2"G	M 1/2"G
4430/12	12m (952/13)	3/8"	F 1/2"G	M 3/8"G
4430/13	18m (952/19)	3/8"	F 1/2"G	M 3/8"G
4430/14	10m (962/10)	1/2"	F 1/2"G	M 1/2"G

100 bar Water till 130° C

Galvanized BSP joints

STAINLESS STEEL AISI 304 SWIVEL JOINT - "VITON" SEALS

Article	Delivery hose	Ø Hose	Inlet connection	Outlet connection
4430/20	/	/	F 1/2"G	F 1/2"G
4430/21	10m (963/12)	1/2"	F 1/2"G	M 1/2"G
4430/22	15m (963/14)	1/2"	F 1/2"G	M 1/2"G
4431/22	15m (964/15)	1/2"hygienic	F 1/2"G	M 1/2"G

200 bar Water till 130° C

Galvanized BSP joints

STAINLESS STEEL AISI 304 SWIVEL JOINT - "VITON" SEALS

Article	Delivery hose	Ø Hose	Inlet connection	Outlet connection
4430/30	/	/	F 3/8"G	F 1/2"G
4430/31	12m (995/12)	3/8"	F 3/8"G	F 3/8"G
4430/32	18m (995/18)	3/8"	F 3/8"G	F 3/8"G
4431/32	18m (956/18)	3/8"hygienic	F 3/8"G	F 3/8"G

150 bar Oil-Antifreeze and allied products

Galvanized BSP joints

CARBON STEEL SWIVEL JOINT - "POLYURETHANE" SEALS

Article	Delivery hose	Ø Hose	Inlet connection	Outlet connection
4430/40	/	/	F 1/2"G	F 1/2"G
4430/41	10m (963/11)	1/2"	F 1/2"G	M 1/2"G
4430/42	15m (963/15)	1/2"	F 1/2"G	M 1/2"G

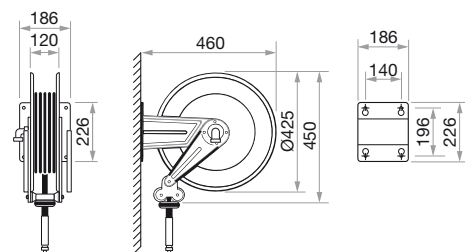
600 bar Grease

Galvanized BSP joints

CARBON STEEL SWIVEL JOINT - "POLYURETHANE" SEALS

Article	Delivery hose	Ø Hose	Inlet connection	Outlet connection
4430/50	/	/	F 3/8"G	F 1/2"G
4430/51	12m (935/13)	1/4"	F 3/8"G	M 1/4"G
4430/52	18m (935/18)	1/4"	F 3/8"G	M 1/4"G
4430/55	10m (957/10)	3/8"	F 3/8"G	M 1/4"G
4430/56	15m (957/15)	3/8"	F 3/8"G	M 1/4"G

OVERALL DIMENSIONS



📦 N° 1 packing m³ 0,086 📦 from kg 14 to 24

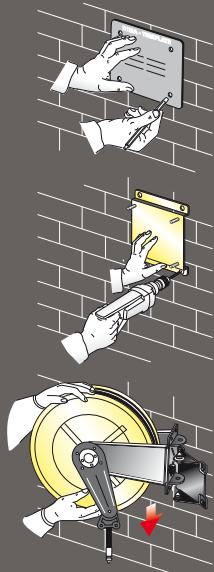
THE HOSE REELS ARE EQUIPPED WITH A UNIVERSAL HOSE STOP; THOSE WITH HOSE ARE PROVIDED WITH A 0,6 M INLET CONNECTION HOSE.



- The template supplied, facilitates drilling of the holes and therefore hose reel fixing.

- The quick coupling support that facilitates installation in battery is available on request.

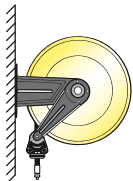
- The quick coupling adjustable support that enables 40° rotation to the right or left of the hose reel is available on request.



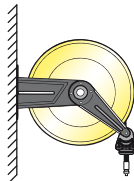
example of installation

The adjustable arms can be easily repositioned according to needs

- Standard installation



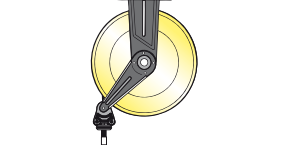
- Wall installation



- Bench installation



- Ceiling installation



20 bar Air-Water

Galvanized BSP joints

BRASS SWIVEL JOINT - "VITON" SEALS

Article	Delivery hose	Ø Hose	Inlet connection	Outlet connection
4432/10	/	/	F 1/2"G	F 1/2"G
4432/11	15m (962/15)	1/2"	F 1/2"G	M 1/2"G
4432/12	12m (952/13)	3/8"	F 1/2"G	M 3/8"G
4432/13	18m (952/19)	3/8"	F 1/2"G	M 3/8"G
4432/14	10m (962/10)	1/2"	F 1/2"G	M 1/2"G

100 bar Water till 130° C

Galvanized BSP joints

STAINLESS STEEL AISI 304 SWIVEL JOINT - "VITON" SEALS

Article	Delivery hose	Ø Hose	Inlet connection	Outlet connection
4434/20	/	/	F 1/2"G	F 1/2"G
4432/21	10m (963/12)	1/2"	F 1/2"G	M 1/2"G
4432/22	15m (963/14)	1/2"	F 1/2"G	M 1/2"G
4433/22	15m (964/15)	1/2"hygienic	F 1/2"G	M 1/2"G

200 bar Water till 130° C

Galvanized BSP joints

STAINLESS STEEL AISI 304 SWIVEL JOINT - "VITON" SEALS

Article	Delivery hose	Ø Hose	Inlet connection	Outlet connection
4434/30	/	/	F 3/8"G	F 1/2"G
4432/31	12m (995/12)	3/8"	F 3/8"G	F 3/8"G
4432/32	18m (995/18)	3/8"	F 3/8"G	F 3/8"G
4433/32	18m (956/18)	3/8"hygienic	F 3/8"G	F 3/8"G

150 bar Oil-Antifreeze and allied products

Galvanized BSP joints

STEEL AISI 304 SWIVEL JOINT - "VITON" SEALS

Article	Delivery hose	Ø Hose	Inlet connection	Outlet connection
4434/20	/	/	F 1/2"G	F 1/2"G
4432/41	10m (963/11)	1/2"	F 1/2"G	M 1/2"G
4432/42	15m (963/15)	1/2"	F 1/2"G	M 1/2"G

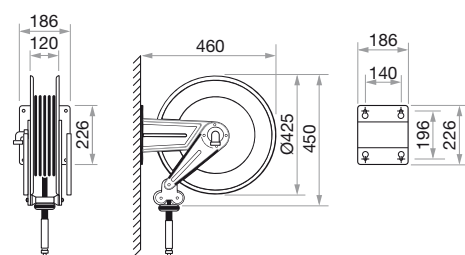
600 bar Grease

Galvanized BSP joints

CARBON STEEL SWIVEL JOINT - "POLYURETHANE" SEALS

Article	Delivery hose	Ø Hose	Inlet connection	Outlet connection
4432/50	/	/	F 3/8"G	F 1/2"G
4432/51	12m (935/13)	1/4"	F 3/8"G	M 1/4"G
4432/52	18m (935/18)	1/4"	F 3/8"G	M 1/4"G
4432/55	10m (957/10)	3/8"	F 3/8"G	M 1/4"G
4432/56	15m (957/15)	3/8"	F 3/8"G	M 1/4"G

OVERALL DIMENSIONS



N° 1 packing m³ 0,086
 from kg 14 to 24

THE HOSE REELS ARE EQUIPPED WITH A UNIVERSAL HOSE STOP; THOSE WITH HOSE ARE PROVIDED WITH A 0,6 M INLET CONNECTION HOSE.

Painted steel enclosed industrial hose reel with ABS shock proof drum Series 440

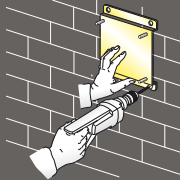


This series includes a range of **enclosed hose reels, with ABS shock proof drum** and painted steel carter designed to be used in those sectors that due to environmental conditions, technical or aesthetical reasons require enclosed hose reel application.

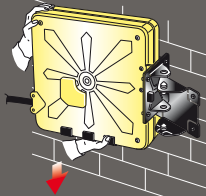
- The template supplied, facilitates drilling of the holes and therefore hose reel fixing.



- The quick coupling support that facilitates installation in battery is available on request.



- The quick coupling adjustable support that enables 40° rotation to the right or left of the hose reel is available on request.



20 bar Air-Water			Galvanized BSP joints	
BRASS SWIVEL JOINT - "VITON" SEALS				
Article	Delivery hose	Ø Hose	Inlet connection	Outlet connection
4440/10	/	/	F 1/2"G	F 1/2"G
4440/11	15m (962/15)	1/2"	F 1/2"G	M 1/2"G
4440/12	18m (952/19)	3/8"	F 1/2"G	M 3/8"G
4440/13	10m (962/10)	3/8"	F 1/2"G	M 3/8"G
4440/14	15m (962/15)	1/2"	F 1/2"G	M 1/2"G

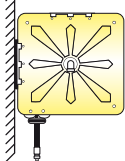
150 bar Oil-Antifreeze and allied products			Galvanized BSP joints	
CARBON STEEL SWIVEL JOINT - "POLYURETHANE" SEALS				
Article	Delivery hose	Ø Hose	Inlet connection	Outlet connection
4440/40	/	/	F 1/2"G	F 1/2"G
4440/41	10m (963/11)	1/2"	F 1/2"G	M 1/2"G
4440/42	15m (963/15)	1/2"	F 1/2"G	M 1/2"G

600 bar Grease			Galvanized BSP joints	
CARBON STEEL SWIVEL JOINT - "POLYURETHANE" SEALS				
Article	Delivery hose	Ø Hose	Inlet connection	Outlet connection
4440/50	/	/	F 3/8"G	F 1/2"G
4440/51	12m (935/13)	1/4"	F 3/8"G	M 1/4"G
4440/52	18m (935/18)	1/4"	F 3/8"G	M 1/4"G
4440/55	10m (957/10)	3/8"	F 3/8"G	M 1/4"G
4440/56	15m (957/15)	3/8"	F 3/8"G	M 1/4"G

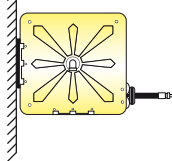
example of installation

It is possible to fix wall bracket on different side according to needs

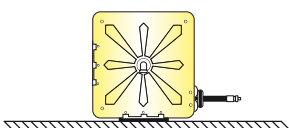
● Standard installation



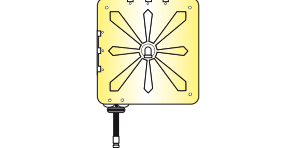
● Wall installation



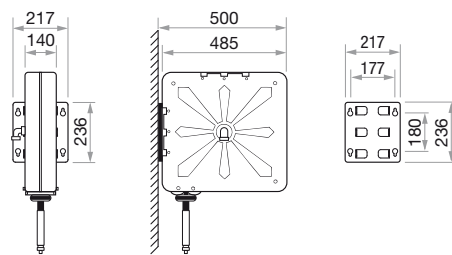
● Bench installation



● Ceiling installation



OVERALL DIMENSIONS



📦 N° 1 packing m³ 0,111 📊 from kg 24 to 29

THE HOSE REELS ARE EQUIPPED WITH A UNIVERSAL HOSE STOP; THOSE WITH HOSE ARE PROVIDED WITH A 0,6 M INLET CONNECTION HOSE.

Modular drip-tray for hose reel



Art. 900
Modular drip-tray for hose reel: equipped with gun hook and removable tray. Indispensable, applied under any hose reel for holding the gun, and for keeping the wall and place clean and safe.



Art. 430/08
Latch mechanism protective cover rack side hose reels Serie 430.

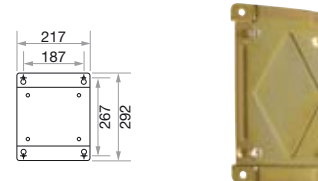
Fixed brackets for quick installation available on request.



Art. 430/01
Fixed bracket in steel for fixed hose reels in painted steel Series 430.



Art. 430/02
Fixed bracket in AISI 304 stainless steel for fixed hose reels in stainless steel, Series 430.

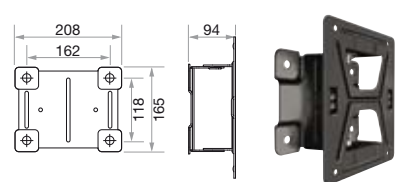


Art. 440/01
Fixed bracket in steel for fixed enclosed hose reels in painted steel Series 440.



● The **quick coupling support** that facilitates hooking of the single hose reel and optimises its installation in battery (i.e. with several hose reels side by side) is available on request.

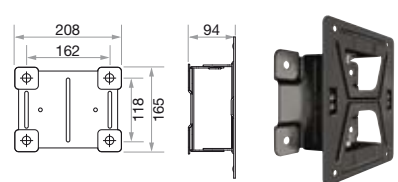
Swivelling brackets for quick installation available on request.



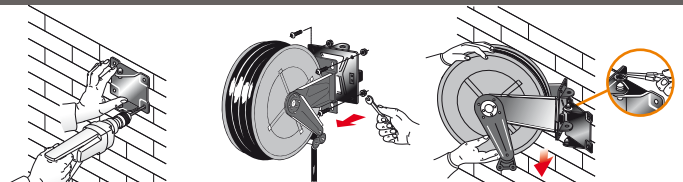
Art. 430/05
Swivelling brackets in steel for fixed hose reels in painted steel Series 430.



Art. 430/06
Swivelling brackets in AISI 304 stainless steel for fixed hose reels in stainless steel Series 430.



Art. 440/05
Swivelling brackets in steel for fixed enclosed hose reels in painted steel Series 440.



● The **quick coupling adjustable support** facilitates hose reel installation and enables 40° rotation to the right or left or locking in fixed position at 0° by means of clamping with two screws is available by request.



Ecodora produces its wide range of hose reels for fluids.

Automatic with constant strength spring, open and enclosed, fixed and swivelling versions available, made in painted steel, stainless steel, stainless steel AISI 304 and in composite materials.

Ecodora hose reels are highly versatile and can be used for most applications including industries, workshops, service stations, garages, agriculture, building, and many others, for transferring fluids such as: **oil, air, water, grease, oxygen-acetylene, fuel, gas, etc.**



aviation



agriculture



building



foundries



armed forces



marine



mining



woodworking



general industries



food industries



service stations



oil-refinery

CE Made in Italy

ECODORA s.r.l.

36022 S. Zeno di Cassola (VI)
Via Marangoni, 33 - Italy

All rights reserved to Ecodora s.r.l.

Authorized dealer



Tel +39 0424 - 570891
Fax +39 0424 - 571354



info@ecodora.com
www.ecodora.com