

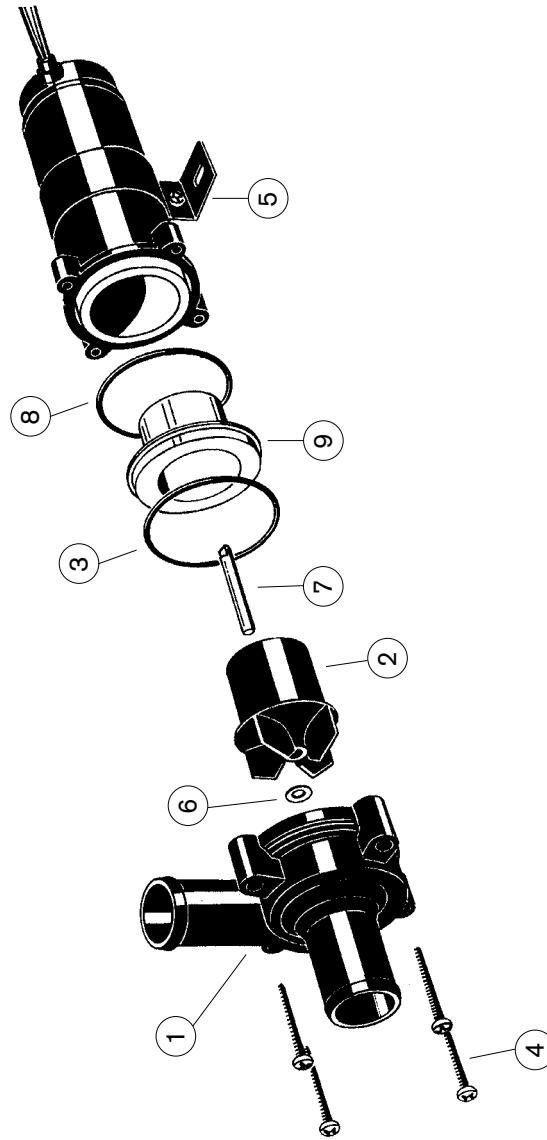
# *Circulating Pumps*

## Circulating Pumps - CM10P7-1 and CM30P7-1

Part no.	Pump type	1 Body cpl	2 Impeller cpl	5 Motor bracket cpl	8 Joint	9 Magnet housing
10-24501-03	CM10P7-1 12 V Dia 16	09-46549	09-46551	36-503-023	01-46552	01-35733
10-24501-04	CM10P7-1 24 V Dia 16	09-46549	09-46551	36-503-023	01-46552	01-35733
10-24502-03	CM10P7-1 12 V Dia 20	09-46550	09-46551	36-503-023	01-46552	01-35733
10-24502-04	CM10P7-1 24 V Dia 20	09-46550	09-46551	36-503-023	01-46552	01-35733
10-24504-03	CM30P7-1 12 V Dia 20	09-46550	09-46551	36-503-023	01-46552	01-35733
10-24504-04	CM30P7-1 24 V Dia 20	09-46550	09-46551	36-503-023	01-46552	01-35733

Body cpl includes body (1), o-ring (pos 3) and 4 screws (pos 4)

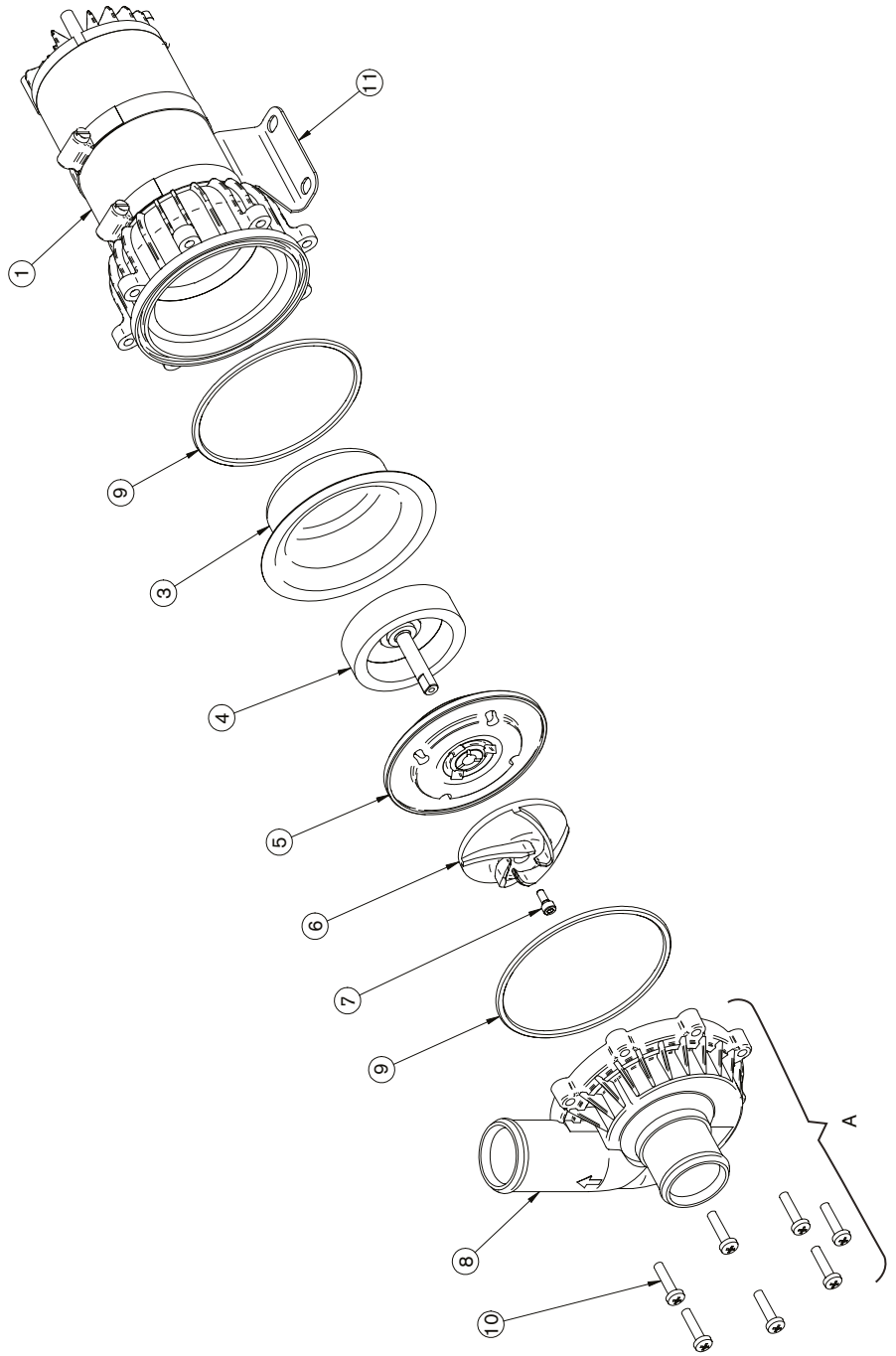
Impeller cpl includes impeller (pos 2), washer (pos 6) and shaft (pos 7)



## Circulating Pumps - CM90P7-1

Part no.	Pump type	A	Body cpl	11	Motor bracket cpl	9	O-ring	3	Magnet housing	6	Impeller	7	Screw	5	Middle part
10-24664-01	CM90P7-1 12V	09-24659	09-36049	09-36049	0.2173.099	01-36024	01-35162	01-45749	01-36027-1	Dia 38					
10-24664-02	CM90P7-1 24V	09-24659	09-36049	09-36049	0.2173.099	01-36024	01-35162	01-45749	01-36027-1	Dia 38					

Body cpl includes body (8), o-ring (pos 9) and 7 screws (pos 10)



### Circulating Pumps - C090P5-1

Part no.	Pump type	Body cpl	Flange	3 Mech seal	4 Middle part	5 O-ring	6 Impeller	7 Screw	8 Screw	9 Screw	10 Washer	11 Washer	12 Washer	13 Motor
10-24190-1	C090P5-1 12V	09-46283	01-24193	09-0.2247.010	01-24192	0.2173.457	01-35162	01-45749	0.0319.500	0.0278.037	01-45601	0.0350.115	0.0352.104	01-24537-01
10-24190-2	C090P5-1 24V	09-46283	01-24193	09-0.2247.010	01-24192	0.2173.457	01-35162	01-45749	0.0319.500	0.0278.037	01-45601	0.0350.115	0.0352.104	01-24537-02
10-24190-3	C090P5-1 32V	09-46283	01-24193	09-0.2247.010	01-24192	0.2173.457	01-35162	01-45749	0.0319.500	0.0278.037	01-45601	0.0350.115	0.0352.104	01-24537-03

Body cpl includes body (1), o-ring (pos 5) and 5 screws (pos 7)

