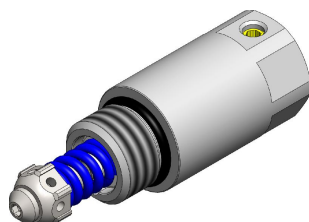


IRRO.M18 VALVE SERIES

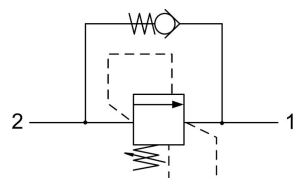
METRIC Insert - 420 bar

Direct acting with anti-cavitation

Poppet type



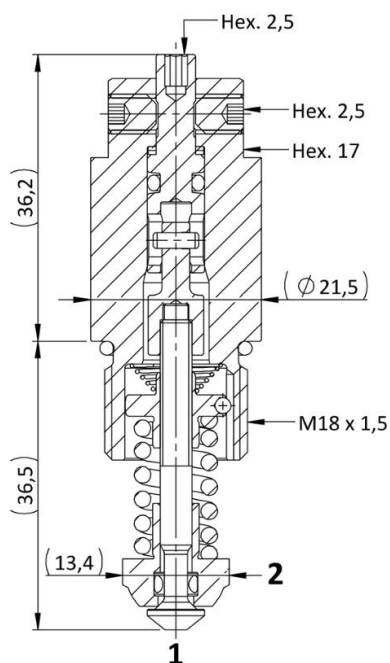
HYDRAULIC SYMBOL



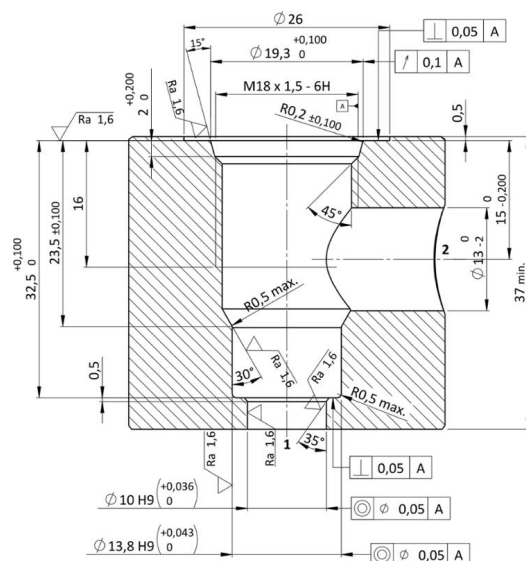
DESCRIPTION

The IRR valve combines in one compact insert cartridge the typical function of shock relief valve and anticavitation through the check valve. In the pressure relief function it's a side-in nose-exhaust valve, with very low pressure rise thanks to the smart deflector design. When the pressure at the high pressure inlet (2) reaches the valve setting, the valve starts to open to tank (1). In the free reverse flow function a very light bias spring allows for ease of flow passage from nose to side (1 to 2). High precision machining guarantees quick response to load changes, limited hysteresis and reduced internal and external leakage.

CROSS SECTION



CAVITY VH002



TECHNICAL DATA

MAXIMUM OPERATING PRESSURE	420 bar
MAXIMUM FLOW	60 l/min
SETTING PRESSURE	see table below
ANTI-CAV CRACKING PRESSURE	<0,5 bar
MAXIMUM INTERNAL LEAKAGE	1 cm ³ / min at 80 % of nominal set point
EXTERNAL COMPONENT TREATMENT	Zn/Fe - standard (96h) Zn/Ni (720h) (Upon customer request)
O-RING TEMPERATURE RANGE	-30° C to 110° C (standard sealing NBR - BUNA - N) -35° C to 140° C (HNBR - Upon customer request) -23° C to 225° C (FKM - Upon customer request)
OIL TEMPERATURE RANGE	-30° C to 110° C
PRESSURE SETTINGS ESTABLISHED	10 l/min
RESEAT PRESSURE	nominal 90% of cracking pressure
FLUIDS	Mineral - based or synthetics with lubricating properties
VISCOSITIES	7,4 to 420 cSt
FILTRATION	20/18/15 ISO 4406 (maximum filtration admitted)
ORIENTATION	No restrictions
INSTALLATION TORQUE	35-40 Nm Hex. 17
NUT TIGHTENING TORQUE	2-4 Nm Hex. 2,5
TECH. SPEC. FOR CHARACTERIZATION	see page 807
OIL TESTING CONDITIONS	ISO VG 46 cSt
SEAL KIT CODE	SK.005 (standard sealing NBR-BUNA-N)
COINING KIT	CK.002
WEIGHT	0,120 kg

ORDERING CODE

I R R O

VALVE BASIC CODE

M 1 8

MARKING

0 = Standard factory marking.
Customized marking can be done upon request.

0 * * *

SETTING PRESSURE IN [BAR]

Standard setting are multiple of 5 bars.

SIZE

METRIC M18x1,5

BIAS SPRING OPTIONS

Spring model code	Setting pressure range (bar)
N	20-70
B	71-130
G	131-210
V	211-280
W	281-350
R	351-420

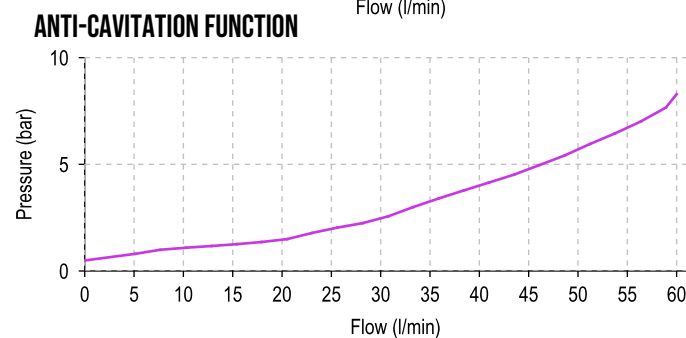
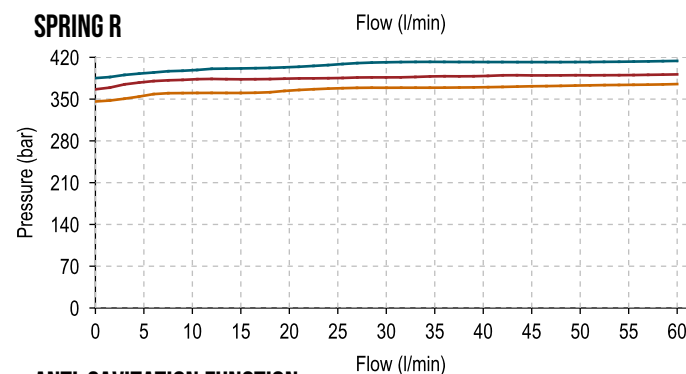
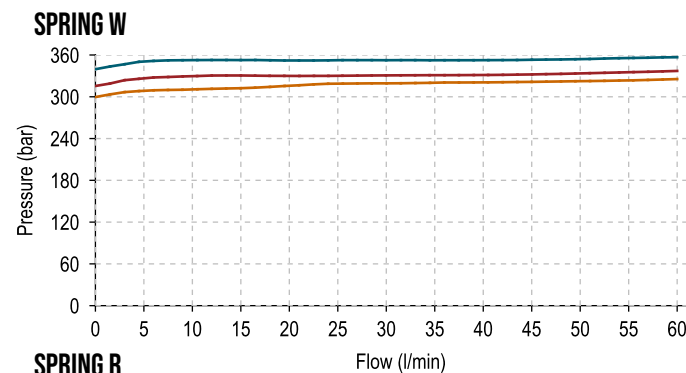
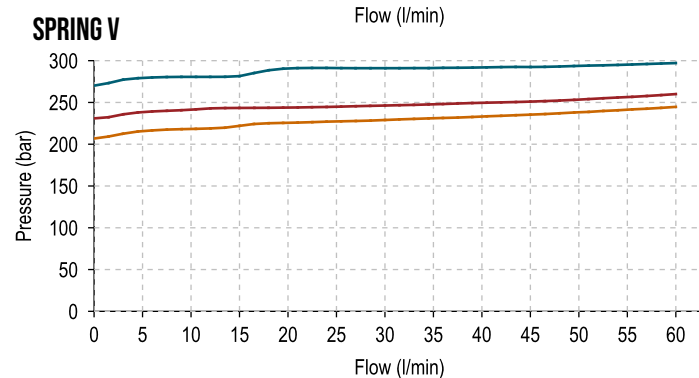
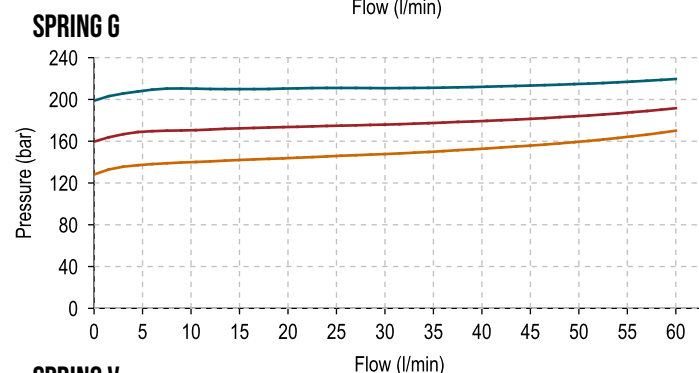
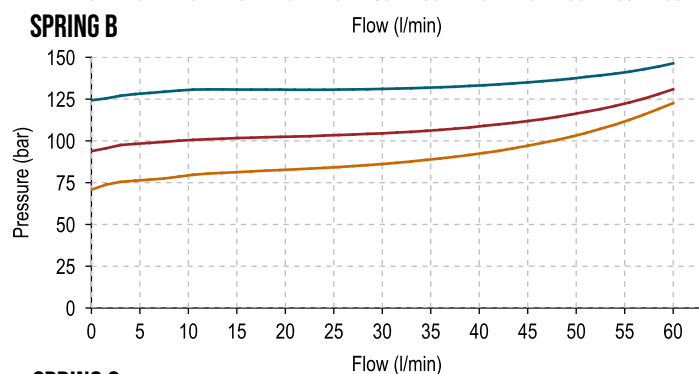
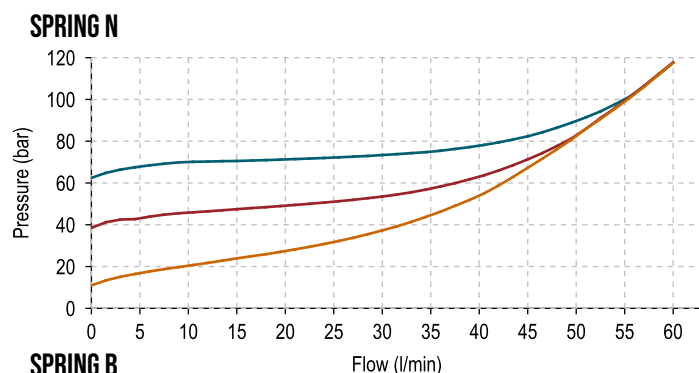
IRRO.M18 SPRINGS' GRAPHS

The performance chart illustrates flow handling capacity for each spring bias options.

p/Q curves are recorded at T_{Oil} = 40°C and 46 cSt.

LEGEND

- Maximum setting pressure range
- Medium setting pressure range
- Minimum setting pressure range



— 1vs2 (Anti-cavitation function)