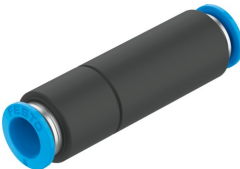


Check valve H-QS-6

Part number: 153463



Data sheet

[General operating condition](#)

Feature	Value
Valve function	Non-return function
Pneumatic connection, port 1	QS-6
Pneumatic connection, port 2	QS-6
Type of mounting	In-line installation
Standard nominal flow rate (standardised to DIN 1343)	282 l/min
Operating pressure	-1 bar ... 10 bar
Ambient temperature	0 °C ... 60 °C
Material housing	Anodised aluminium
Housing colour	Black
Operating medium	Compressed air to ISO 8573-1:2010 [7:-:-]
Symbol	00991455
Min. diff. pressure, opening	0.1 bar
Min. diff. pressure, closing	0.2 bar
Note on operating and pilot medium	Lubricated operation possible (in which case lubricated operation will always be required)
LABS (PWIS) conformity	VDMA24364-B1/B2-L
Product weight	10 g
Note on materials	RoHS-compliant