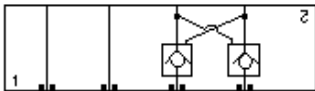
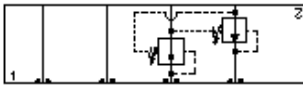


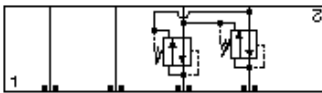
Counterbalance, On A and B, Cross-Piloted



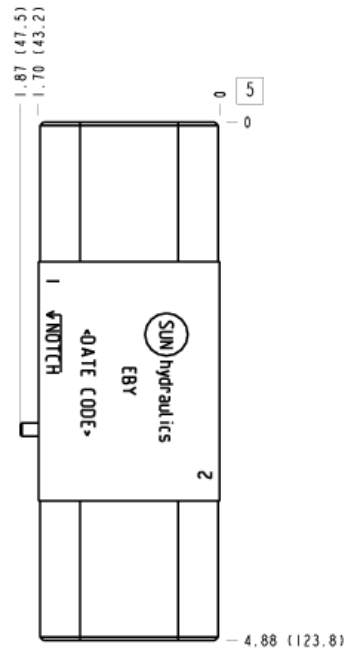
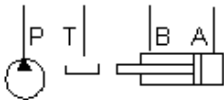
Pilot Operated Check, On A and B, Cross-Piloted



Reducing, On A and B drained to opposite port



Reducing/Relieving, On A and B drain to opposite port



TECHNICAL DATA

Body Type	Sandwich
Interface	ISO 03
Body Features	On A and B with cross pilot
Stack Height	44,5 mm
Seal Plate Included (see notes)	Yes
Open Cavities	2
Cavity	T-11A
Model Weight	0.48 kg.

NOTES

- Stack height value in technical data table includes seal retainer plate.
- Customer to install locating pin according to functional orientation required.
- Important:** Carefully consider the maximum system pressure. The pressure rating of the manifold is dependent on the manifold material, with the port type/size a secondary consideration. Manifolds constructed of aluminum are not rated for pressures higher than 3000 psi (210 bar), regardless of the port type/size specified.

INCLUDED COMPONENTS

Part	Description	Quantity
500-001-012	O-Ring	4
700-002	Seal Plate	1
811-001-006	Pin	1
850-004-250	Plug	2

CONFIGURATION OPTIONS

Model Code Example: EBY

MODIFIER

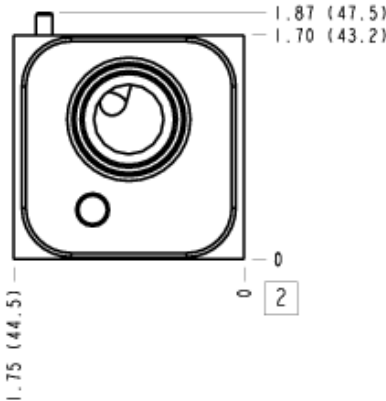
6061-T651 Aluminum, Buna-N
<i>/11</i> 6061-T651 Aluminum, Buna-N, Clear Anodize - Per MIL SPEC 8625F Type II, Class I
<i>/10</i> 6061-T651 Aluminum, Buna-N, Black Anodize - Per MIL SPEC 8625F Type II, Class II
<i>/V</i> 6061-T651 Aluminum, Viton
<i>/16</i> 6061-T651 Aluminum, Viton, Clear Anodize - Per MIL SPEC 8625F Type II, Class I
<i>/15</i> 6061-T651 Aluminum, Viton, Black Anodize - Per MIL SPEC 8625F Type II, Class II
<i>/S</i> 65-45-12 Ductile Iron, Buna-N, Dewatering Oil
<i>/S4</i> 65-45-12 Ductile Iron, Buna-N, Chem. Black
<i>/S3</i> 65-45-12 Ductile Iron, Buna-N, Trivalent Clear Zinc with Top Sealer
<i>/Y</i> 65-45-12 Ductile Iron, Viton, Dewatering Oil
<i>/Y4</i> 65-45-12 Ductile Iron, Viton, Chem. Black
<i>/Y3</i> 65-45-12 Ductile Iron, Viton, Trivalent Clear Zinc with Top Sealer

MANIFOLD FACES

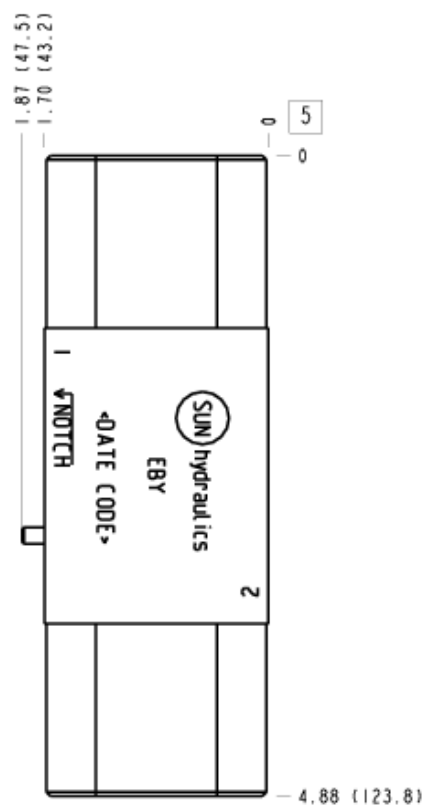
FACE GRID

1	2	3	4
5	6	7	8
9	10	11	12

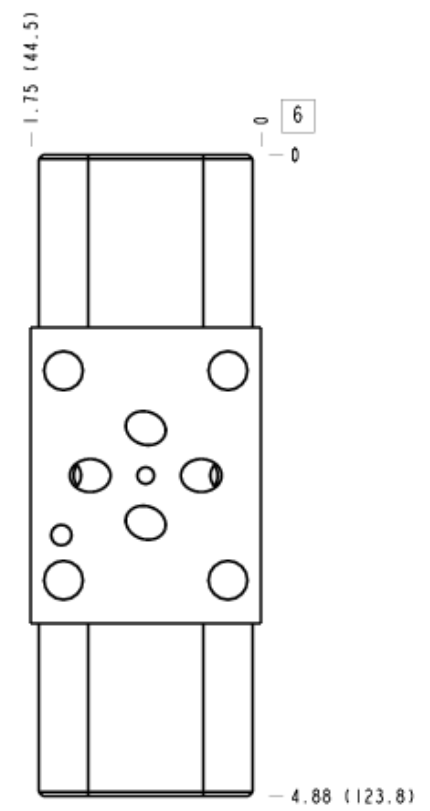
Face 2



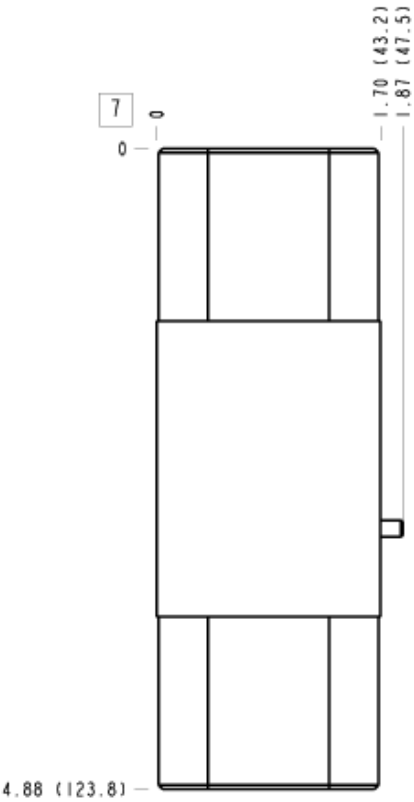
Face 5



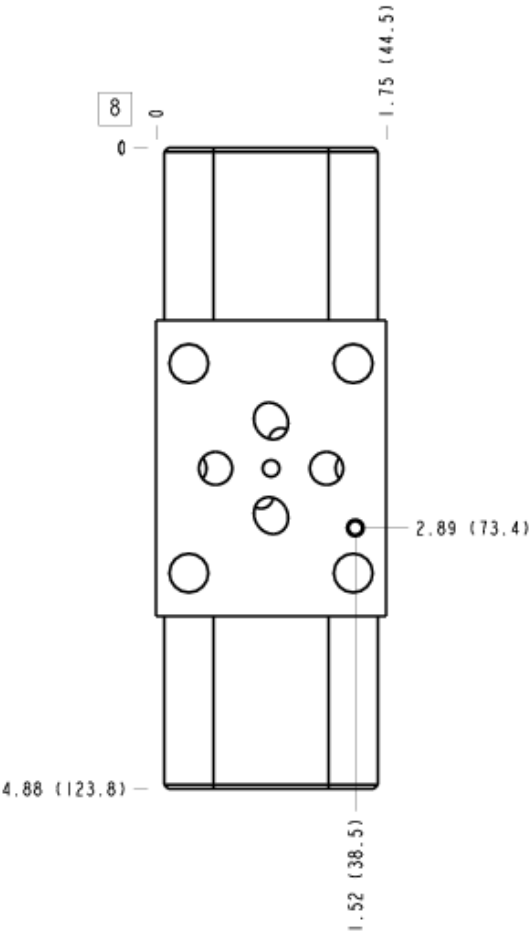
Face 6



Face 7



Face 8



Face 10

