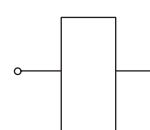
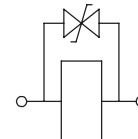


- Wire insulation class.....H (>185°C)
- ED.....100%
- Coil power at 20° C.....24 W
- Ambient temperature.....-20 +40° C
- Weight.....0,28 Kg

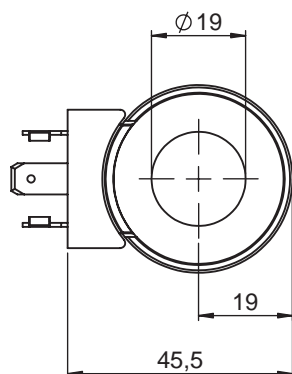
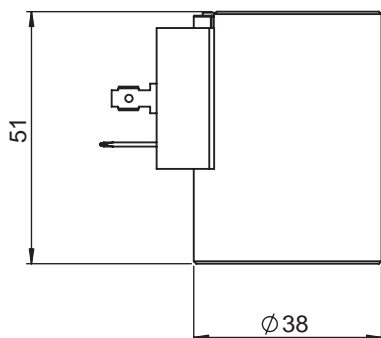
ELECTRIC CIRCUITS



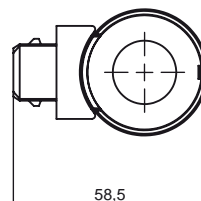
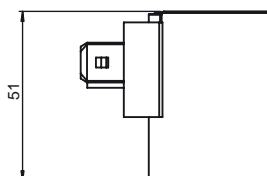
STANDARD



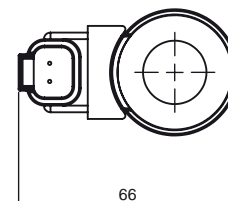
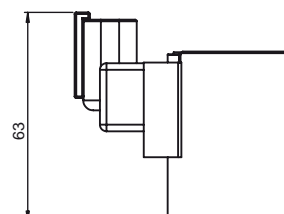
WITH DIODE
(BI-DIRECTIONAL)



AMP - JUNIOR



DEUTSCH DT4



319

| CONNECTOR | PROTECTION CLASS | COIL THERMAL INSULATION CLASS | VOLTAGE [V] | RESISTANCE [Ω] | CIRCUIT | ORDERING CODE |
|--------------|------------------|-------------------------------|-------------|----------------|------------|------------------|
| DIN 43650 | IP65* | H | 12 V dc | 6,8 | STANDARD | 098011190 |
| DIN 43650 | IP65* | H | 24 V dc | 24 | STANDARD | 098012190 |
| DIN 43650 | IP65* | H | 26 V dc | 27,1 | STANDARD | 098012191 |
| DIN 43650 | IP65* | H | 220 V Rac** | 1470 | STANDARD | 098016190 |
| DEUTSCH DT 4 | IP67 | F | 12 V dc | 6,8 | WITH DIODE | 098111190 |
| DEUTSCH DT 4 | IP67 | F | 24 V dc | 24 | WITH DIODE | 098112190 |
| AMP - JUNIOR | IP65* | F | 12 V dc | 6,8 | WITH DIODE | 098211190 |
| AMP - JUNIOR | IP65* | F | 24 V dc | 24 | WITH DIODE | 098212190 |

* Protection index with standard connector

** Rectifier not included - Power 25W

