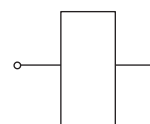


PROPORTIONAL COIL - TUBE Ø 19

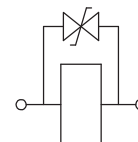
36 W

- Wire insulation class.....H (>185°C)
- ED.....100%
- Coil power at 20° C.....36 W
- Max current at 24 V dc.....0,9 A
- Max current at 12 V dc.....1,8 A
- Ambient temperature.....-20 +40° C
- Weight.....0,28 Kg

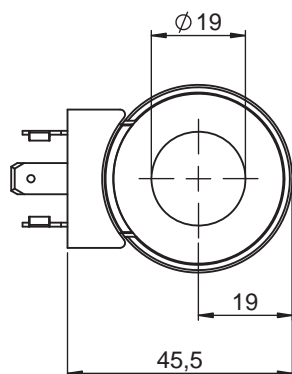
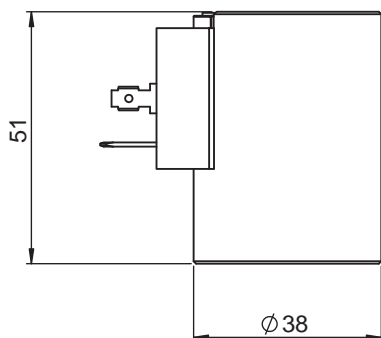
ELECTRIC CIRCUITS



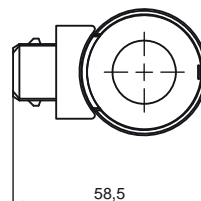
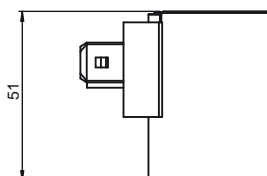
STANDARD



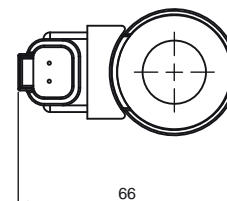
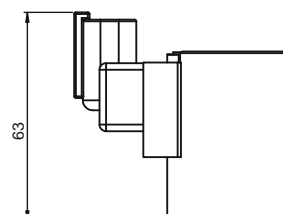
WITH DIODE  
(BI-DIRECTIONAL)



AMP - JUNIOR



DEUTSCH DT4



CONNECTOR	PROTECTION CLASS	COIL THERMAL INSULATION CLASS	VOLTAGE [V]	RESISTANCE [Ω]	CIRCUIT	ORDERING CODE
DIN 43650	IP65*	H	12 V dc	3,9	STANDARD	<b>098001190</b>
DIN 43650	IP65*	H	24 V dc	14,5	STANDARD	<b>098002190</b>
DEUTSCH DT 4	IP67	F	12 V dc	3,9	WITH DIODE	<b>098101190</b>
DEUTSCH DT 4	IP67	F	24 V dc	14,5	WITH DIODE	<b>098102190</b>
AMP - JUNIOR	IP65*	F	12 V dc	3,9	WITH DIODE	<b>098201190</b>
AMP - JUNIOR	IP65*	F	24 V dc	14,5	WITH DIODE	<b>098202190</b>

\* Protection index with standard connector