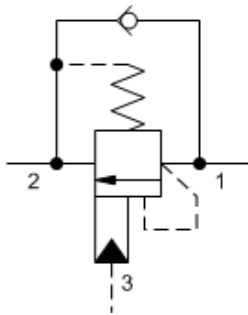
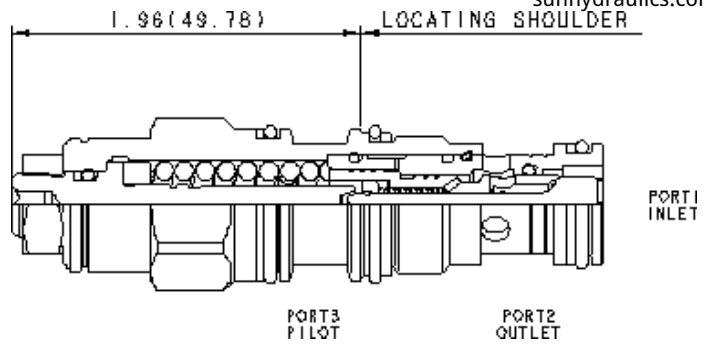


3-Port Non-vented



3-Port Non-vented, Fixed Setting



Counterbalance valves with pilot assist are meant to control an overrunning load. The check valve allows free flow from the directional valve (port 2) to the load (port 1) while a direct-acting, pilot-assisted relief valve controls flow from port 1 to port 2. Pilot assist at port 3 lowers the effective setting of the relief valve at a rate determined by the pilot ratio.

Other names for this valve include motion control valve and over-center valve.

TECHNICAL DATA

NOTE: DATA MAY VARY BY CONFIGURATION. SEE CONFIGURATION SECTION.

| | |
|---|-------------------------|
| Cavity | T-11A |
| Series | 1 |
| Capacity | 20 L/min. |
| Pilot Ratio | 2:1 |
| Maximum Recommended Load Pressure at Maximum Setting | 215 bar |
| Maximum Setting | 280 bar |
| Factory Pressure Settings Established at | 30 cc/min. |
| Maximum Valve Leakage at Reseat | 0,3 cc/min. |
| Adjustment - No. of CCW Turns from Min. to Max. Setting | 3.75 |
| Operating Characteristic | Restrictive |
| Reseat | >85% of setting |
| Valve Hex Size | 22,2 mm |
| Valve Installation Torque | 41 - 47 Nm |
| Adjustment Screw Internal Hex Size | 4 mm |
| Locknut Hex Size | 15 mm |
| Locknut Torque | 9 - 10 Nm |
| Seal kit - Cartridge | Buna: 990011007 |
| Seal kit - Cartridge | Polyurethane: 990011002 |
| Seal kit - Cartridge | Viton: 990011006 |
| Model Weight | 0.16 kg. |

CONFIGURATION OPTIONS

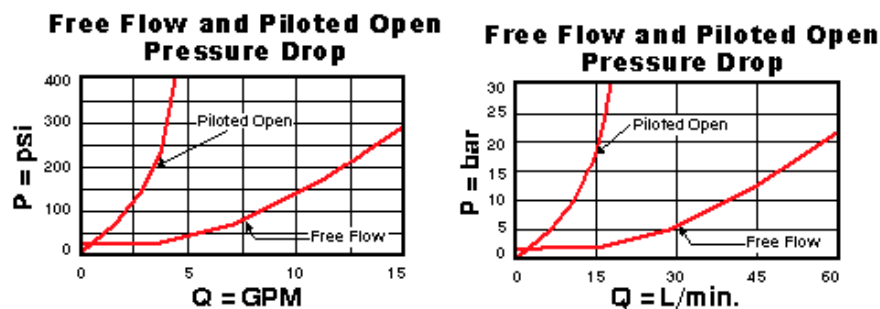
Model Code Example: CBBYLHN

| CONTROL | (L) FUNCTIONAL SETTING RANGE (H) | SEAL MATERIAL | (N) MATERIAL/COATING |
|---|--|---------------------|---|
| L Standard Screw Adjustment C Tamper Resistant - Factory Set | H 1000 - 4000 psi w/25 psi Check (70 - 280 bar w/ 1,7 bar Check), 3000 psi (210 bar) Standard Setting A 1000 - 4000 psi w/4 psi Check (70 - 280 bar w/ 0,3 bar Check), 3000 psi (210 bar) Standard Setting B 400 - 1500 psi w/4 psi Check (28 - 105 bar w/ 0,3 bar Check), 1000 psi (70 bar) Standard Setting I 400 - 1500 psi w/25 psi Check (28 - 105 bar w/ 1,7 bar Check), 1000 psi (70 bar) Standard Setting | N Buna-N V Viton | Standard Material/Coating /AP Stainless Steel, Passivated /LH Mild Steel, Zinc-Nickel |

TECHNICAL FEATURES

- Counterbalance valves should be set at least 1.3 times the maximum load induced pressure.
- Restrictive valves have no relief capacity other than as a thermal relief.
- Turn adjustment clockwise to decrease setting and release load.
- Full clockwise setting is less than 200 psi (14 bar).
- Backpressure at port 2 adds to the effective relief setting at a ratio of 1 plus the pilot ratio times the backpressure.
- Reseat exceeds 85% of set pressure when the valve is standard set. Settings lower than the standard set pressure may result in lower reseal percentages.
- All 3-port counterbalance, load control, and pilot-to-open check cartridges are physically interchangeable (i.e. same flow path, same cavity for a given frame size).
- Sun counterbalance cartridges can be installed directly into a cavity machined in an actuator housing for added protection and improved stiffness in the circuit.
- Two check valve cracking pressures are available. Use the 25 psi (1,7 bar) check unless actuator cavitation is a concern.
- This valve uses orifices to lower the pilot ratio and therefore will pass up to 40 in³/min./1000 psi (0,7 L/min./70 bar) between port 2 and port 3. This is a consideration in master-slave circuits and in the leak testing of valve-cylinder assemblies.
- Corrosion-resistant cartridge valves are intended for use in corrosive environments and are identified by the model code suffix /AP for external stainless steel components, or /LH for external zinc-nickel plated components. See the CONFIGURATION section for all options. For further details, please see the Materials of Construction page located under TECH RESOURCES.
- Incorporates the Sun floating style construction to minimize the possibility of internal parts binding due to excessive installation torque and/or cavity/cartridge machining variations.

PERFORMANCE CURVES



RELATED MODELS

- [CBBYX](#) Fixed setting, 2:1 pilot ratio, restrictive counterbalance valve