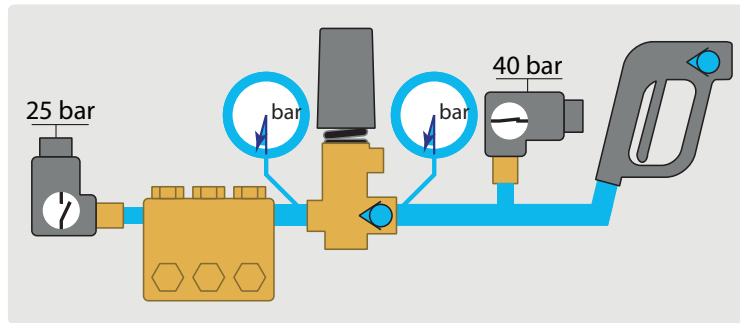


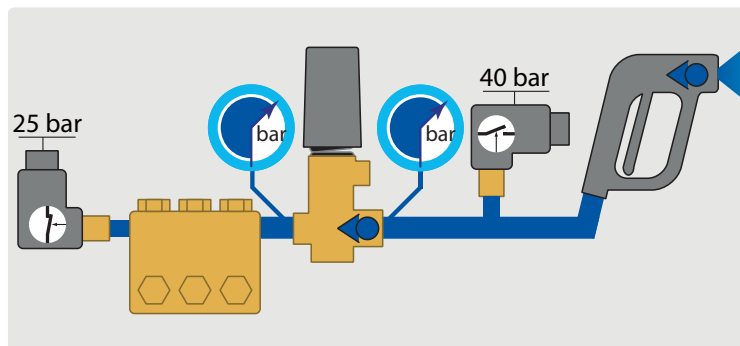
Example of use with two pressure switches

1 - Starting phase



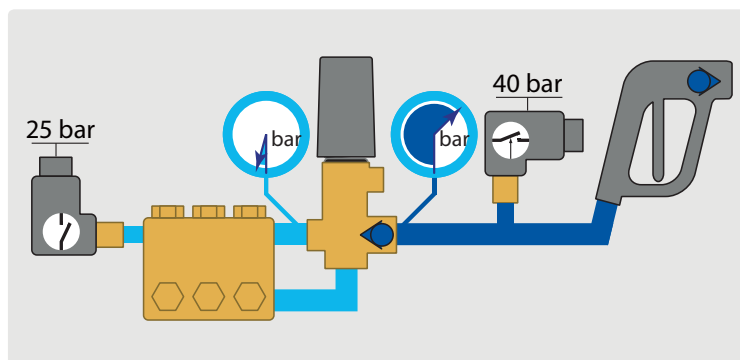
Contact of pressure switch (40 bar) is activated and by this way the cleaner can be started.

2 - High pressure phase



Reaching 25 bar the pressure switch (25 bar) changes the operating condition and secures the operation of the cleaner while pressure switch (40 bar) is deactivated.

3 - Stop phase



During the bypass phase water circulates in the pump without pressure.

The pressure switch (25 bar) opens and the cleaner stops. At the same time there is still high pressure between the regulation valve and the gun.

The high pressure cleaner starts again when operating the gun.