

# Electric valve

## E11N-23

Solenoid valve 2 ways 2 positions, poppet pilot operated, normally open.



### Description

Electric cartridge valve on/off designed to hold the load or block flow at high pressure application where low leakage is request.

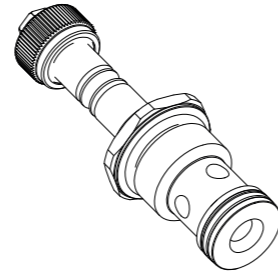
### Operation mode

COIL NOT POWERED: the valve allows flow in both directions. From 2 to 1 and from 1 to 2.

COIL POWERED: the valve in close position block the flow from 2 to 1.

### GENERAL DATA

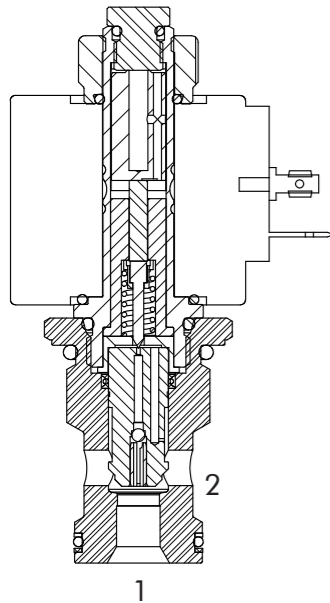
Weight without coil: 0,22 Kg (0,49 lbs).  
Ambient temperature range: -30 C° a 60 C° with standard seals (NBR).  
Max. proof pressure: 420 bar (6.090 psi).  
Flow Max: 70 l/min (18,7 gpm).  
Cartridge materials: high strength steel, internal parts hardened and grinding.



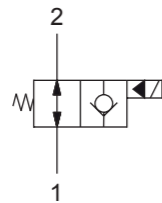
TECHNICAL DATA	
<b>HYDRAULIC</b>	
<b>Max. working pressure:</b>	350 bar (5.075 psi)
<b>Flow rate:</b>	min 2 l/min (0,5 gpm) max 70 l/min (18,7 gpm)
<b>Fluid:</b>	Mineral based oil
<b>Viscosity:</b>	Da 15cSt a 250 cSt
<b>Leakage:</b>	0,25 cc/min (5 drops/min) P max. 350 bar (5.075 psi)
<b>Standard seals:</b>	O-ring NBR Back up ring PTFE
<b>Cavity:</b>	GCZ1120
<b>Installation torque:</b>	60 N/m
<b>Coil nut torque:</b>	2 N/m
<b>Filtration:</b>	NAS 8 ISO 4406 19/17/14
<b>Fluid temperature range:</b>	From -20 to +80 C°
<b>Fatigue cycle life:</b>	1.000.000 cycle at 350 bar
<b>Seal kit std.:</b>	K112N00
<b>ELECTRIC</b>	
<b>Type of voltage:</b>	DC
<b>Insulation index:</b>	H
<b>Nominal voltage:</b>	+/- 10 %
<b>Power at 20 C°:</b>	22 W
<b>ED*:</b>	100% with ambient temperature range -20 C° +40 C°
<b>Coil code:</b> (see page 4.001)	S30

\*Note: For temperature or special conditions contact our sales office.

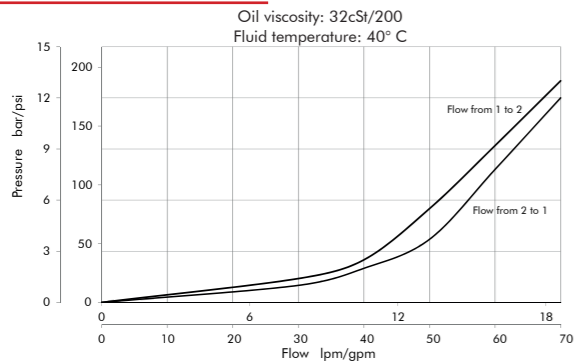
### Drawing



### Hydraulic symbol

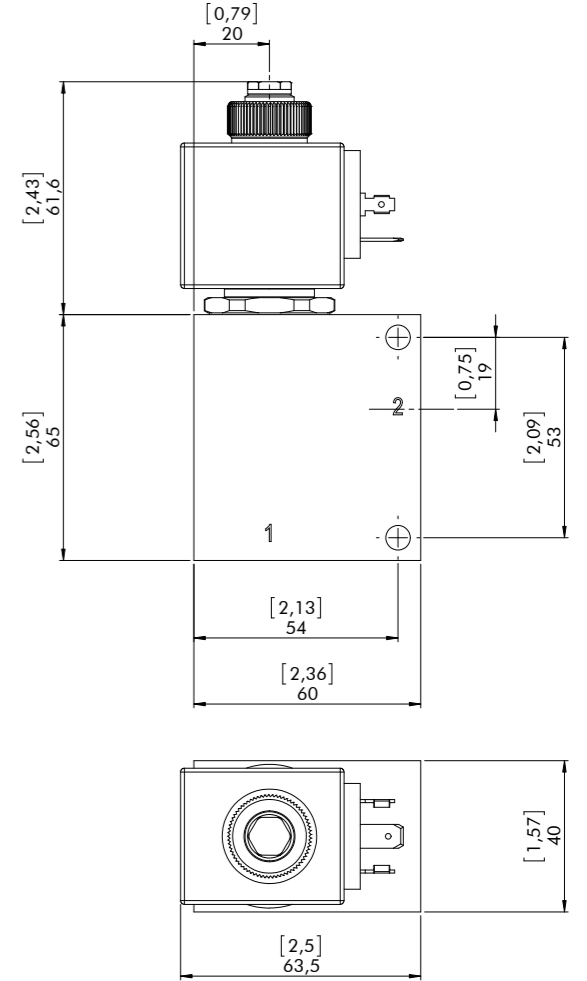
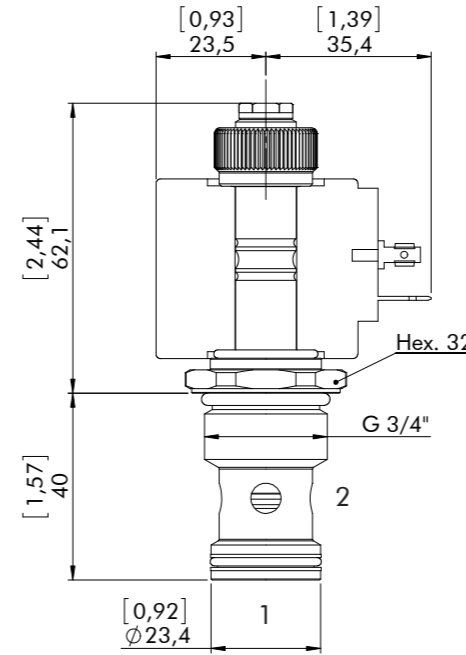


### Performance graphs



# Dimensions

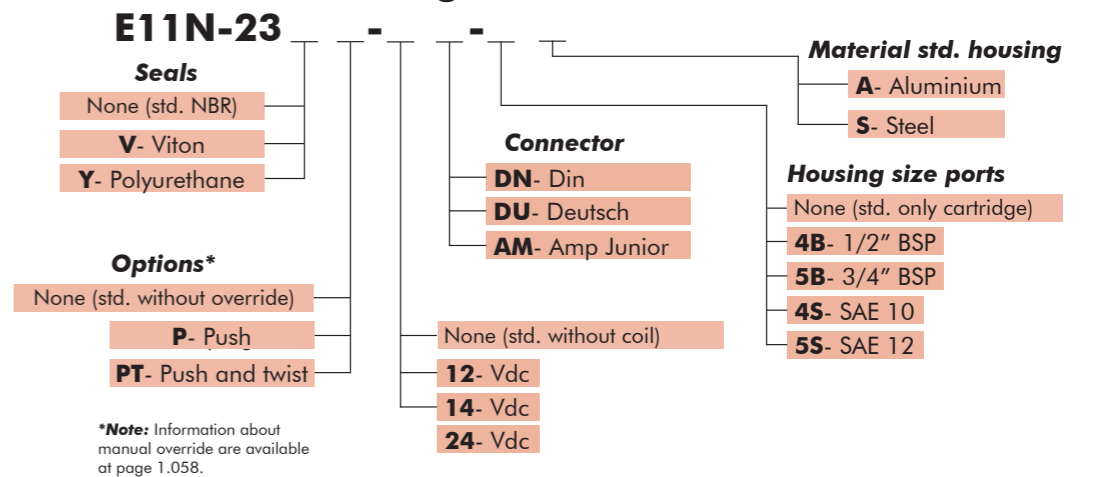
Inches  
Millimeters



STANDARD HOUSING	
<b>Ordering code:</b>	See page 5.006
<b>Material*:</b>	Aluminium/Steel Max working pressure for aluminum body: 210 bar Max working pressure for steel body: 350 bar

\*Note: To correctly select the material, in relation to application, see page 001.

### Ordering code



\*Note: Information about manual override are available at page 1.058.