

**DESCRIPTION**

Solenoid valve 2 way normally open with servoassisted diaphragm

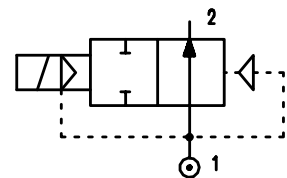
**COSNTRUCTION**

Body and cover	Brass
Armature tube	Stainless steel
Plunger and core	Stainless steel
Springs	Stainless steel
Seal	NBR FPM EPDM

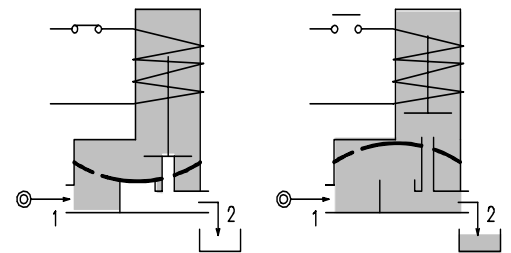


**FEATURES**

- Minimum differential pressure 0.15 bar
- Maximum allowable pressure\* : 25 bar
- Maximum fluid viscosity 25cSt (mm<sup>2</sup>/s)
- Ambient temperature: with class F coil -10°C +55°C  
with class H coil -10°C +80°C
- Preferred mounting position with vertical coil above



4



**OPTIONS:** Electroless nickel plating  
Explosion proof coil according to ATEX - EExmII Series 7

CODE ① ②	Connection G ISO 228	Orifice mm	KV m <sup>3</sup> /h	Differential pressure bar			Nominal power			Coil		Seal ①	Temp. range °C
				Min	Max		AC Inrush	VA Holding	DC Watt	Series	Width		
					AC	DC							
E207B.....10///.....	1/4"	10	1.5	0.15	15	15	12	8	6.5	3	22	NBR=B EPDM=E FPM=V	-10 +90 <+140 -10 +130
E207C.....10///.....	3/8"	10	1.7	0.15	15	15							
E207C.....12///.....	3/8"	12	2.2	0.15	15	15							
E207D.....12///.....	1/2"	12	2.5	0.15	15	15							
E207E.....18///.....	3/4"	18	5.5	0.15	13	13							
E207F.....25///.....	1"	24	10.2	0.15	10	10							
E207G.....30///.....	1"1/4	30	15	0.15	10	10							

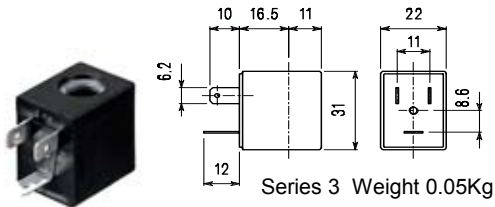
① Seal Example: E207DB12///301 NBR seal  
② Coil Coil 24V DC

\* REMARK: The maximum allowable pressure PS for steam is 2,5bar (gauge pressure)

COILS	Alternating Current ~50/60Hz Volt							Direct Current Volt			Electrical connection	Connectors
	12	24	48	110	220 230	240	380	12	24	48		
Series 3 Width 22 Code ②	30A	30B	30C	30D	30E	30F	30G	300	301	302	DIN 46244	PG9 code 10348000

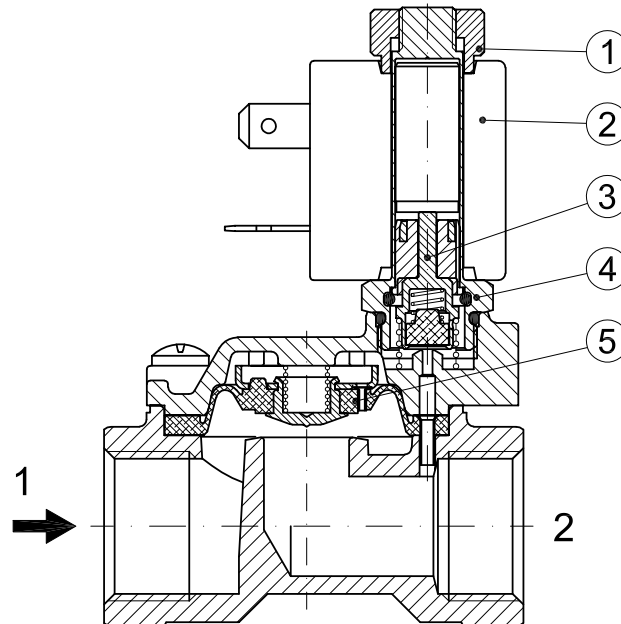
**DESCRIPTION**  
 Class F insulation  
 Voltage tolerance  
 AC +15% -10%  
 DC ± 10%  
 Protection class  
 IP65 with connector fitted  
 IP00 without connector  
 Continuous service ED100%

**OPTIONS**  
 Class H insulation  
 Cable attached  
 Special coil voltage  
 Special coil powers

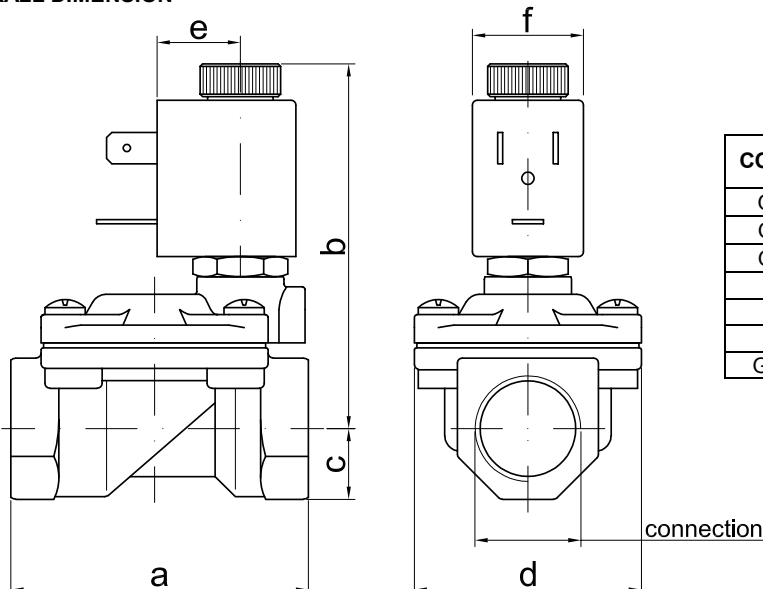


### SPARE PARTS LIST

1. Coil fixing nut
2. Coil
3. Seal assembly
4. Armature tube with core
5. Diaphragm assembly



### OVERALL DIMENSION



CONNECTION	a	b	c	d	e	f	Weight Kg
G1/4" Ø10	49	64	11	32	16	22	0.25
G3/8" Ø10	49	64	11	32	16	22	0.25
G3/8" Ø12	59	73	14	45	16	22	0.45
G1/2"	59	73	14	45	16	22	0.45
G3/4"	79	75	18	55	16	22	0.66
G1"	96	85	20	72	16	22	1.05
G1 1/4 Ø30	119	96	25	85	16	22	1.80

**DESCRIPTION**

Solenoid valve 2 way normally open with servo-assisted diaphragm

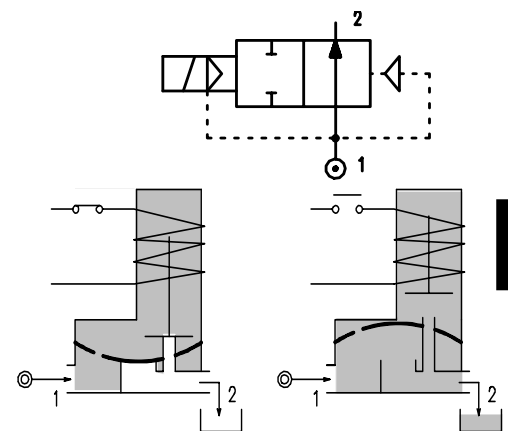
**CONSTRUCTION**

Body and cover	Brass
Armature tube	Stainless steel
Plunger and core	Stainless steel
Springs	Stainless steel
Seal	NBR FPM EPDM



**FEATURES**

- Minimum differential pressure 0.15÷3 bar
- Maximum allowable pressure\* : 20 bar
- Maximum fluid viscosity 25cSt (mm<sup>2</sup>/s)
- Ambient temperature: with class F coil -10°C +55°C  
with class H coil -10°C +80°C
- Preferred mounting position with vertical coil above



**OPTIONS:** Electroless nickel plating  
Stainless steel armature tube

CODE ① ②	Connection G ISO 228	Orifice mm	KV m <sup>3</sup> /h	Differential pressure bar			Nominal power			Coil		Seal ①	Temp. range °C
				Min	Max		AC Inrush	VA Holding	DC Watt	Series	Width		
					AC	DC							
E207G.....37///.....	1"1/4	37	18	0.15	10	10	20	15	10	2	30	NBR=B	-10 +90
E207H.....37///.....	1"1/2	37	21	0.15	10	10						EPDM=E	<+140
E207I.....50///.....	2"	50	36	0.15	10	10						FPM=V	-10 +130
E207MB75///.....	2"1/2	75	75	0.3	5	5	20	15	10	2	30	NBR=B	-10 +90
E207RB75///.....	3"	75	84	0.3	5	5							
③ E207MB75/W/...	2"1/2	75	75	3	15	15	40	30	27	5	36		
③ E207RB75/W/...	3"	75	84	3	15	15							

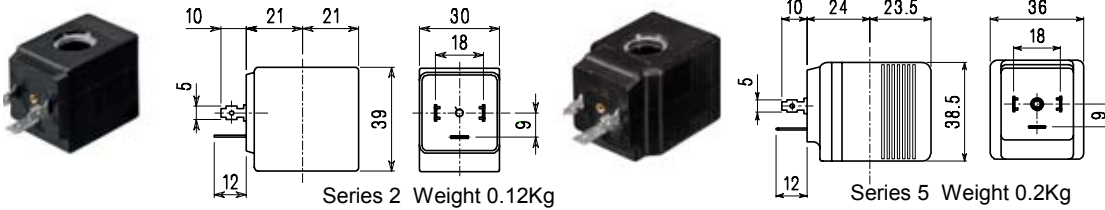
- ① Seal
  - ② Coil
  - ③ Reinforced diaphragm
- Example: E207IB50///201 NBR seal  
Coil 24V DC

\* REMARK: The maximum allowable pressure PS for steam is 2,5bar (gauge pressure)

COILS	Alternating Current ~50/60Hz Volt							Direct Current Volt			Electrical connection	Connectors
	12	24	48	110	220 230	240	380	12	24	48		
Series <b>2</b> Width 30 Code ②	20A	20B	20C	20D	20E	20F	20G	200	201	202	DIN 43650A	PG9 code 10349000
Series <b>5</b> Width 36 Code ②	52A	52B	52C	52D	52E	52F	52G	520	521	522	DIN 43650A	PG11 code 10349001

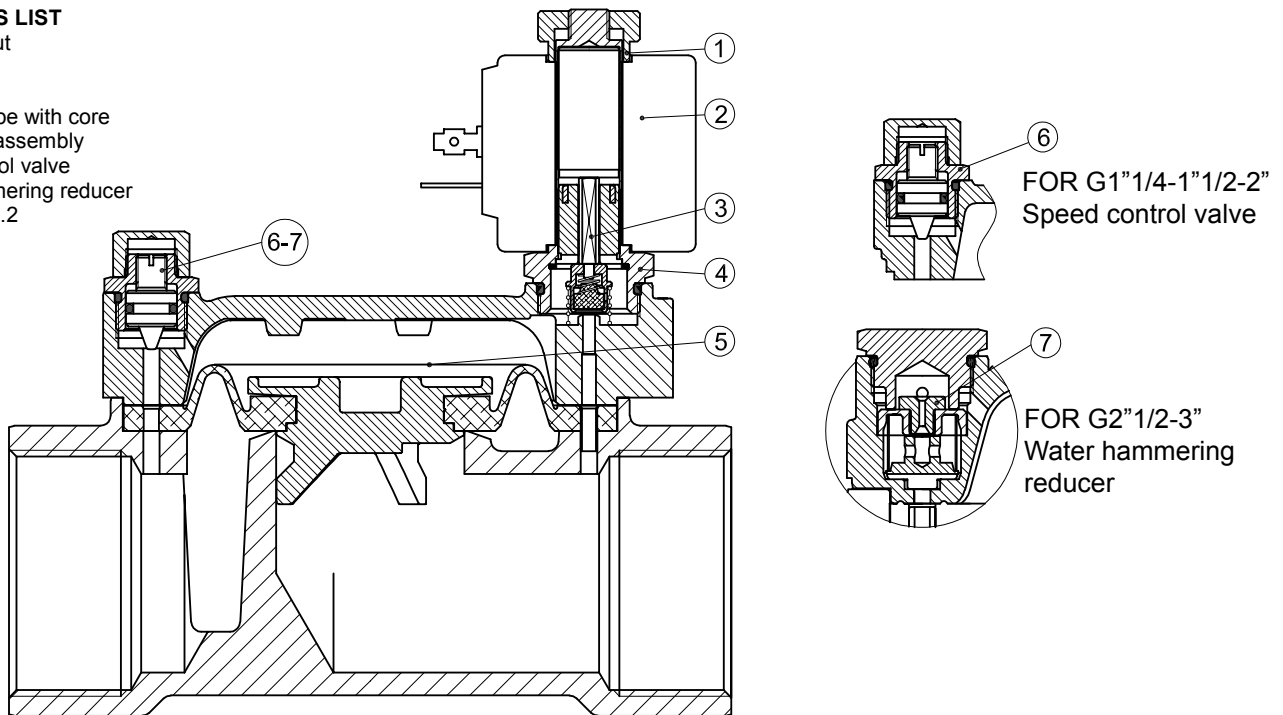
**DESCRIPTION**  
 Insulation class  
 Series 2=F Series 5=H  
 Voltage tolerance  
 AC +15% -10%  
 DC ± 10%  
 Protection class  
 IP65 with connector fitted  
 IP00 without connector  
 Continuous service ED100%

**OPTIONS**  
 Class H insulation (series 2)  
 Cable attached  
 Special coil voltages  
 Special coil powers



### SPARE PARTS LIST

1. Coil fixing nut
2. Coil
3. Plunger
4. Armature tube with core
5. Diaphragm assembly
6. Speed control valve
7. Water hammering reducer  
 $\varnothing 0.8-\varnothing 1-\varnothing 1.2$



### OVERALL DIMENSION

