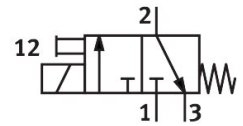
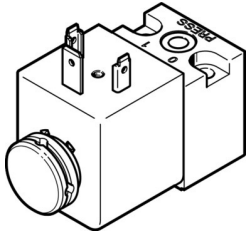



Pilot valve MDH-3/2-230VAC

Part number: 119602

FESTO



 General operating condition

Data sheet

Feature	Value
Valve function	3/2-way, closed, monostable
Type of actuation	Electric
Construction width	30 mm
Standard nominal flow rate (standardised to DIN 1343)	50 l/min
pneumatic working port	Sub-base size 30 mm to ISO 15218
Operating voltage	110V DC 230V AC
Operating pressure	0.1 MPa ... 1.6 MPa
Operating pressure	1 bar ... 16 bar
Operating pressure	14.5 psi ... 232 psi
Design	Poppet seat
Type of reset	Mechanical spring
CE mark (see declaration of conformity)	To EU Low Voltage Directive
UKCA marking (see declaration of conformity)	To UK regulations for electrical equipment
Degree of protection	IP65
Nominal size	1.3 mm
Grid dimension	42 mm
Exhaust-air function	Without flow control option
Based on standard	ISO 15218
Sealing principle	Soft
Mounting position	optional
Conforms to standard	ISO 15218
Manual override	Non-detenting
Type of piloting	Direct
Flow direction	Non-reversible
Symbol	00991308
lap	Underlap
Switching time off	9 ms
Switching time on	11 ms
Duty cycle	100%
Characteristic coil data	110 V DC: 6.3 W 230 V AC: 50 Hz, pick-up power 14.5 VA, holding power 10.5 VA 230 V AC: 60 Hz, pick-up power 12.0 VA, holding power 7.6 VA
Permissible frequency fluctuations	+/- 10%
Permissible voltage fluctuations	+/- 10 %
Operating medium	Compressed air to ISO 8573-1:2010 [7:4:4]

Feature	Value
Note on operating and pilot medium	Lubricated operation possible (in which case lubricated operation will always be required)
Corrosion resistance class CRC	2 - Moderate corrosion stress
LABS (PWIS) conformity	VDMA24364-B2-L
Media temperature	-15 °C ... 80 °C
Ambient temperature	-15 °C ... 50 °C
Product weight	140 g
Electrical connection	To DIN EN 175301-803
Type of mounting	On sub-base With through-hole
Pneumatic connection, port 1	Sub-base
Pneumatic connection, port 2	Sub-base
Pneumatic connection, port 3	Not ducted
Note on materials	RoHS-compliant
Material seals	FPM