

# PRESA DI FORZA A COMANDO PNEUMATICO

## PNEUMATIC CLUTCH POWER TAKE-OFF

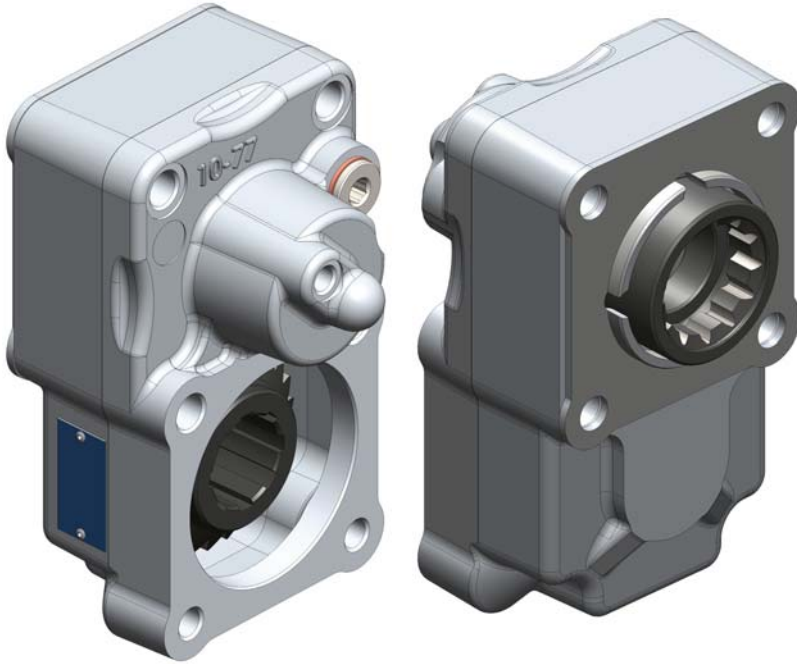
**CODICE PTO**  
PTO CODE

**10-77-178**

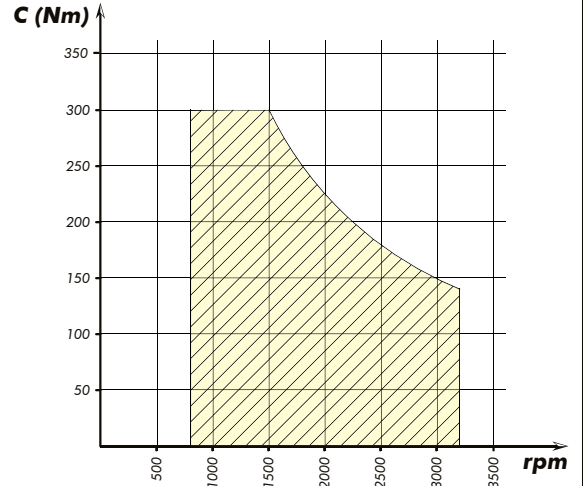
**CAMBIO**  
GEARBOX

**ZF**

Codice foglio: 997-210-07717 Rev://



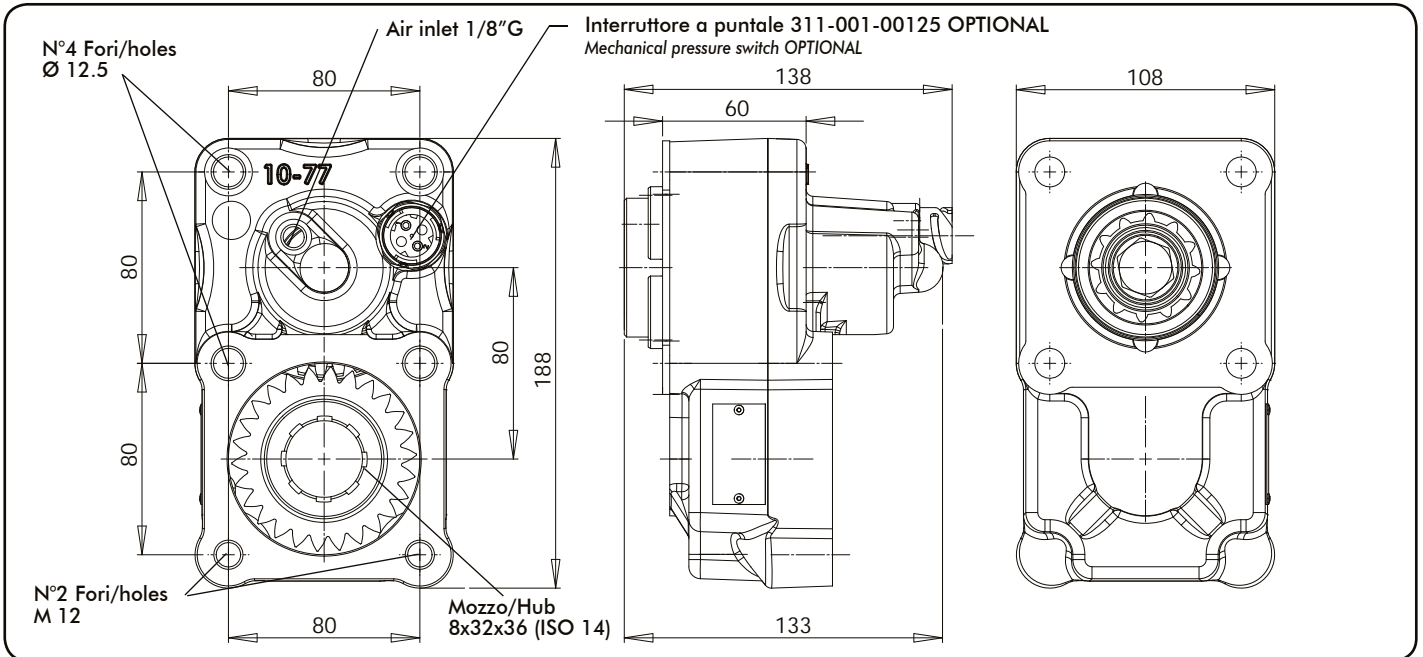
### DIAGRAMMA DI UTILIZZO WORKING CONDITION



Rev://

Codice fascicolo:

Data: Mercoledì 14 ottobre 2009



Tipo cambio Gearbox	Codice PTO PTO code	Versione Version	Giri pto a 1000 giri motore Pto ratio@1000 eng.rpm	Coppia massima Max torque	Lato montaggio Mounting side	Uscita Output	Rotazione Rotation	Kit di montaggio Mounting kit	Peso Weight
Vedi indice See index	<b>10-77-00178</b>	<b>817</b>	Vedi indice See index	<b>300</b>	Poster. Rear	Poster. Rear	Ant. Acw	Vedi indice See index	Kg 4,3

Rapporto interno / Internal ratio = 1:1.35



pag.1  
O.M.F.B. S.p.A. Hydraulic Components  
We reserve the right to make any changes without notice.  
Edition 2009.10 No reproduction, however partial, is permitted.  
Via Cave, 7/9 25050 Provaglia d'Iseo (Brescia) Italy Tel.: +39.030.9830611  
Fax: +39.030.9839207-208 Internet:www.omfb.it e-mail:info@omfb.it

COMPANY WITH  
QUALITY SYSTEM  
CERTIFIED BY DNV GL  
= ISO 9001 =