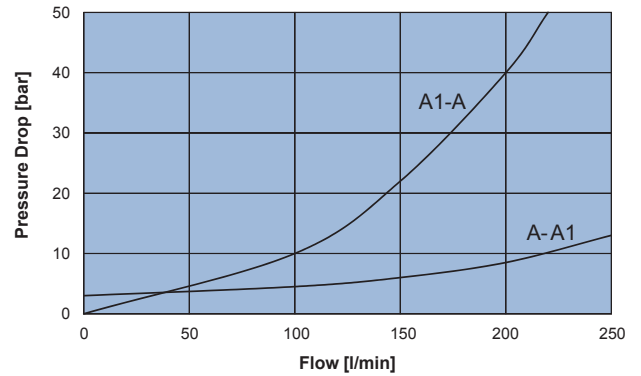
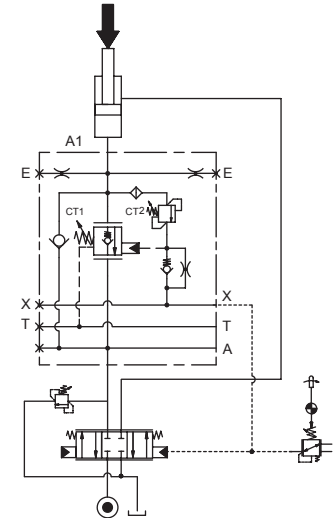
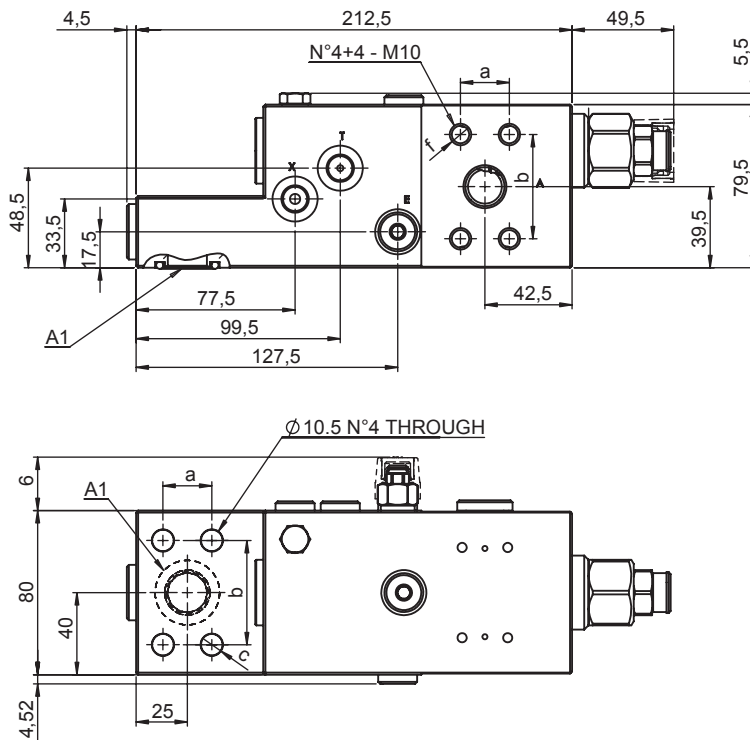


LOAD LOWERING CONTROL VALVE - SAE FLANGED 3/4"-SAE6000

- Max flow. **250 l/min**
- Max working pressure **410 bar**
- Compensation. **Fully Compensated with drain line**
- Weight **8 Kg**
- Tamper proof cap CT1. **cod.9021030191**
- Tamper proof cap CT2 **cod.9021015101**



Flange	a	b	c	f	O-Ring
3/4"- SAE 6000	23.8	50.8	10.5	M 10	23.39x3.53 NBR 70°SH

Ordering code

Y 1 5 1 3 Y **0 0**

<table border="1" style="width: 100%; border-collapse: collapse;"> <thead> <tr> <th colspan="2">PILOT RATIO</th> </tr> </thead> <tbody> <tr> <td style="text-align: center;">11</td> <td>1:0 FINE METERING</td> </tr> </tbody> </table>	PILOT RATIO		11	1:0 FINE METERING	<table border="1" style="width: 100%; border-collapse: collapse;"> <thead> <tr> <th colspan="2">PORTS</th> </tr> </thead> <tbody> <tr> <td style="text-align: center;">65</td> <td></td> </tr> <tr> <td>A, A1</td> <td>3/4" - SAE 6000</td> </tr> <tr> <td>T-E-X</td> <td>G 1/4"</td> </tr> </tbody> </table>	PORTS		65		A, A1	3/4" - SAE 6000	T-E-X	G 1/4"																		
PILOT RATIO																															
11	1:0 FINE METERING																														
PORTS																															
65																															
A, A1	3/4" - SAE 6000																														
T-E-X	G 1/4"																														
<table border="1" style="width: 100%; border-collapse: collapse;"> <thead> <tr> <th colspan="3">SPRING CT1</th> </tr> </thead> <tbody> <tr> <td style="text-align: center;">4</td> <td>Setting Range min.-max. [bar]</td> <td>Pressure Increase [bar/turn]</td> </tr> <tr> <td></td> <td>5 - 16</td> <td>4,5</td> </tr> <tr> <td></td> <td></td> <td>Standard Setting @20 cc/min [bar]</td> </tr> <tr> <td></td> <td></td> <td>7,5</td> </tr> </tbody> </table>	SPRING CT1			4	Setting Range min.-max. [bar]	Pressure Increase [bar/turn]		5 - 16	4,5			Standard Setting @20 cc/min [bar]			7,5	<table border="1" style="width: 100%; border-collapse: collapse;"> <thead> <tr> <th colspan="3">SPRING CT2</th> </tr> </thead> <tbody> <tr> <td style="text-align: center;">4</td> <td>Setting Range min.-max. [bar]</td> <td>Pressure Increase [bar/turn]</td> </tr> <tr> <td></td> <td>200 - 410</td> <td>250</td> </tr> <tr> <td></td> <td></td> <td>Standard Setting @4 l/min [bar]</td> </tr> <tr> <td></td> <td></td> <td>350</td> </tr> </tbody> </table>	SPRING CT2			4	Setting Range min.-max. [bar]	Pressure Increase [bar/turn]		200 - 410	250			Standard Setting @4 l/min [bar]			350
SPRING CT1																															
4	Setting Range min.-max. [bar]	Pressure Increase [bar/turn]																													
	5 - 16	4,5																													
		Standard Setting @20 cc/min [bar]																													
		7,5																													
SPRING CT2																															
4	Setting Range min.-max. [bar]	Pressure Increase [bar/turn]																													
	200 - 410	250																													
		Standard Setting @4 l/min [bar]																													
		350																													