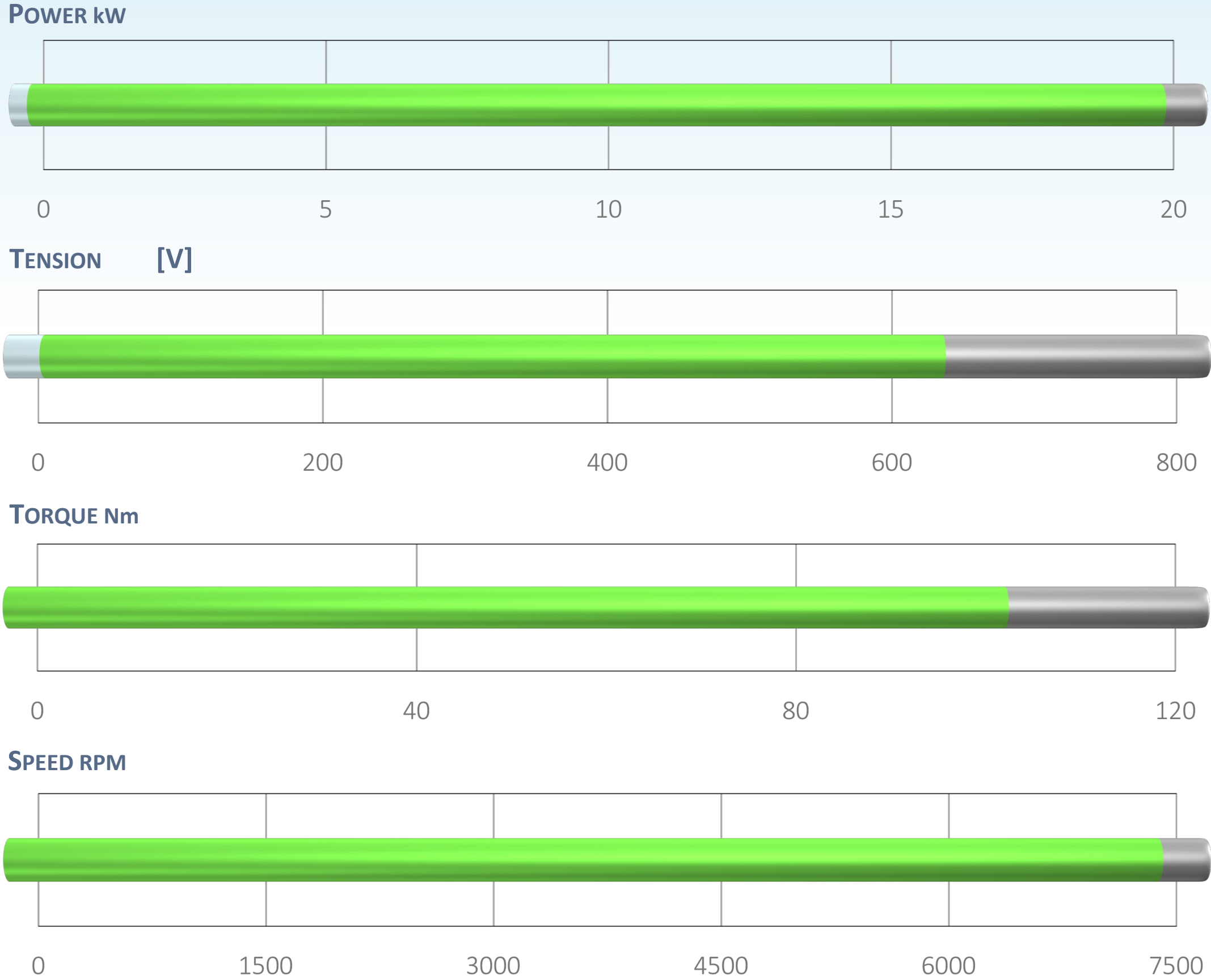
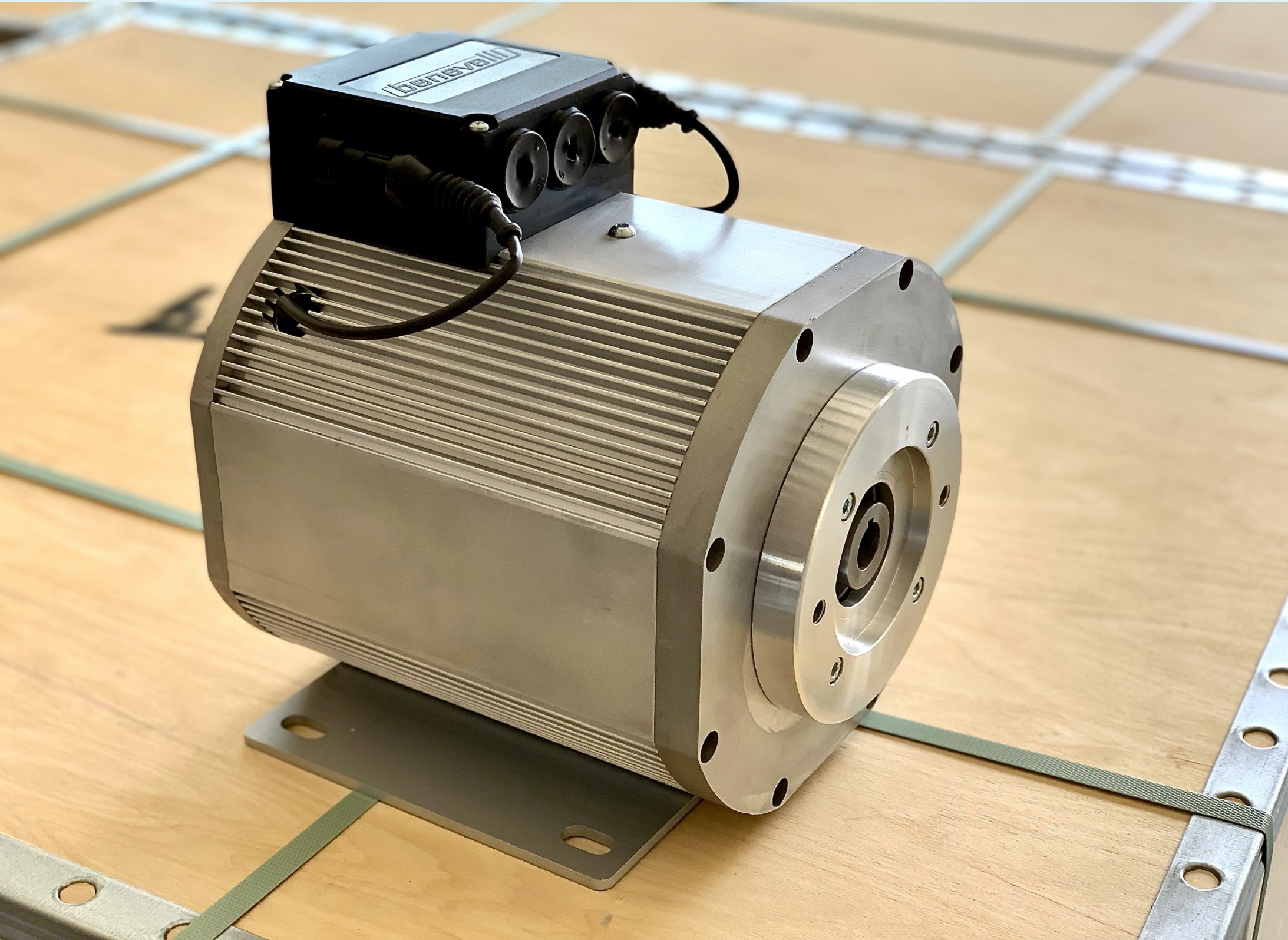




# AMAC SERIE - ASYNCHRONOUS MOTORS AC



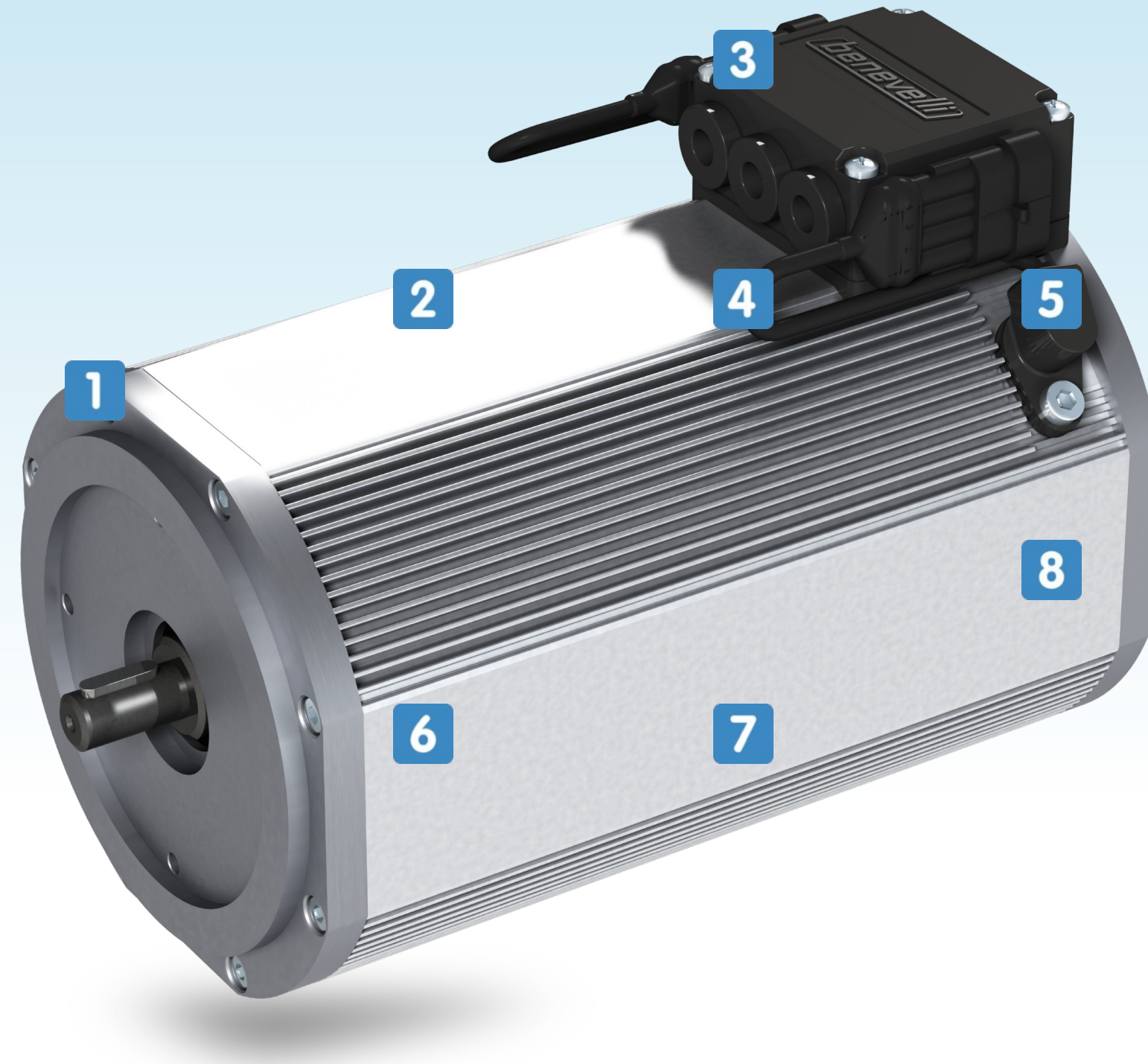
ELECTRIC MOTOR SOLUTIONS FOR ALL VEHICLE CLASSES: SCALABLE AND FLEXIBLE, BENEVELLI MOTORS ARE DESIGNED FOR THE MOST DEMANDING USES. MODULAR SYSTEM ALLOW **AMAC SERIE** CUSTOM DESIGN TAILORED TO YOUR SPECIFIC REQUIREMENTS. **AMAC SERIE** IS THE NEXT GENERATION MOTORS DEVELOPED FOR EMOBILITY MARKET.



DRIVING THE FUTURE OF ELECTRIC VEHICLES



# AMAC SERIE - BENEFIT & FEATURES



**1** SCALABLE DESIGN  
MODULAR DESIGN ALLOWS CONFIGURATION IN  
OVER 100 MODELS OF DIFFERENT SIZES

**2** WATERPROOF  
ULTRA PROTECTED MOTORS THANKS TO SPECIAL  
DESIGN THAT ALLOWS PROTECTION UP TO IP67

**3** TECHNOLOGIES  
MOTORS DESIGNED TO PROVIDE THE HIGHEST  
POWER AND TORQUE AVAILABLE IN THEIR SIZE

**4** MOUNTING  
EASY TO INSTALL THANKS TO THE FOUR SQUARE  
SURFACES AND OPTIONAL FOOT

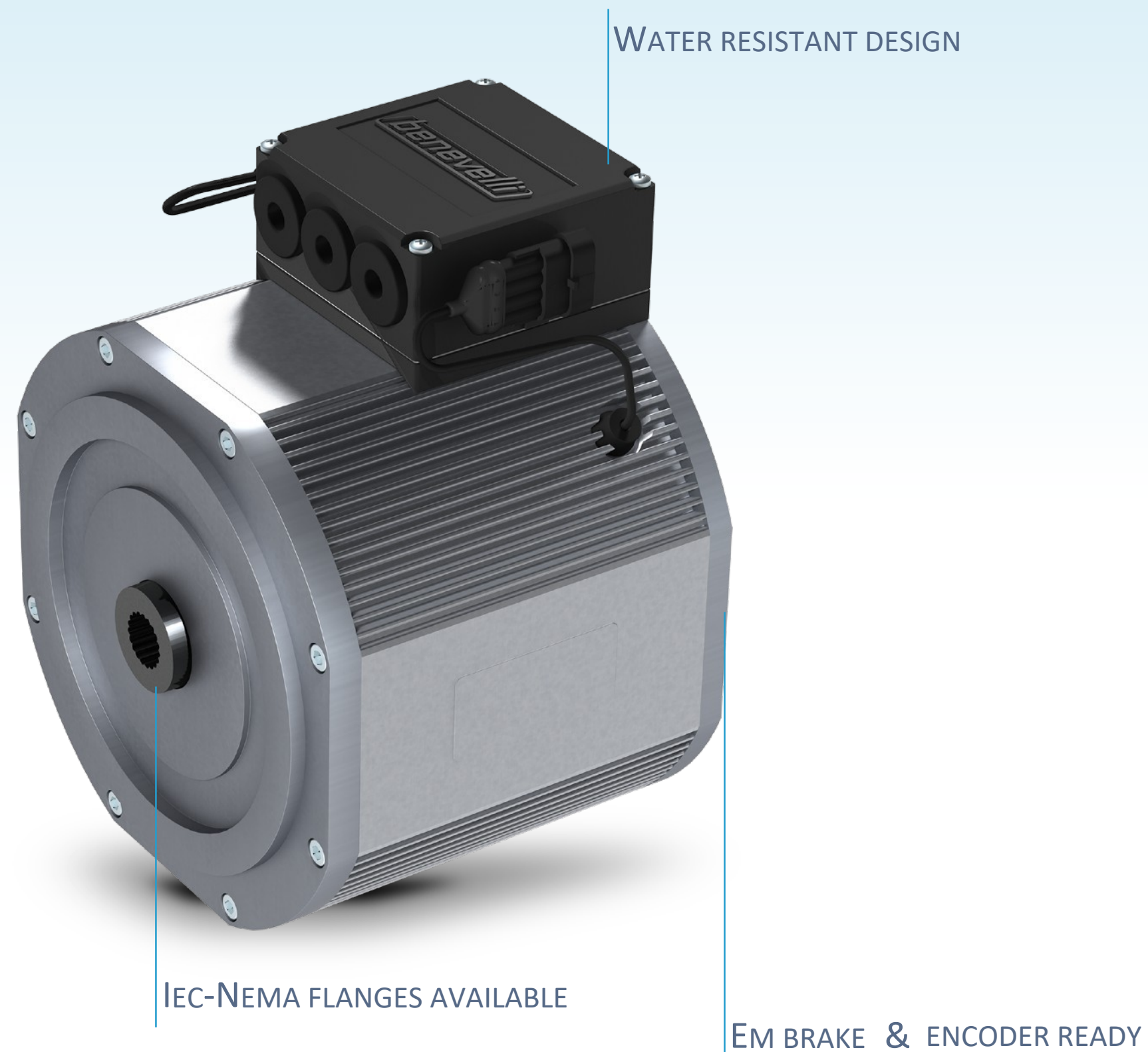
**5** SENSORS  
AVAILABLE WITH STANDARD TEMPERATURE AND  
SPEED SENSORS, SPECIAL SENSORS ON DEMAND

**6** TEST  
PERFORMANCE TEST AND EMC CERTIFICATION  
PERFORMED IN ACCREDITED INSTITUTES

**7** LIGHTWEIGHT  
ENGINEERED FOR SIGNIFICANTLY WEIGHT  
REDUCTION THAN CONVENTIONAL MOTORS

**8** EFFICIENCY  
DESIGNED THANKS SOFTWARE AND WITH  
MATERIALS THAT ALLOWS MAXIMUM EFFICIENCY

DRIVING THE FUTURE OF ELECTRIC VEHICLES



MOTOR FEATURES		
MOTOR TYPE		ASYNCHRONOUS
RATED POWER	kW	3,00
PEAK POWER	kW	5,50
RATED VOLTAGE	V	24 ÷ 600
OPERATING MODE	S2	60MIN
RATED SPEED	RPM	2450
POLES	N	4
PROTECTION DEGREE	IP	54 ÷ 67
INSULATION CLASS		F (155°)
CONNECTION		DELTA
THERMAL PROTECTION		KTY 84-130
SPEED SENSOR		64 PULSE
INCREM. ENCODER		OPTIONAL
PARKING BRAKING		ELECTROMAGNETIC - Nm 40 ÷ 100
MANUAL RELEASE		OPTIONAL
ATEX EXECUTING		OPTIONAL
CE CERTIFICATION		COMPATIBLE
EMC DIRECTIVE		COMPATIBLE
ROHS DIRECTIVE		COMPATIBLE
UL CERTIFICATION		COMPATIBLE

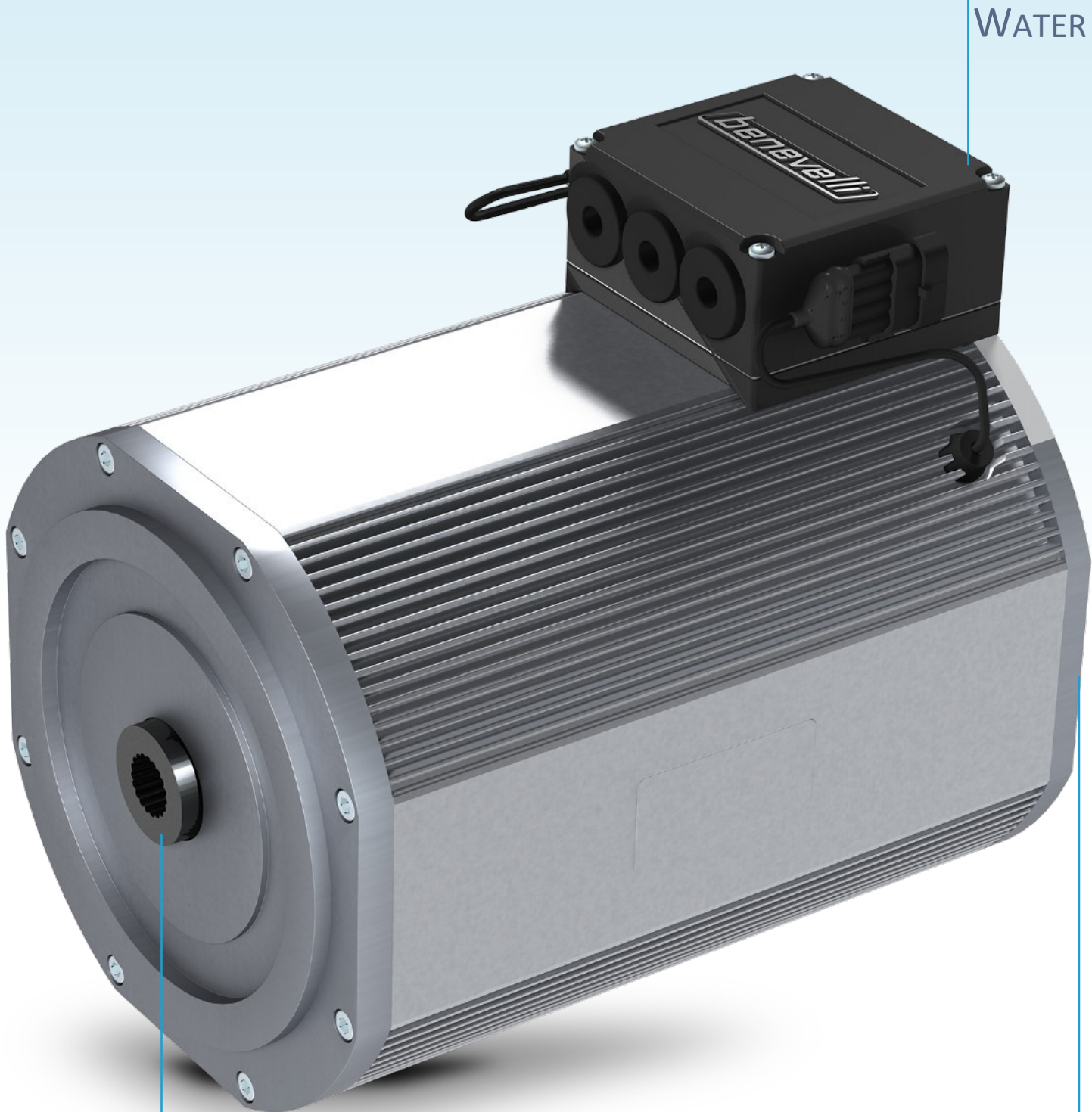


TECHNICAL SUPPORT



REQUEST A QUOTE





WATER RESISTANT DESIGN

IEC-NEMA FLANGES AVAILABLE

EM BRAKE & ENCODER READY

## MOTOR FEATURES

MOTOR TYPE		ASYNCHRONOUS
RATED POWER	kW	10,00
PEAK POWER	kW	18,00
RATED VOLTAGE	V	24 ÷ 600
OPERATING MODE	S2	60MIN
RATED SPEED	RPM	2450
POLES	N	4
PROTECTION DEGREE	IP	54 ÷ 67
INSULATION CLASS		F (155°)
CONNECTION		DELTA
THERMAL PROTECTION		KTY 84-130
SPEED SENSOR		64 PULSE
INCREM. ENCODER		OPTIONAL
PARKING BRAKING		ELECTROMAGNETIC - Nm 40 ÷ 100
MANUAL RELEASE		OPTIONAL
ATEX EXECUTING		OPTIONAL
CE CERTIFICATION		COMPATIBLE
EMC DIRECTIVE		COMPATIBLE
ROHS DIRECTIVE		COMPATIBLE
UL CERTIFICATION		COMPATIBLE



TECHNICAL SUPPORT



REQUEST A QUOTE